



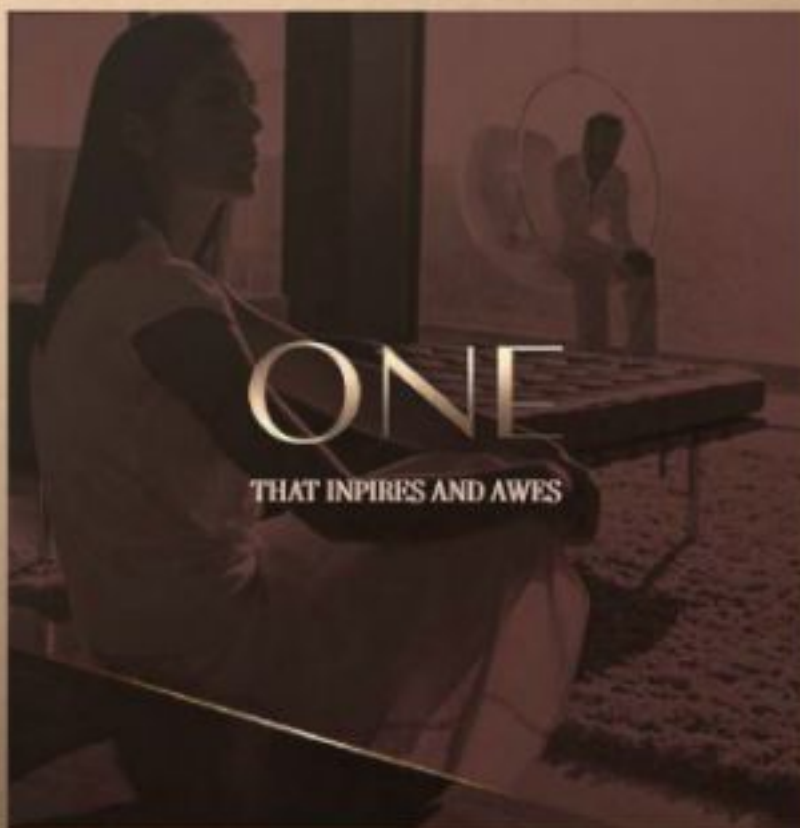
SOBHA ONE

SOBHA
SPACE

ONE

THE JOURNEY BEGINS

ONE that brings you
closer to nature



A place where you can take
one day at a time



ONE

BE ONESELF

It's one of a kind, like you



One where the world is
close yet far away

THE POWER OF ONE



*When imagination and vision
come together Life meets style.*

City and nature hum together,
Work & play find a balance and become One

ONE WAY: YOUR WAY

The best places are hidden in plain sight

Near the vital Ras Al Khor Road, Sobha One is a little world tucked away. Look to the north at the calming waters of the Creek as they look back. Farther north is the skyline with panoramic views of The Burj Khalifa, Creek Tower to the Northeast and Downtown to the West.



ARRIVE & DEPART WITH GRACE

Sobha One is right near two new interchanges on Ras Al Khor Road. So, getting home has never been faster. With exits in both the West and East, a new planned metro line behind Sobha One, soar where you need to be on your terms.





LIVING BY THE WATER

Imagine waking up each morning next to serene water. The sun glints off the water, casting a sparkling path across the ripples. A light breeze blows, rustling the leaves of the nearby trees.

It's yours to stroll down the pathway or sit peacefully watching the calm waters. Go on, spend lazy weekends lounging near the water, reading, and soaking up the sun.



ONE POINT OF VIEW: YOURS

With a canvas spread over 1.5 million square feet, its breathtaking views as far as your eye can see. Look around to views of Golf Course, calm water, iconic Burj Khalifa & Downtown. Every glance sets a different mood.



ONE

SPACE

Sobha One spreads its tapestry over five interlinked towers. Rising from 30 stories tall and hitting a crescendo of 65 stories, it's one note after another that sings in chorus with the skyline

With 1 to 4 bedroom apartments & 2 to 4 bedroom Duplex,
it's a world of its own.



ONE FOR ALL,
ALL FOR ONE



*Life is too short to settle for anything less than
the best. At Sobha One, luxury living is a
natural choice.*

TEE OFF IN STYLE

The first of its kind in Dubai, a world class Pitch and Putt golf course featuring 18 holes of golf, each meticulously designed.

It is the perfect way to unwind after a long day at work. After all, there's nothing like sinking a long putt on a sun-drenched fairway. The clubhouse is appointed with upscale amenities and a patio overlooking the greens.



DINE BY THE WATERS

The food & beverage esplanade that borders the calm waters is also a feast for the palate to suit every taste and time.

Spread over almost half a kilometer, it offers fine restaurants for an intimate dinner, quick catch-up over a cup of coffee, or a power lunch.



SKY GARDEN

Rise high above and look at the stars. Soak in the stunning views of the city. Catch the sun rays when they rise and set. Do it all from the magnificent panoramic sky terrace in each tower



COURTYARD FOR THE SENSES



All the 5 Towers at Sobha One have interconnected four themed courtyards. As private outdoor retreats, these lush, landscaped spaces add to the overall aesthetic.

RELAX

In a fast-paced world, finding ways to relax is more important than ever. Take a leisurely stroll through the tree avenues, do yoga on the group decks, or stroll in the gardens. And when you need to refuel, enjoy a meal at the BBQ & dining areas or catch a movie under the stars on our cinema screen. There is something for everyone





REMEMBER

The family courtyard is a great way to spend quality time together. You can pack a picnic lunch and enjoy the beautiful weather. Or spending a day cooling off in the water, splashing with the little ones. So, come on down and make memories with your loved ones!





RECHARGE

We believe that fitness should be fun! That's why we've created a unique courtyard that combines the best of gyms with exciting new indoor and outdoor features from static bikes, treadmills, circuit training areas and battle ropes. So sweat it out and be the best version of yourself.





REFRESH

This themed courtyard is the way to do just that after a long day. Step into the pool area, and the stress of daily life melts away. Feel your muscles loosening and your mind clearing as you swim laps. Close your eyes and let the warm sun wash over you, lulling you into a state of relaxation.





SOBHA ONE



FLEXIBLE PAYMENT PLAN

60%

During Construction

40%

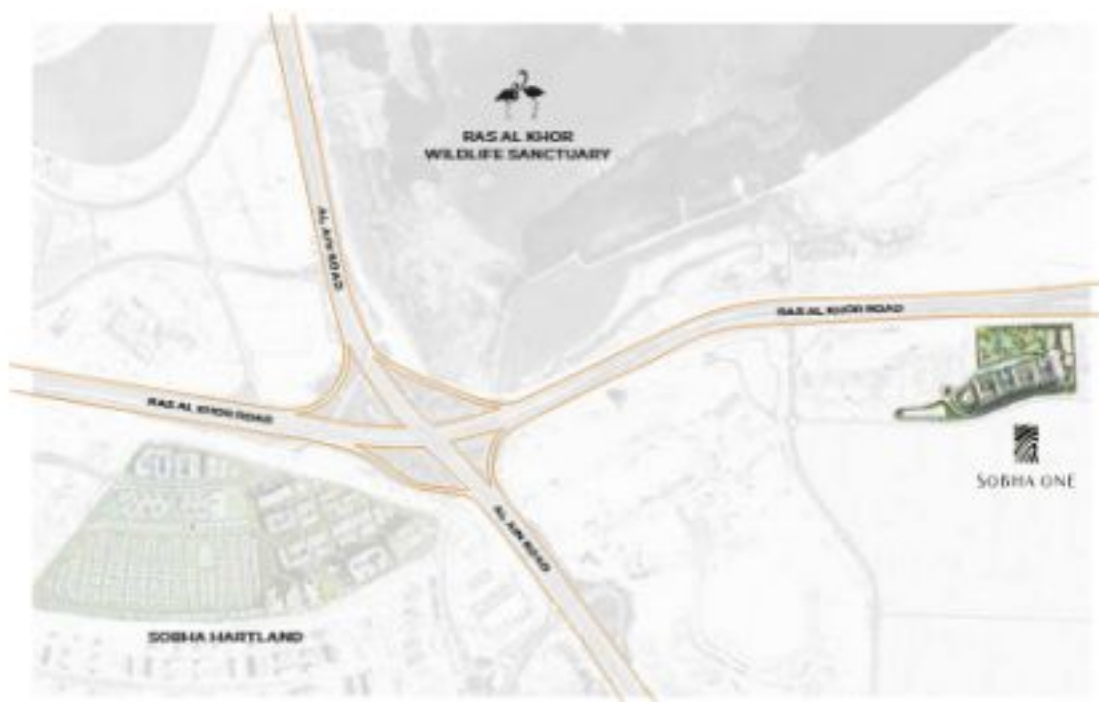
On Completion

**Grand 1 to 4 Bedroom apartments & 2, 3, 4 Bedroom Duplex
starting from AED 1.1 MN***

ONE

awaits you...

LOCATION MAP



MASTER PLAN

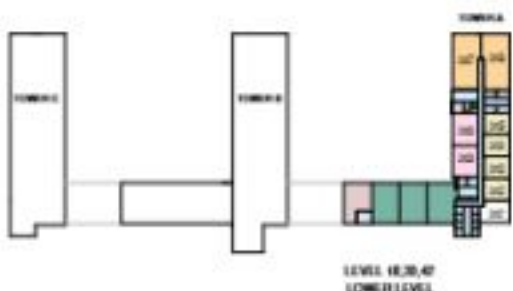
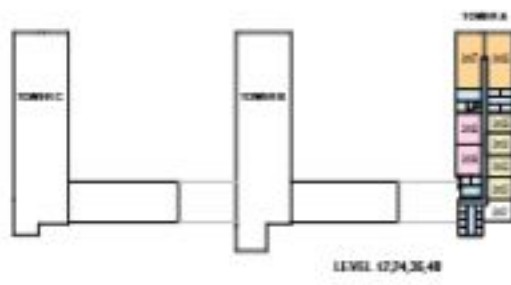


GROUND FLOOR



FLOOR PLAN LAYOUT

TOWER A

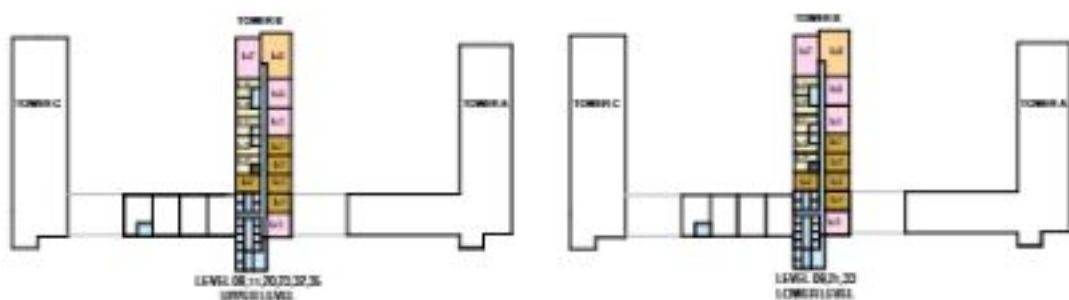


- 1 BD UNIT
- 2 BD UNIT
- 2 BD DUPLEX UNIT
- 4 BD DUPLEX UNIT
- LOBBY, CORRIDORS & STAIRS
- lift
- 4 BD UNIT
- 2 BD DUPLEX UNIT
- SERVICES
- GARBAGE ROOM

Disclaimer: 1. All dimensions are in metric, measured to wall finishes. 2. All materials, dimensions & drawings are approximate. 3. Information is subject to change without notice, at developer's absolute discretion. 4. Actual area may vary from the stated area. 5. Drawing are not to scale. 6. All images used are for illustrative purposes only and do not represent the actual size, features, specifications, fittings and/or finishes. 7. The developer reserves the right to make necessary alterations, at its absolute discretion, without any liability whatsoever.

FLOOR PLAN LAYOUT

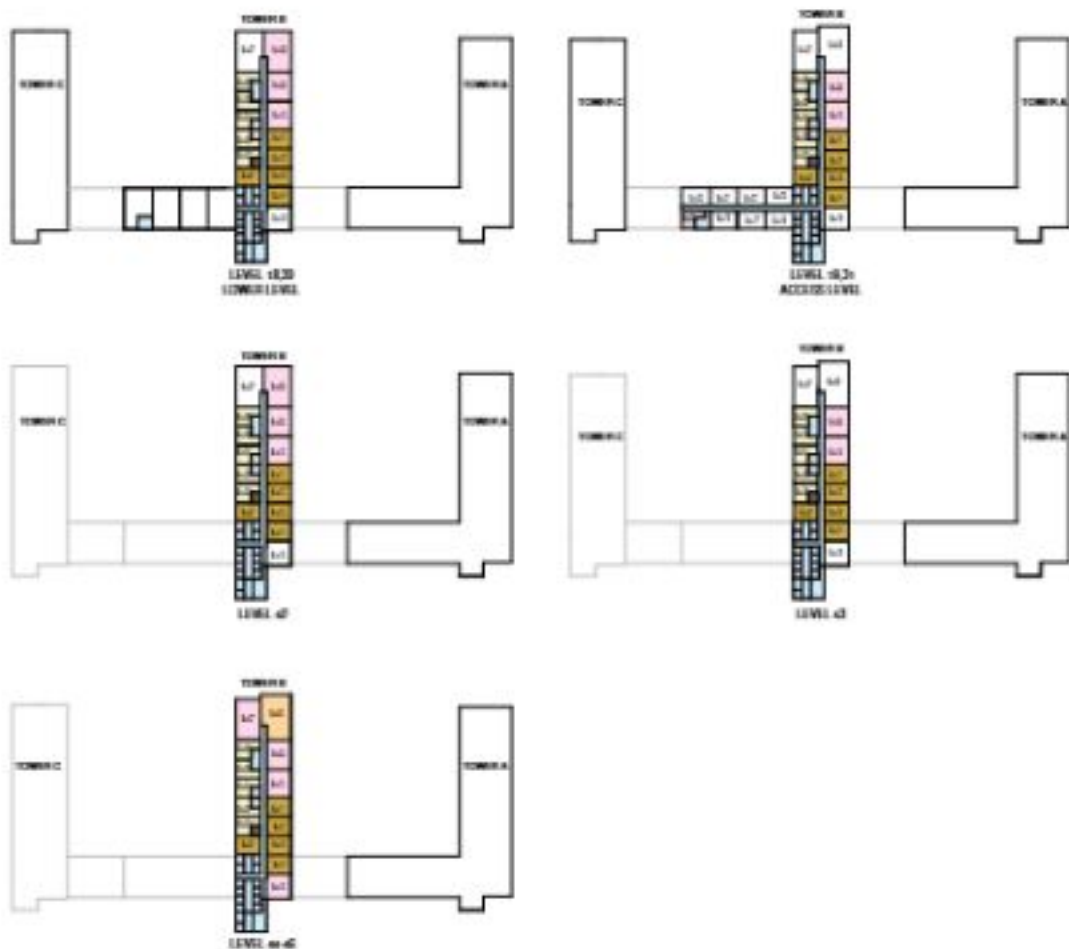
TOWER B



Disclaimer: 1. All dimensions are in metric, measured to wall finishes. 2. All materials, dimensions & drawings are approximate. 3. Information is subject to change without notice, at developer's absolute discretion. 4. Actual area may vary from the stated area. 5. Drawing are not to scale. 6. All images used are for illustrative purpose only and do not represent the actual size, features, specifications, fittings and/or fixings. 7. The developer reserve the right to make necessary alterations, at its absolute discretion, without any liability whatsoever.

FLOOR PLAN LAYOUT

TOWER B



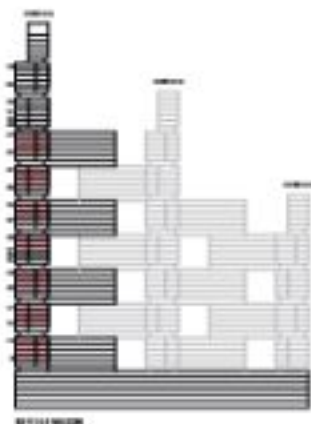
- | | | | | | |
|--------------|--------------|-------------------|-------------------|---------------------------|--------------|
| 1 BED UNIT | 2 BED UNIT | 4 BED UNIT | 3 BED DUPLEX UNIT | LOBBY, CORRIDORS & STAIRS | LIFT |
| 1.5 BED UNIT | 2.5 BED UNIT | 2 BED DUPLEX UNIT | 4 BED DUPLEX UNIT | SERVICES | GARBAGE ROOM |

Disclaimer: 1. All dimensions are in metric, measured to wall finishes. 2. All materials, dimensions & drawings are approximate. 3. Information is subject to change without notice, at developer's absolute discretion. 4. Actual area may vary from the stated area. 5. Drawing are not to scale. 6. All images used are for illustrative purpose only and do not represent the actual size, features, specifications, fittings and/or settings. 7. The developer reserves the right to make necessary/ alterations, at its absolute discretion, without any liability whatsoever.

TOWER A
UNIT PLAN LAYOUTS

1 BEDROOM APARTMENT
TYPE A (with powder room + balcony)

TOTAL SALEABLE AREA
 SUITE - 674.79 SQ.FT.
 BALCONY - 57.48 SQ.FT.
TOTAL - 732.27 SQ.FT.



List of unit numbers with this unit plan:

VIEWS

Deck

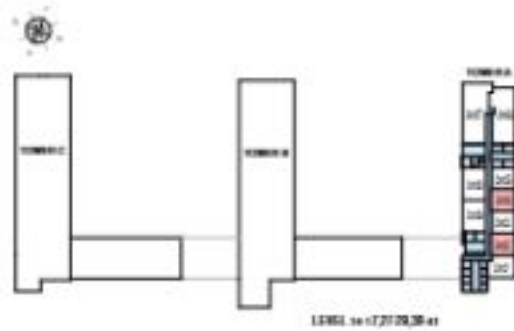
A802, A804, A807, A804, A1007, A1004, A1007, A1004, A1402, A1404, A1607, A1604, A1807, A1804, A1707, A1704, A2007, A2004, A2107, A2104, A2207, A2204, A2307, A2304, A2707, A2704, A1907, A1904, A1907, A1904, A3107, A3104, A3307, A3304, A3407, A3404, A3507, A3504, A3607, A3604, A3807, A3804, A4007, A4004, A4107, A4104, A4407, A4404, A4507, A4504, A4607, A4604, A4707, A4704

Disclaimer: 1. All dimensions are in metric, measured to wall finishes. 2. All materials, dimensions & drawings are approximate. 3. Information is subject to change without notice, at developer's absolute discretion. 4. Actual area may vary from the stated area. 5. Drawing are not to scale. 6. All images used are for illustrative purposes only and do not represent the actual site, features, specifications, fittings and/or settings. 7. The developer reserves the right to make necessary alterations, at its absolute discretion, without any liability whatsoever.

1 BEDROOM APARTMENT
TYPE A (with powder room + balcony)

TOTAL SALEABLE AREA
 SUITE - 674.79 SQ.FT.
 BALCONY - 57.88 SQ.FT.
 TOTAL - 732.27 SQ.FT.

 UNIT



List of unit numbers with this unit plan:

VIEWS

Grid

A802, A804, A807, A804, A1007, A1004, A1007, A1004, A1402, A1404, A1507, A1504, A1807, A1804, A1707, A1704, A2007, A2004, A2107, A2104, A2207, A2204, A2307, A2304, A2707, A2704, A1907, A1904, A1907, A1904, A3107, A3104, A3307, A3304, A3407, A3404, A3507, A3504, A3607, A3604, A3807, A3804, A4007, A4004, A4107, A4104, A4407, A4404, A4507, A4504, A4607, A4604, A4707, A4704

Disclaimer: 1. All dimensions are in metric, measured to wall finishes. 2. All materials, dimensions & drawings are approximate. 3. Information is subject to change without notice, at developer's absolute discretion. 4. Actual area may vary from the stated area. 5. Drawing are not to scale. 6. All images used are for illustrative purposes only and do not represent the actual area, fixtures, specifications, fittings and/or materials. 7. The developer reserve the right to make necessary alterations, at its absolute discretion, without any liability whatsoever.

1 BEDROOM APARTMENT

TYPE A (with powder room + balcony) VARIANT 1

TOTAL SALEABLE AREA

SUITE - 674.79 SQ.FT.

BALCONY - 57.88 SQ.FT.

TOTAL - 732.27 SQ.FT.

UNIT



List of unit numbers with this unit plan:

VIEWS

Desk

A803, A805, A807, A809, A1003, A1005, A1403, A1405, A1603, A1605, A1803, A1805, A1703, A1705, A2003, A2005, A2103, A2105, A2203, A2205, A2303, A2305, A2703, A2705, A2903, A2905, A1903, A1905, A1901, A1902, A3203, A3205, A3303, A3305, A3403, A3405, A3503, A3505, A3603, A3605, A3803, A3805, A4003, A4005, A4103, A4105, A4403, A4405, A4503, A4505, A4603, A4605, A4703, A4705

Disclaimer: 1. All dimensions are in metric, measured to wall finishes. 2. All materials, dimensions & drawings are approximate. 3. Information is subject to change without notice, at developer's absolute discretion. 4. Actual area may vary from the stated area. 5. Drawing are not to scale. 6. All images used are for illustrative purposes only and do not represent the actual site, fixtures, specifications, fittings and/or materials. 7. The developer may use the right to make necessary alterations, at its absolute discretion, without any liability whatsoever.

1 BEDROOM APARTMENT

TYPE B (with powder room + yard)

TOTAL SALEABLE AREA

SUITE - 675.11 SQ.F.T.

YARD - 132.72 SQ.F.T.

TOTAL - 807.83 SQ.F.T.



877-111-8808

UNIT



List of unit numbers with this unit plan:

VEWS

Creek

A1702, A1704, A1802, A1804, A1902, A1904, A2002, A2004, A2102, A2104, A2202, A2204

Disclaimer: 1. All dimensions are in metric, measured to wall finishes. 2. All materials, dimensions & drawings are approximate. 3. Information is subject to change without notice, at developer's absolute discretion. 4. Actual area may vary from the stated area. 5. Drawing are not to scale. 6. All images used are for illustrative purposes only and do not represent the actual site, features, specifications, fittings and/or settings. 7. The developer reserves the right to make necessary/alterations, at its absolute discretion, without any liability whatsoever.

1 BEDROOM APARTMENT

TYPE B (with powder room + yard)

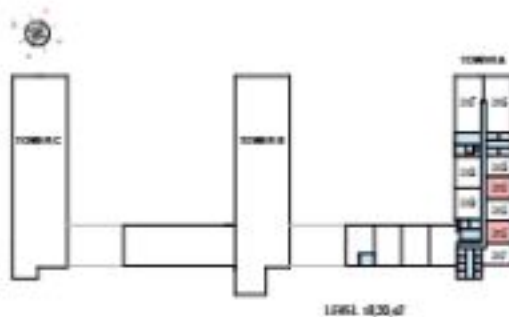
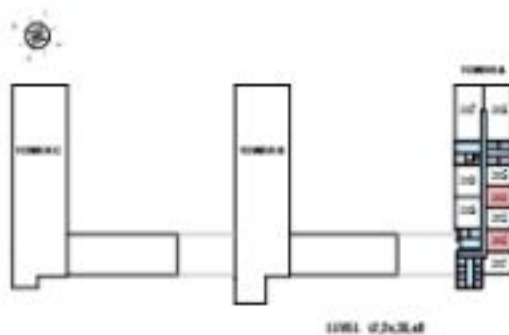
TOTAL SALEABLE AREA

SUITE - 675.11 SQ.FT.

YARD - 132.72 SQ.FT.

TOTAL - 807.83 SQ.FT.

 UNIT



List of unit numbers with this unit plan

VIEWS

Creek

A1202, A1204, A1802, A1804, A2402, A2404, A3002, A3004, A3602, A3604, A4202, A4204, A4802, A4804

Disclaimer: 1. All dimensions are in metric, measured to wall finishes. 2. All materials, dimensions & drawings are approximate. 3. Information is subject to change without notice, at developer's absolute discretion. 4. Actual area may vary from the stated area. 5. Drawing are not to scale. 6. All images used are for illustrative purposes only and do not represent the actual site, features, specifications, fittings and/or finishes. 7. The developer reserves the right to make necessary/ alterations, at its absolute discretion, without any liability whatsoever.

1 BEDROOM APARTMENT

TYPE B (with powder room + yard) VARIANT 1

TOTAL SALEABLE AREA

SUITE - 675.11 SQ.FT.

YARD - 132.72 SQ.FT.

TOTAL - 807.83 SQ.FT.



87111 00000

UNIT



List of unit numbers with this unit plan

VIEWS

Creek

A1701, A1702, A1801, A1802, A1901, A1902, A2001, A2002, A2101, A2102, A2201, A2202

Disclaimer: 1. All dimensions are in metric, measured to wall finishes. 2. All materials, dimensions & drawings are approximate. 3. Information is subject to change without notice, at developer's absolute discretion. 4. Actual area may vary from the stated area. 5. Drawing are not to scale. 6. All images used are for illustrative purposes only and do not represent the actual site, features, specifications, fittings and/or finishes. 7. The developer reserves the right to make necessary/alterations, at its absolute discretion, without any liability whatsoever.

1 BEDROOM APARTMENT

TYPE B (with powder room + yard) VARIANT 1

TOTAL SALEABLE AREA

SUITE - 675.11 SQ.FT.

YARD - 132.72 SQ.FT.

TOTAL - 807.83 SQ.FT.

 UNIT



List of unit numbers with this unit plan

VIEWS

Creek

A1203, A1205, A1803, A1805, A2403, A2405, A3003, A3005, A3603, A3605, A4203, A4205, A4803, A4805

Disclaimer: 1. All dimensions are in metric, measured to wall finishes. 2. All materials, dimensions & drawings are approximate. 3. Information is subject to change without notice, at developer's absolute discretion. 4. Actual area may vary from the stated area. 5. Drawing are not to scale. 6. All images used are for illustrative purposes only and do not represent the actual site, features, specifications, fittings and/or finishes. 7. The developer reserve the right to make necessary/ alterations, at its absolute discretion, without any liability whatsoever.

1 BEDROOM APARTMENT

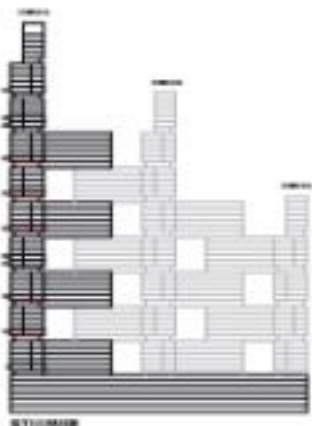
TYPE C (with powder room + yard)

TOTAL SALEABLE AREA

SUITE - 674.79 SQ.F.T.

YARD - 133.04 SQ.F.T.

TOTAL - 807.83 SQ.F.T.



List of unit numbers with this unit plan

VIEWS

Creek

A3302, A1304, A1902, A1904, A3102, A3104, A3702, A3704, A4302, A4304

Disclaimer: 1. All dimensions are in metric, measured to wall finishes. 2. All materials, dimensions & drawings are approximate. 3. Information is subject to change without notice, at developer's absolute discretion. 4. Actual area may vary from the stated area. 5. Drawing are not to scale. 6. All images used are for illustrative purposes only and do not represent the actual site, features, specifications, fittings and/or settings. 7. The developer reserves the right to make necessary alterations, at its absolute discretion, without any liability whatsoever.

1 BEDROOM APARTMENT

TYPE C (with powder room + yard)

TOTAL SALEABLE AREA

SUITE - 674.79 SQ.FT.

YARD - 133.04 SQ.FT.

TOTAL - 807.83 SQ.FT.

UNIT



List of unit numbers with this unit plan

VEWS

Creek

A3302, A1304, A1902, A1904, A3102, A3104, A3702, A3704, A4302, A4304

Disclaimer: 1. All dimensions are in metric, measured to wall finishes. 2. All materials, dimensions & drawings are approximate. 3. Information is subject to change without notice, at developer's absolute discretion. 4. Actual area may vary from the stated area. 5. Drawing are not to scale. 6. All images used are for illustrative purposes only and do not represent the actual site, features, specifications, fittings and/or finishes. 7. The developer reserves the right to make necessary/ alterations, at its absolute discretion, without any liability whatsoever.

1 BEDROOM APARTMENT

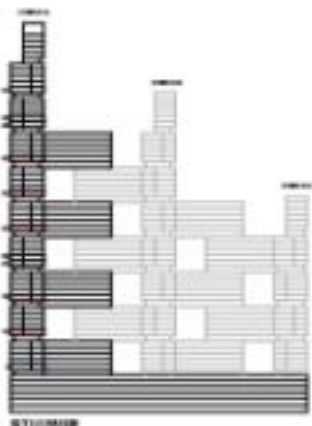
TYPE C (with powder room + yard) VARIANT 1

TOTAL SALEABLE AREA

SUITE - 674.79 SQ.FT.

YARD - 133.04 SQ.FT.

TOTAL - 807.83 SQ.FT.



01111002B

UNIT



List of unit numbers with this unit plan

VIEWS

Creek

A3001, A1301, A1901, A1601, A3101, A1801, A3701, A3701, A4301, A4301

Disclaimer: 1. All dimensions are in metric, measured to wall finishes. 2. All materials, dimensions & drawings are approximate. 3. Information is subject to change without notice, at developer's absolute discretion. 4. Actual area may vary from the stated area. 5. Drawing are not to scale. 6. All images used are for illustrative purposes only and do not represent the actual site, features, specifications, fittings and/or settings. 7. The developer reserve the right to make necessary/alterations, at its absolute discretion, without any liability whatsoever.

1 BEDROOM APARTMENT

TYPE C (with powder room + yard) VARIANT 1

TOTAL SALEABLE AREA

SUITE - 674.79 SQ.FT.

YARD - 133.04 SQ.FT.

TOTAL - 807.83 SQ.FT.

UNIT



List of unit numbers with this unit plan

VIEWS

Crack

A2001, A1301, A1901, A1601, A3101, A1801, A3701, A3701, A4301, A4301

Disclaimer: 1. All dimensions are in metric, measured to wall finishes. 2. All materials, dimensions & drawings are approximate. 3. Information is subject to change without notice, at developer's absolute discretion. 4. Actual area may vary from the stated area. 5. Drawing are not to scale. 6. All images used are for illustrative purposes only and do not represent the actual site, features, specifications, fittings and/or settings. 7. The developer reserves the right to make necessary alterations, at its absolute discretion, without any liability whatsoever.

2 BEDROOM APARTMENT
TYPE A (with powder room + balcony)

TOTAL SALEABLE AREA
 SUITE - 1,034.83 SQ.FT.
 BALCONY - 64.89 SQ.FT.
 TOTAL - 1,099.72 SQ.FT.

 UNIT



List of unit numbers with this unit plan:

VEWS

Sea A/Rhor, Amenities
 A909, A929

Sea A/Rhor, Golf Course, Amenities
 A809, A1009, A1409, A1609, A1809, A1709, A2009, A2109, A2709, A2909

Sea A/Rhor, Golf Course
 A2709, A2909, A2909, A3219, A3219, A3409, A3509, A3809, A3809, A4009, A4109, A4409, A4509, A4609, A4709

Disclaimer: 1. All dimensions are in metric, measured to wall finishes. 2. All materials, dimensions & drawings are approximate. 3. Information is subject to change without notice, at developer's absolute discretion. 4. Actual area may vary from the stated area. 5. Drawing are not to scale. 6. All images used are for illustrative purposes only and do not represent the actual site, features, specifications, fittings and/or finishes. 7. The developer reserve the right to make necessary/ alterations, at its absolute discretion, without any liability whatsoever.

2 BEDROOM APARTMENT

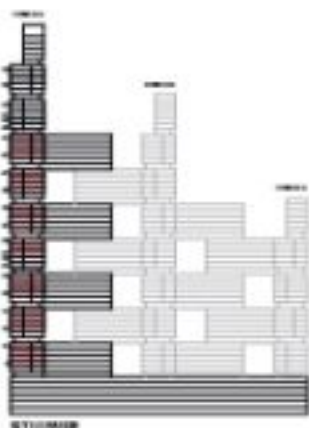
TYPE A (with powder room + balcony) VARIANT 1

TOTAL SALEABLE AREA

SUITE - 1,034.83 SQ.FT.

BALCONY - 64.89 SQ.FT.

TOTAL - 1,099.32 SQ.FT.



BT110402B

UNIT



List of unit numbers with this unit plan

VIEWS

Sea A/Rhor, Amenity

A306, A308

Sea A/Rhor, Golf Course, Amenity

A308, A308, A340, A308, A308, A308, A308, A308, A308, A308

Sea A/Rhor, Golf Course

A308, A308, A308, A308, A308, A308, A308, A308, A308, A308, A308, A308, A308, A308

Disclaimer: 1. All dimensions are in metric, measured to wall finishes. 2. All materials, dimensions & drawings are approximate. 3. Information is subject to change without notice, at developer's absolute discretion. 4. Actual area may vary from the stated area. 5. Drawing are not to scale. 6. All images used are for illustrative purposes only and do not represent the actual site, features, specifications, fittings and/or finishes. 7. The developer reserves the right to make necessary alterations, at its absolute discretion, without any liability whatsoever.

2 BEDROOM APARTMENT

TYPE A (with powder room + balcony) VARIANT 1

TOTAL SALEABLE AREA

SUITE - 1,034.83 SQ.FT.

BALCONY - 64.89 SQ.FT.

TOTAL - 1,099.72 SQ.FT.

 UNIT



List of unit numbers with this unit plan:

VIEWS

Sea Arkhor, Amestitz

A801, A802

Sea Arkhor, Golf Course, Amestitz

A803, A804, A805, A806, A807, A808, A809, A810, A811, A812, A813, A814, A815, A816, A817, A818, A819, A820

Sea Arkhor, Golf Course

A7701, A7801, A7901, A2001, A2101, A2201, A2301, A2401, A2501, A2601, A2701, A2801, A2901, A3001, A3101, A3201, A3301, A3401, A3501, A3601, A3701, A3801, A3901, A4001, A4101, A4201, A4301, A4401, A4501, A4601, A4701

Disclaimer: 1. All dimensions are in metric, measured to wall finishes. 2. All materials, dimensions & drawings are approximate. 3. Information is subject to change without notice, at developer's absolute discretion. 4. Actual area may vary from the stated area. 5. Drawing are not to scale. 6. All images used are for illustrative purposes only and do not represent the actual site, features, specifications, fittings and/or finishes. 7. The developer reserve the right to make necessary/ alterations, at its absolute discretion, without any liability whatsoever.

2 BEDROOM APARTMENT

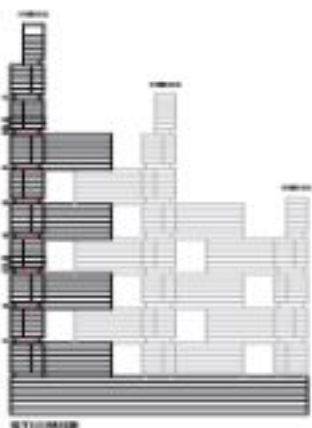
TYPE G (with powder room + yard)

TOTAL SALEABLE AREA

SUITE - 1,025.05 SQ.FT.

YARD - 894.82 SQ.FT.

TOTAL - 1,920.87 SQ.FT.



8711-0428

UNIT



List of unit numbers with this unit plan

VIEWS

Sea Arkler, Golf Course, Amenities
A-208, A-1808, A-7408

Sea Arkler, Golf Course
A-3008, A-3608, A-6208, A-6808

Disclaimer: 1. All dimensions are in metric, measured to wall finishes. 2. All materials, dimensions & drawings are approximate. 3. Information is subject to change without notice, at developer's absolute discretion. 4. Actual area may vary from the stated area. 5. Drawing are not to scale. 6. All images used are for illustrative purposes only and do not represent the actual site, features, specifications, fittings and/or ratings. 7. The developer reserves the right to make necessary/alterations, at its absolute discretion, without any liability whatsoever.

2 BEDROOM APARTMENT

TYPE G (with powder room + yard)

TOTAL SALEABLE AREA

SUITE - 1,025.05 SQ.FT.

YARD - 884.82 SQ.FT.

TOTAL - 1,909.87 SQ.FT.

 UNIT



List of unit numbers with this unit plan

VIEWS

Sea Arkhor, Golf Course, Amenity
A-708, A-808, A-748

Sea Arkhor, Golf Course
A-308, A-309, A-408, A-409

Disclaimer: 1. All dimensions are in metric, measured to wall finishes. 2. All materials, dimensions & drawings are approximate. 3. Information is subject to change without notice, at developer's absolute discretion. 4. Actual area may vary from the stated area. 5. Drawing are not to scale. 6. All images used are for illustrative purposes only and do not represent the actual site, fixtures, specifications, fittings and/or finishes. 7. The developer reserves the right to make necessary/ alterations, at its absolute discretion, without any liability whatsoever.

2 BEDROOM APARTMENT

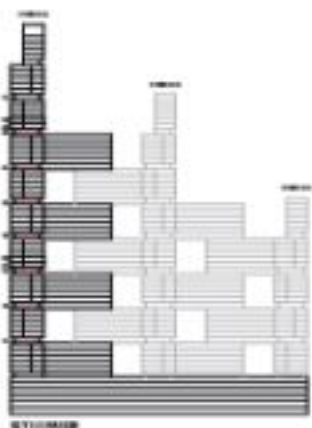
TYPE G (with powder room + yard) VARIANT 1

TOTAL SALEABLE AREA

SUITE - 1,025.05 SQ.FT.

YARD - 894.82 SQ.FT.

TOTAL - 1,920.87 SQ.FT.



8111-0428

UNIT



List of unit numbers with this unit plan

VIEWS

Sea Arkler, Golf Course, Amenities
A3008, A1808, A2408

Sea Arkler, Golf Course
A3008, A3008, A4008, A4608

Disclaimer: 1. All dimensions are in metric, measured to wall finishes. 2. All materials, dimensions & drawings are approximate. 3. Information is subject to change without notice, at developer's absolute discretion. 4. Actual area may vary from the stated area. 5. Drawing are not to scale. 6. All images used are for illustrative purposes only and do not represent the actual site, features, specifications, fittings and/or finishes. 7. The developer reserves the right to make necessary/alterations, at its absolute discretion, without any liability whatsoever.

2 BEDROOM APARTMENT

TYPE G (with powder room + yard) VARIANTT

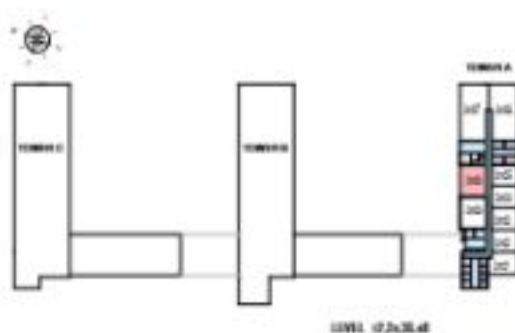
TOTAL SALEABLE AREA

SUITE - 1,025.05 SQ.FT.

YARD - 884.82 SQ.FT.

TOTAL - 1,909.87 SQ.FT.

 UNIT



List of unit numbers with this unit plan

VIEWS

Sea Arkhor, Golf Course, Amenity
A2708, A1808, A2748

Sea Arkhor, Golf Course
A3308, A3608, A4708, A4808

Disclaimer: 1. All dimensions are in metric, measured to wall finishes. 2. All materials, dimensions & drawings are approximate. 3. Information is subject to change without notice, at developer's absolute discretion. 4. Actual area may vary from the stated area. 5. Drawing are not to scale. 6. All images used are for illustrative purposes only and do not represent the actual site, features, specifications, fittings and/or finishes. 7. The developer reserves the right to make necessary alterations, at its absolute discretion, without any liability whatsoever.

2 BEDROOM APARTMENT

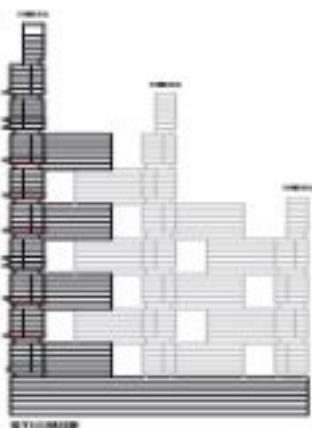
TYPE P (with powder room + yard)

TOTAL SALEABLE AREA

SUITE - 1,034.61 SQ.FT.

YARD - 179.41 SQ.FT.

TOTAL - 1,213.02 SQ.FT.



011104020

UNIT



List of unit numbers with this unit plan

VIEWS

Sea Al Khay, Golf Course, Amalfita
A309, A190

Sea Al Khay, Golf Course
A309, A309, A409

Disclaimer: 1. All dimensions are in metric, measured to wall finishes. 2. All materials, dimensions & drawings are approximate. 3. Information is subject to change without notice, at developer's absolute discretion. 4. Actual area may vary from the stated area. 5. Drawing are not to scale. 6. All images used are for illustrative purposes only and do not represent the actual site, features, specifications, fittings and/or finishes. 7. The developer may use the right to make necessary/alter others, at its absolute discretion, without any liability whatsoever.

2 BEDROOM APARTMENT

TYPE P (with powder room + yard)

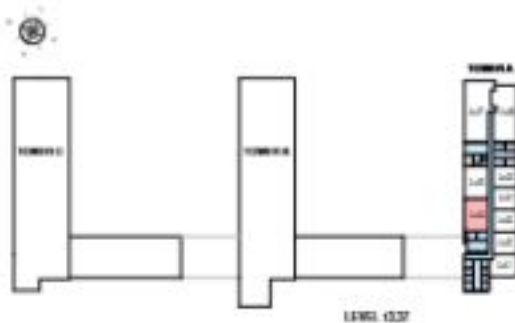
TOTAL SALEABLE AREA

SUITE - 1,034.61 SQ.FT.

YARD - 179.41 SQ.FT.

TOTAL - 1,213.02 SQ.FT.

 UNIT



List of unit numbers with this unit plan

VIEWS

Sea AlKhor, Golf Course, Amalfita
A-309, A-308

Sea AlKhor, Golf Course
A-309, A-3109, A-409

Disclaimer: 1. All dimensions are in metric, measured to wall finishes. 2. All materials, dimensions & drawings are approximate. 3. Information is subject to change without notice, at developer's absolute discretion. 4. Actual area may vary from the stated area. 5. Drawing are not to scale. 6. All images used are for illustrative purposes only and do not represent the actual site, fixtures, specifications, fittings and/or finishes. 7. The developer reserves the right to make necessary/ alterations, at its absolute discretion, without any liability whatsoever.

2 BEDROOM APARTMENT

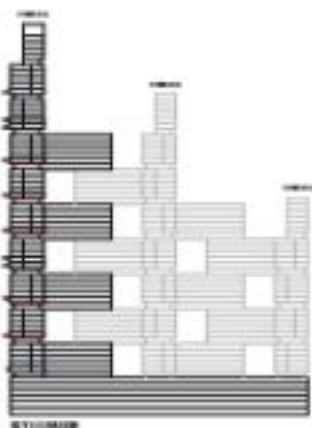
TYPE P (with powder room + yard) VARIANT 1

TOTAL SALEABLE AREA

SUITE - 1,034.61 SQ.FT.

YARD - 179.41 SQ.FT.

TOTAL - 1,214.02 SQ.FT.



011104020

UNIT



List of unit numbers with this unit plan

VIEWS

Sea Arkhor, Golf Course, Amenity
A-300, A-600

Sea Arkhor, Golf Course
A-300, A-3100, A-400

Disclaimer: 1. All dimensions are in metric, measured to wall finishes. 2. All materials, dimensions & drawings are approximate. 3. Information is subject to change without notice, at developer's absolute discretion. 4. Actual area may vary from the stated area. 5. Drawing are not to scale. 6. All images used are for illustrative purposes only and do not represent the actual site, features, specifications, fittings and/or settings. 7. The developer may use the right to make necessary alterations, at its absolute discretion, without any liability whatsoever.

2 BEDROOM APARTMENT

TYPE P (with powder room + yard) VARIANT 1

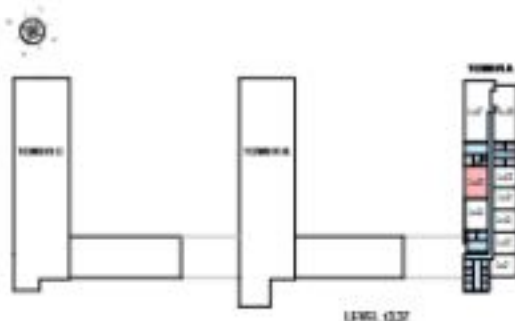
TOTAL SALEABLE AREA

SUITE - 1,034.61 SQ.FT.

YARD - 179.41 SQ.FT.

TOTAL - 1,214.02 SQ.FT.

 UNIT



List of unit numbers with this unit plan

VIEWS

Sea Arkhor, Golf Course, Amstel
A-300, A-900

Sea Arkhor, Golf Course
A-300, A-3100, A-400

Disclaimer: 1. All dimensions are in metric, measured to wall finishes. 2. All materials, dimensions & drawings are approximate. 3. Information is subject to change without notice, at developer's absolute discretion. 4. Actual area may vary from the stated area. 5. Drawing are not to scale. 6. All images used are for illustrative purposes only and do not represent the actual site, features, specifications, fittings and/or finishes. 7. The developer reserves the right to make necessary/ alterations, at its absolute discretion, without any liability whatsoever.

3 BEDROOM APARTMENT

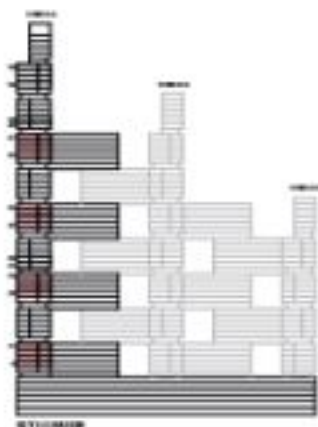
TYPE A (with maid room + balcony)

TOTAL SALEABLE AREA

SUITE - 1,642.57 SQ.FT.

BALCONY - 274.54 SQ.FT.

TOTAL - 1,917.11 SQ.FT.



UNIT



List of unit numbers with this unit plan

VIEWS

Downtown, Ras Al Khaima, Creek, Golf Course, water body, American

A801, A802, A803, A1101, A1102, A1103, A1104, A1105, A1106, A1107

Downtown, Ras Al Khaima, Creek, Golf Course, water body

A3201, A3301, A3401, A3501, A4401, A4501, A4601, A4701

Disclaimer: 1. All dimensions are in metric, measured to wall finishes. 2. All materials, dimensions & drawings are approximate. 3. Information is subject to change without notice, at developer's absolute discretion. 4. Actual area may vary from the stated area. 5. Drawing are not to scale. 6. All images used are for illustrative purposes only and do not represent the actual site, fixtures, specifications, fittings and/or finishes. 7. The developer reserves the right to make necessary alterations, at its absolute discretion, without any liability whatsoever.

3 BEDROOM APARTMENT

TYPE A (with maid room + balcony)

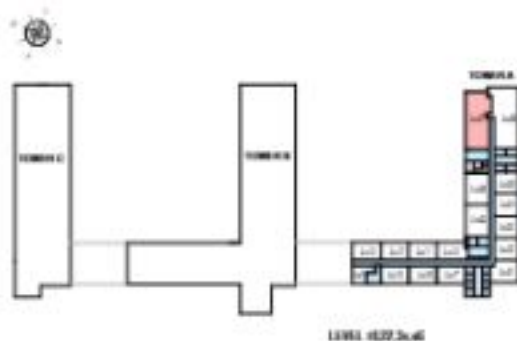
TOTAL SALEABLE AREA

SUITE - 1,642.57 SQ.FT.

BALCONY - 274.54 SQ.FT.

TOTAL - 1,917.11 SQ.FT.

 UNIT



List of unit numbers with this unit plan

VIEWS

Downtown, Ras Al Khaima Creek, Golf Course, water body, Amenities
A801, A802, A803, A804, A805, A806, A807, A808, A809, A810

Downtown, Ras Al Khaima Creek, Golf Course, water body
A3201, A3202, A3203, A3204, A3205, A3206, A3207, A3208, A3209

Disclaimer: 1. All dimensions are in metric, measured to wall finishes. 2. All materials, dimensions & drawings are approximate. 3. Information is subject to change without notice, at developer's absolute discretion. 4. Actual area may vary from the stated area. 5. Drawing are not to scale. 6. All images used are for illustrative purposes only and do not represent the actual site, fixtures, specifications, fittings and/or finishes. 7. The developer reserves the right to make necessary alterations, at its absolute discretion, without any liability whatsoever.

3 BEDROOM APARTMENT

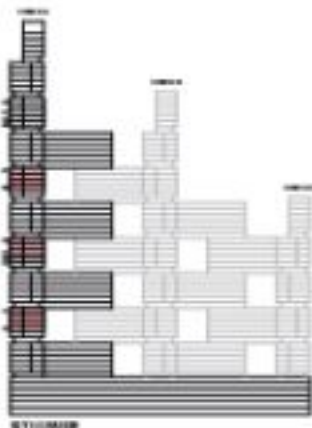
TYPE A (with maid room + balcony) VARIANT 1

TOTAL SALEABLE AREA

SUITE - 1,642.57 SQ.FT.

BALCONY - 274.54 SQ.FT.

TOTAL - 1,917.11 SQ.FT.



011104208

UNIT



List of unit numbers with this unit plan

VIEWS

Sea, Althea, Creek, Golf Course

A1906, A1908, A1909, A1706, A2706, A2906, A2908, A3106, A3108, A4106, A4108

Disclaimer: 1. All dimensions are in metric, measured to wall finishes. 2. All materials, dimensions & drawings are approximate. 3. Information is subject to change without notice, at developer's absolute discretion. 4. Actual area may vary from the stated area. 5. Drawing are not to scale. 6. All images used are for illustrative purposes only and do not represent the actual site, features, specifications, fittings and/or finishes. 7. The developer reserves the right to make necessary alterations, at its absolute discretion, without any liability whatsoever.

3 BEDROOM APARTMENT

TYPE A (with maid room + balcony) VARIANT 1

TOTAL SALEABLE AREA

SUITE - 1,642.57 SQ.FT.

BALCONY - 274.54 SQ.FT.

TOTAL - 1,917.11 SQ.FT.

 UNIT



List of unit numbers with this unit plan

VIEWS

Sea, Al Khor, Creek, Golf Course

A1806, A1808, A1809, A1706, A2706, A2906, A2908, A3806, A3808, A4806, A4808

Disclaimer: 1. All dimensions are in metric, measured to wall finishes. 2. All materials, dimensions & drawings are approximate. 3. Information is subject to change without notice, at developer's absolute discretion. 4. Actual area may vary from the stated area. 5. Drawing are not to scale. 6. All images used are for illustrative purposes only and do not represent the actual site, features, specifications, fittings and/or finishes. 7. The developer reserves the right to make necessary/ alterations, at its absolute discretion, without any liability whatsoever.

3 BEDROOM APARTMENT

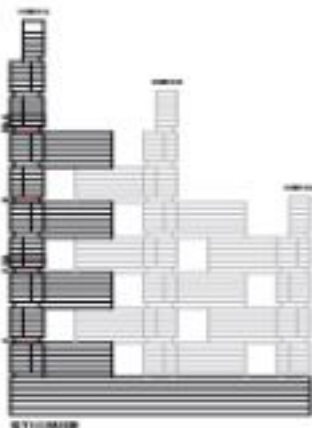
TYPE C (with store room and maid room + yard)

TOTAL SALEABLE AREA

SUITE - 1,708.88 SQ.FT.

YARD - 782.88 SQ.FT.

TOTAL - 2,491.54 SQ.FT.



011104208

UNIT



List of unit numbers with this unit plan

VIEWS

Downtown, Ras Al Khair, Creek, Golf Course, Waterbody
A3006, A3406, A3008, A3008

Disclaimer: 1. All dimensions are in metric, measured to wall finishes. 2. All materials, dimensions & drawings are approximate. 3. Information is subject to change without notice, at developer's absolute discretion. 4. Actual area may vary from the stated area. 5. Drawing are not to scale. 6. All images used are for illustrative purposes only and do not represent the actual site, features, specifications, fittings and/or finishes. 7. The developer reserve the right to make necessary alterations, at its absolute discretion, without any liability whatsoever.

3 BEDROOM APARTMENT

TYPE C (with store room and maid room + yard)

TOTAL SALEABLE AREA

SUITE - 1,708.88 SQ.FT.

YARD - 782.88 SQ.FT.

TOTAL - 2,491.54 SQ.FT.

 UNIT



List of unit numbers with this unit plan

VIEWS

Downtown, Ras Al Khaima, Creek, Golf Course, Waterbody
A3006, A3406, A3008, A3008

Disclaimer: 1. All dimensions are in metric, measured to wall finishes. 2. All materials, dimensions & drawings are approximate. 3. Information is subject to change without notice, at developer's absolute discretion. 4. Actual area may vary from the stated area. 5. Drawing are not to scale. 6. All images used are for illustrative purposes only and do not represent the actual site, features, specifications, fittings and/or finishes. 7. The developer reserves the right to make necessary/ alterations, at its absolute discretion, without any liability whatsoever.

3 BEDROOM APARTMENT

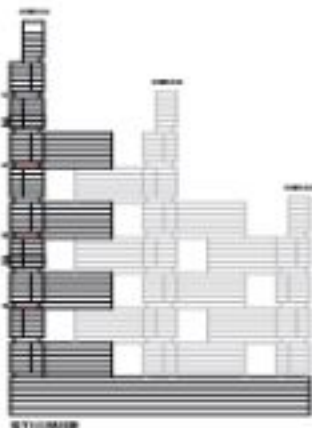
TYPE C (with store room and maid room + yard) VARIANT 1

TOTAL SALEABLE AREA

SUITE - 1,708.86 SQ.FT.

YARD - 787.88 SQ.FT.

TOTAL - 2,496.74 SQ.FT.



01110000

UNIT



List of unit numbers with this unit plan

VIEWS

Downtown, Sea Al Khay, Creek, Golf Course, water body, Amman
A3307

Downtown, Sea Al Khay, Creek, Golf Course, water body
A3307, A4007

Disclaimer: 1. All dimensions are in metric, measured to wall finishes. 2. All materials, dimensions & drawings are approximate. 3. Information is subject to change without notice, at developer's absolute discretion. 4. Actual area may vary from the stated area. 5. Drawing are not to scale. 6. All images used are for illustrative purposes only and do not represent the actual site, features, specifications, fittings and/or settings. 7. The developer reserves the right to make necessary/alterations, at its absolute discretion, without any liability whatsoever.

3 BEDROOM APARTMENT

TYPE C (with store room and maid room + yard) VARIANT 1

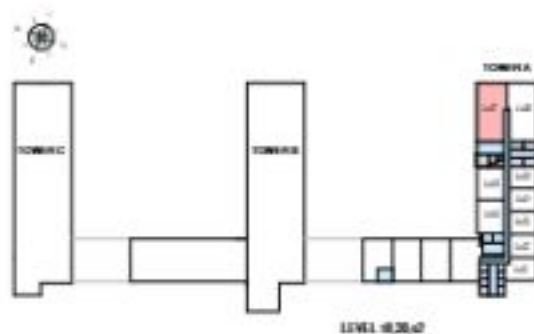
TOTAL SALEABLE AREA

SUITE - 1,708.86 SQ.FT.

YARD - 782.88 SQ.FT.

TOTAL - 2,491.54 SQ.FT.

 UNIT



List of unit numbers with this unit plan

VIEWS

Downtown, Sea Al Khay, Creek, Golf Course, water body, Amman
A3307

Downtown, Sea Al Khay, Creek, Golf Course, water body
A3301, A407

Disclaimer: 1. All dimensions are in metric, measured to wall finishes. 2. All materials, dimensions & drawings are approximate. 3. Information is subject to change without notice, at developer's absolute discretion. 4. Actual area may vary from the stated area. 5. Drawing are not to scale. 6. All images used are for illustrative purposes only and do not represent the actual site, features, specifications, fittings and/or finishes. 7. The developer reserves the right to make necessary/ alterations, at its absolute discretion, without any liability whatsoever.

3 BEDROOM APARTMENT

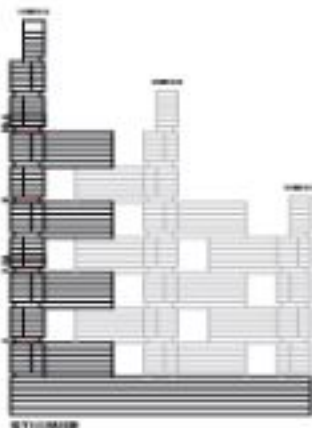
TYPE D (with store room and maid room + yard)

TOTAL SALEABLE AREA

SUITE - 1,708.88 SQ.FT.

YARD - 536.03 SQ.FT.

TOTAL - 2,244.91 SQ.FT.



011104108

UNIT



List of unit numbers with this unit plan

VIEWS

Downtown, Sea Al Khor, Creek, Golf Course, water body, Ametities
A2701, A2702

Downtown, Sea Al Khor, Creek, Golf Course, water body
A2801, A2802

Disclaimer: 1. All dimensions are in metric, measured to wall finishes. 2. All materials, dimensions & drawings are approximate. 3. Information is subject to change without notice, at developer's absolute discretion. 4. Actual area may vary from the stated area. 5. Drawing are not to scale. 6. All images used are for illustrative purposes only and do not represent the actual site, fixtures, specifications, fittings and/or materials. 7. The developer reserve the right to make necessary/alterations, at its absolute discretion, without any liability whatsoever.

3 BEDROOM APARTMENT

TYPE D (with store room and maid room + yard)

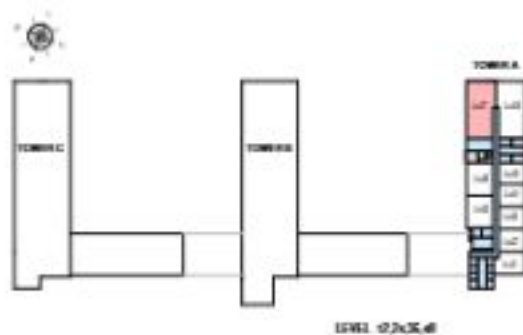
TOTAL SALEABLE AREA

SUITE - 1,708.88 SQ.FT.

YARD - 536.03 SQ.FT.

TOTAL - 2,244.89 SQ.FT.

 UNIT



List of unit numbers with this unit plan

VIEWS

Downview, Sea Al Khay, Creek, Golf Course, water body, Amman
A2701, A2807

Downview, Sea Al Khay, Creek, Golf Course, water body
A3801, A4807

Disclaimer: 1. All dimensions are in metric, measured to wall finishes. 2. All materials, dimensions & drawings are approximate. 3. Information is subject to change without notice, at developer's absolute discretion. 4. Actual area may vary from the stated area. 5. Drawing are not to scale. 6. All images used are for illustrative purposes only and do not represent the actual site, features, specifications, fittings and/or finishes. 7. The developer reserves the right to make necessary/ alterations, at its absolute discretion, without any liability whatsoever.

3 BEDROOM APARTMENT

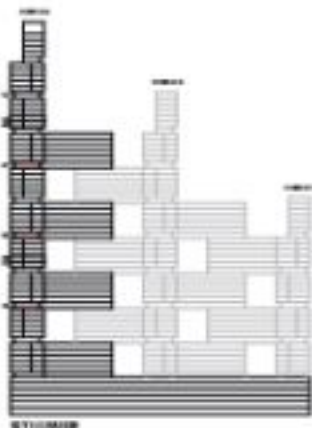
TYPE D (with store room and maid room + yard) VARIANT 1

TOTAL SALEABLE AREA

SUITE - 1,708.88 SQ.FT.

YARD - 536.03 SQ.FT.

TOTAL - 2,244.91 SQ.FT.



01110000

UNIT



List of unit numbers with this unit plan

VIEWS

Downtown, Sea Al Khay, Creek, Golf Course, water body
A300, A300G, A410G

Disclaimer: 1. All dimensions are in metric, measured to wall finishes. 2. All materials, dimensions & drawings are approximate. 3. Information is subject to change without notice, at developer's absolute discretion. 4. Actual area may vary from the stated area. 5. Drawing are not to scale. 6. All images used are for illustrative purposes only and do not represent the actual site, features, specifications, fittings and/or finishes. 7. The developer reserves the right to make necessary/ alterations, at its absolute discretion, without any liability whatsoever.

3 BEDROOM APARTMENT

TYPE D (with store room and maid room + yard) VARIANT 1

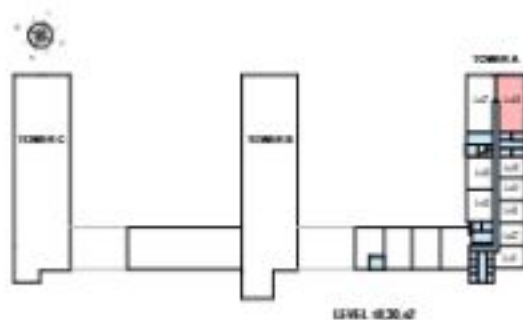
TOTAL SALEABLE AREA

SUITE - 1,708.88 SQ.FT.

YARD - 536.03 SQ.FT.

TOTAL - 2,244.91 SQ.FT.

 UNIT



List of unit numbers with this unit plan

VEWS

Downtown, Sea Al Khay, Creek, Golf Course, water body
A300, A300G, A4100

Disclaimer: 1. All dimensions are in metric, measured to wall finishes. 2. All materials, dimensions & drawings are approximate. 3. Information is subject to change without notice, at developer's absolute discretion. 4. Actual area may vary from the stated area. 5. Drawing are not to scale. 6. All images used are for illustrative purposes only and do not represent the actual site, features, specifications, fittings and/or finishes. 7. The developer reserves the right to make necessary/ alterations, at its absolute discretion, without any liability whatsoever.

3 BEDROOM APARTMENT

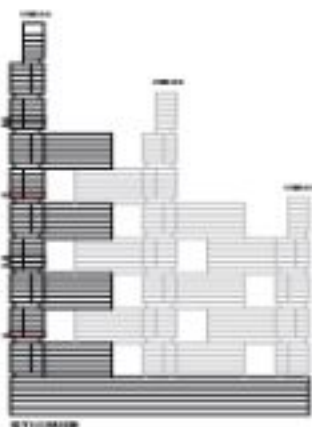
TYPE E (with maid room + yard)

TOTAL SALEABLE AREA

SUITE - 1,642.57 SQ.FT.

YARD - 1,139.86 SQ.FT.

TOTAL - 2,822.23 SQ.FT.



011104108

UNIT



List of unit numbers with this unit plan

VIEWS

Sea Arches, Creek, Golf Course
A306, A308

Disclaimer: 1. All dimensions are in metric, measured to wall finishes. 2. All materials, dimensions & drawings are approximate. 3. Information is subject to change without notice, at developer's absolute discretion. 4. Actual area may vary from the stated area. 5. Drawing are not to scale. 6. All images used are for illustrative purposes only and do not represent the actual site, features, specifications, fittings and/or finishes. 7. The developer reserves the right to make necessary/alterations, at its absolute discretion, without any liability whatsoever.

3 BEDROOM APARTMENT

TYPE E (with maid room + yard)

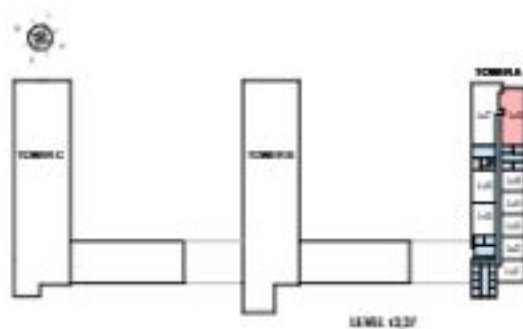
TOTAL SALEABLE AREA

SUITE - 1,642.57 SQ.FT.

YARD - 1,179.66 SQ.FT.

TOTAL - 2,822.23 SQ.FT.

 UNIT



List of unit numbers with this unit plan

VEWS

Sea A/River, Creek, Golf Course
AG06, A3106

Disclaimer: 1. All dimensions are in metric, measured to wall finishes. 2. All materials, dimensions & drawings are approximate. 3. Information is subject to change without notice, at developer's absolute discretion. 4. Actual area may vary from the stated area. 5. Drawing are not to scale. 6. All images used are for illustrative purposes only and do not represent the actual site, features, specifications, fittings and/or finishes. 7. The developer reserves the right to make necessary alterations, at its absolute discretion, without any liability whatsoever.

3 BEDROOM APARTMENT

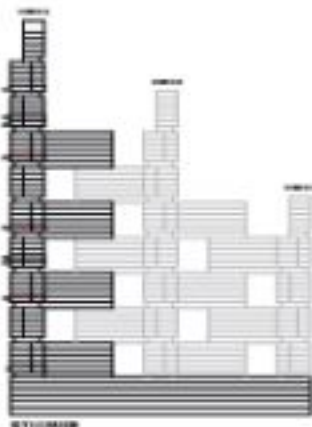
TYPE E (with maid room + yard) VARIANT 1

TOTAL SALEABLE AREA

SUITE - 1,642.57 SQ.FT.

YARD - 1,139.86 SQ.FT.

TOTAL - 2,822.23 SQ.FT.



011104028

UNIT



List of unit numbers with this unit plan

VIEWS

Downtown, Ras Al Khaym, Creek, Golf Course, water body, Amenities
A3307

Downtown, Ras Al Khaym, Creek, Golf Course, water body
A3307, A4307

Disclaimer: 1. All dimensions are in metric, measured to wall finishes. 2. All materials, dimensions & drawings are approximate. 3. Information is subject to change without notice, at developer's absolute discretion. 4. Actual area may vary from the stated area. 5. Drawing are not to scale. 6. All images used are for illustrative purposes only and do not represent the actual site, features, specifications, fittings and/or finishes. 7. The developer may use the right to make necessary/alterations, at its absolute discretion, without any liability whatsoever.

3 BEDROOM APARTMENT
TYPE E (with maid room + yard) VARIANT 1

TOTAL SALEABLE AREA
SUITE - 1,642.57 SQ.FT.
YARD - 579.86 SQ.FT.
TOTAL - 2,822.23 SQ.FT.

 **UNIT**



List of unit numbers with this unit plan

VIEWS

Downtown, Ras Al Khaima, Creek, Golf Course, water body, Amenities
A3307

Downtown, Ras Al Khaima, Creek, Golf Course, water body
A3307, A4307

Disclaimer: 1. All dimensions are in metric, measured to wall finishes. 2. All materials, dimensions & drawings are approximate. 3. Information is subject to change without notice, at developer's absolute discretion. 4. Actual area may vary from the stated area. 5. Drawing are not to scale. 6. All images used are for illustrative purposes only and do not represent the actual site, features, specifications, fittings and/or finishes. 7. The developer reserves the right to make necessary alterations, at its absolute discretion, without any liability whatsoever.

4 BEDROOM APARTMENT

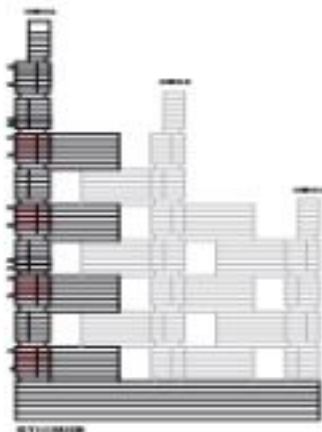
TYPE A (with store room, maid room and powder room + balcony)

TOTAL SALEABLE AREA

SUITE - 2,080.88 SQ.FT.

BALCONY - 196.34 SQ.FT.

TOTAL - 2,277.22 SQ.FT.



011104028

UNIT



List of unit numbers with this unit plan

VIEWS

Downers, Rice At Khan, Creek, Golf Course, waterbody

A806, A808, A1006, A1106, A2006, A2106, A2506, A2606, A3006, A3106, A3506, A4006, A4106, A4506, A4606

Disclaimer: 1. All dimensions are in metric, measured to wall finishes. 2. All materials, dimensions & drawings are approximate. 3. Information is subject to change without notice, at developer's absolute discretion. 4. Actual area may vary from the stated area. 5. Drawing are not to scale. 6. All images used are for illustrative purposes only and do not represent the actual site, features, specifications, fittings and/or fittings. 7. The developer reserves the right to make necessary alterations, at its absolute discretion, without any liability whatsoever.

4 BEDROOM APARTMENT

TYPE A (with store room, maid room and powder room + balcony)

TOTAL SALEABLE AREA
SUITE - 2,080.88 SQ.FT.
BALCONY - 196.34 SQ.FT.
TOTAL - 2,277.22 SQ.FT.

 UNIT



List of unit numbers with this unit plan

VIEWS

Downtown, Ras Al Khaima, Creek, Golf Course, waterbody

A806, A808, A1006, A1106, A2006, A2106, A2206, A2306, A2406, A2506, A2606, A2706, A2806, A2906, A3006, A3106, A3206, A3306, A3406, A3506, A4406, A4506, A4606, A4706

Disclaimer: 1. All dimensions are in metric, measured to wall finishes. 2. All materials, dimensions & drawings are approximate. 3. Information is subject to change without notice, at developer's absolute discretion. 4. Actual area may vary from the stated area. 5. Drawing are not to scale. 6. All images used are for illustrative purposes only and do not represent the actual site, fixtures, specifications, fittings and/or finishes. 7. The developer reserve the right to make necessary/ alterations, at its absolute discretion, without any liability whatsoever.

4 BEDROOM APARTMENT

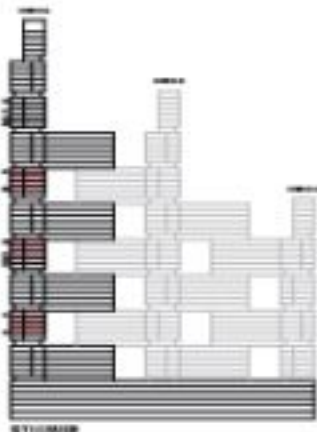
TYPE A (with store room, maid room and powder room + balcony) VARIANT 1

TOTAL SALEABLE AREA

SUITE - 2,080.88 SQ.FT.

BALCONY - 896.34 SQ.FT.

TOTAL - 2,977.22 SQ.FT.



UNIT



List of unit numbers with this unit plan

VIEWS

Downtown, Ras Al Khaym, Creek, Golf Course, water body, Amenities
A1801, A1807, A1803, A1707

Downtown, Ras Al Khaym, Creek, Golf Course, water body
A2701, A2607, A2603, A3601, A3607, A4601, A4607

Disclaimer: 1. All dimensions are in metric, measured to wall finishes. 2. All materials, dimensions & drawings are approximate. 3. Information is subject to change without notice, at developer's absolute discretion. 4. Actual area may vary from the stated area. 5. Drawing are not to scale. 6. All images used are for illustrative purposes only and do not represent the actual site, fixtures, specifications, fittings and/or finishes. 7. The developer reserves the right to make necessary alterations, at its absolute discretion, without any liability whatsoever.

4 BEDROOM APARTMENT

TYPE A (with store room, maid room and powder room + balcony) VARIANT 1

TOTAL SALEABLE AREA

SUITE - 2,080.88 SQ.FT.

BALCONY - 196.34 SQ.FT.

TOTAL - 2,277.22 SQ.FT.

 UNIT



List of unit numbers with this unit plan

VIEWS

Downtown, Ras Al Khaima, Creek, Golf Course, water body, Amenities

A1801, A1807, A1809, A1707

Downtown, Ras Al Khaima, Creek, Golf Course, water body

A1701, A1803, A1805, A1807, A1809, A1809, A1817

Disclaimer: 1. All dimensions are in metric, measured to wall finishes. 2. All materials, dimensions & drawings are approximate. 3. Information is subject to change without notice, at developer's absolute discretion. 4. Actual area may vary from the stated area. 5. Drawing are not to scale. 6. All images used are for illustrative purposes only and do not represent the actual site, fixtures, specifications, fittings and/or finishes. 7. The developer reserve the right to make necessary/ alterations, at its absolute discretion, without any liability whatsoever.

4 BEDROOM APARTMENT

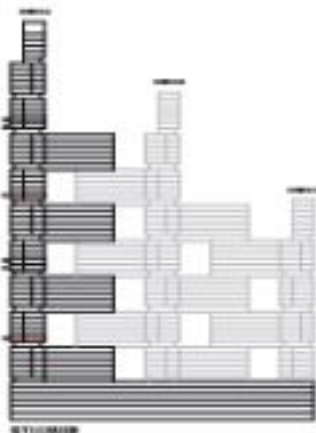
TYPE B (with store room, maid room and powder room + yard)

TOTAL SALEABLE AREA

SUITE - 2,084.43 SQ.FT.

YARD - 477.92 SQ.FT.

TOTAL - 2,562.35 SQ.FT.



01110412B

UNIT



List of unit numbers with this unit plan

VIEWS

Downtown, Rio Al Khor, Creek, Golf Course, water body, Amman
A3307

Downtown, Rio Al Khor, Creek, Golf Course, water body
A3707

Disclaimer: 1. All dimensions are in metric, measured to wall finishes. 2. All materials, dimensions & drawings are approximate. 3. Information is subject to change without notice, at developer's absolute discretion. 4. Actual area may vary from the stated area. 5. Drawing are not to scale. 6. All images used are for illustrative purposes only and do not represent the actual site, features, specifications, fittings and/or finishes. 7. The developer reserves the right to make necessary alterations, at its absolute discretion, without any liability whatsoever.

4 BEDROOM APARTMENT

TYPE B (with store room, maid room and powder room + yard)

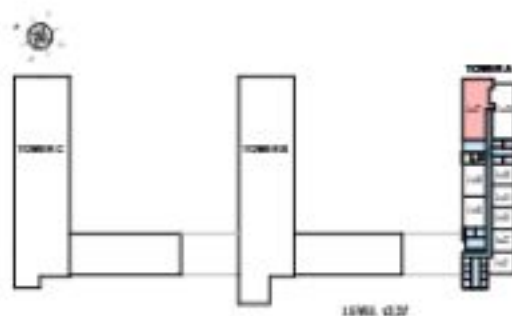
TOTAL SALEABLE AREA

SUITE - 2,084.43 SQ.FT.

YARD - 477.92 SQ.FT.

TOTAL - 2,562.35 SQ.FT.

 UNIT



List of unit numbers with this unit plan

VIEWS

Downtown, Ras Al Khaima, Creek, Golf Course, water body, Amenities
A2307

Downtown, Ras Al Khaima, Creek, Golf Course, water body
A23707

Disclaimer: 1. All dimensions are in metric, measured to wall finishes. 2. All materials, dimensions & drawings are approximate. 3. Information is subject to change without notice, at developer's absolute discretion. 4. Actual area may vary from the stated area. 5. Drawing are not to scale. 6. All images used are for illustrative purposes only and do not represent the actual site, features, specifications, fittings and/or finishes. 7. The developer reserves the right to make necessary/alterations, at its absolute discretion, without any liability whatsoever.

4 BEDROOM APARTMENT

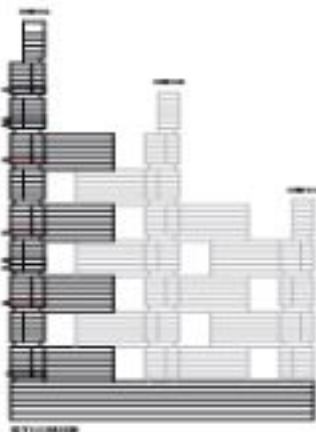
TYPE B (with store room, maid room and powder room + yard) VARIANT 1

TOTAL SALEABLE AREA

SUITE - 2,084.43 SQ.FT.

YARD - 477.32 SQ.FT.

TOTAL - 2,562.35 SQ.FT.



01100000

UNIT



List of unit numbers with this unit plan

VIEWS

Downtown, Ras Al Khaima, Creek, Golf Course, waterbody
AKSC, A 200, A-4000

Disclaimer: 1. All dimensions are in metric, measured to wall finishes. 2. All materials, dimensions & drawings are approximate. 3. Information is subject to change without notice, at developer's absolute discretion. 4. Actual area may vary from the stated area. 5. Drawing are not to scale. 6. All images used are for illustrative purposes only and do not represent the actual site, features, specifications, fittings and/or finishes. 7. The developer reserves the right to make necessary/alterations, at its absolute discretion, without any liability whatsoever.

4 BEDROOM APARTMENT

TYPE B (with store room, maid room and powder room + yard) VARIANT 1

TOTAL SALEABLE AREA

SUITE - 2,084.43 SQ.FT.

YARD - 477.32 SQ.FT.

TOTAL - 2,562.35 SQ.FT.

UNIT



List of unit numbers with this unit plan

VEWS

Downtown, Ras Al Khaima, Creek Golf Course, waterbody
A300, A301, A400

Disclaimer: 1. All dimensions are in metric, measured to wall finishes. 2. All materials, dimensions & drawings are approximate. 3. Information is subject to change without notice, at developer's absolute discretion. 4. Actual area may vary from the stated area. 5. Drawing are not to scale. 6. All images used are for illustrative purposes only and do not represent the actual site, features, specifications, fittings and/or finishes. 7. The developer reserves the right to make necessary alterations, at its absolute discretion, without any liability whatsoever.

2 BEDROOM DUPLEX APARTMENT

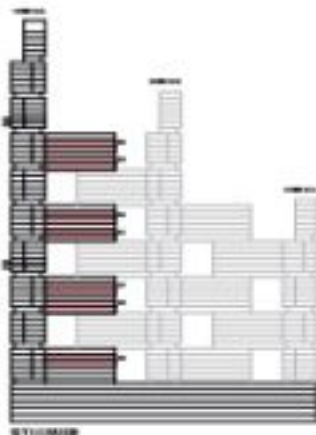
TYPE A (with store room, maid room and powder room + balcony)

TOTAL SALEABLE AREA

SUITE - 1,704.76 SQ.FT.

BALCONY - 179.96 SQ.FT.

TOTAL - 1,884.72 SQ.FT.



UNIT



List of unit numbers with this unit plan

VIEWS

Box A/R/R, Golf Course, Amenities
A314, A314, A314

Box A/R/R, Golf Course
A314, A314, A314, A314

Disclaimer: 1. All dimensions are in metric, measured to wall finishes. 2. All materials, dimensions & drawings are approximate. 3. Information is subject to change without notice, at developer's absolute discretion. 4. Actual area may vary from the stated area. 5. Drawing are not to scale. 6. All images used are for illustrative purposes only and do not represent the actual site, fixtures, specifications, fittings and/or fittings. 7. The developer reserves the right to make necessary/alterations, at its absolute discretion, without any liability whatsoever.

2 BEDROOM DUPLEX APARTMENT

TYPE A (with store room, maid room and powder room + balcony)

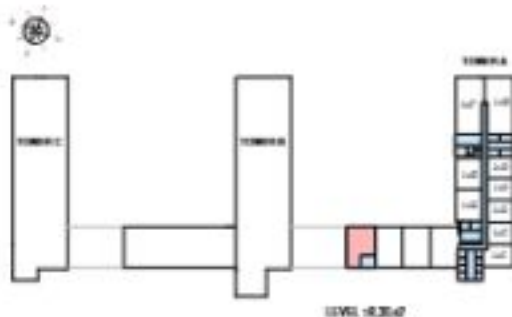
TOTAL SALEABLE AREA

SUITE - 1,704.76 SQ.FT.

BALCONY - 179.96 SQ.FT.

TOTAL - 1,884.72 SQ.FT.

 UNIT



List of unit numbers with this unit plan

VEWS

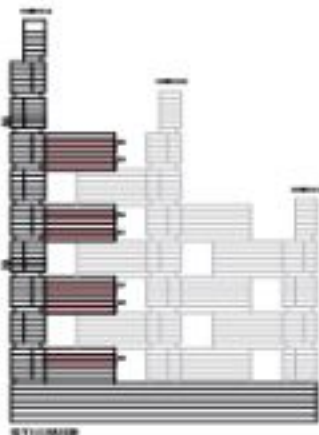
Box A1100, Golf Course, Amenities
A1014, A1014, A2014

Box A1100, Golf Course
A2014, A3014, A4014, A4014

Disclaimer: 1. All dimensions are in metric, measured to wall finishes. 2. All materials, dimensions & drawings are approximate. 3. Information is subject to change without notice, at developer's absolute discretion. 4. Actual area may vary from the stated area. 5. Drawing are not to scale. 6. All images used are for illustrative purposes only and do not represent the actual site, fixtures, specifications, fittings and/or materials. 7. The developer reserve the right to make necessary/alterations, at its absolute discretion, without any liability whatsoever.

4 BEDROOM DUPLEX APARTMENT
TYPE A (with maid room and powder room + balcony)

TOTAL SALEABLE AREA
 SUITE - 2,176.53 SQ.FT.
 BALCONY - 176.25 SQ.FT.
TOTAL - 2,352.78 SQ.FT.



011010108

UNIT



List of unit numbers with this unit plan

VIEWS

Star A/River, Golf Course, Amenities
 A10D, A10E, A10F

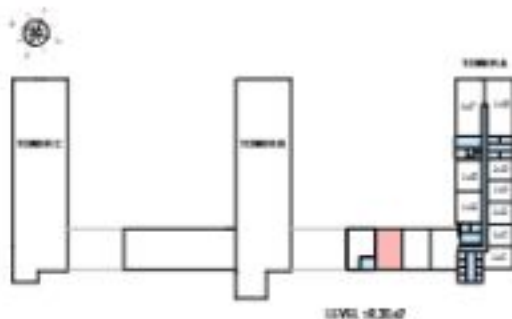
Star A/River, Golf Course
 A31D, A31E, A31F, A40D

Disclaimer: 1. All dimensions are in metric, measured to wall finishes. 2. All materials, dimensions & drawings are approximate. 3. Information is subject to change without notice, at developer's absolute discretion. 4. Actual area may vary from the stated area. 5. Drawing are not to scale. 6. All images used are for illustrative purposes only and do not represent the actual site, features, specifications, fittings and/or settings. 7. The developer reserves the right to make necessary/alterations, at its absolute discretion, without any liability whatsoever.

4 BEDROOM DUPLEX APARTMENT
TYPE A (with maid room and powder room + balcony)

TOTAL SALEABLE AREA
 SUITE - 2,176.53 SQ.FT.
 BALCONY - 176.25 SQ.FT.
 TOTAL - 2,352.78 SQ.FT.

 UNIT



List of unit numbers with this unit plan

VEWS

See A/R/Roe, Golf Course, Amenities
 A10D, A10E, A10F

See A/R/Roe, Golf Course
 A10D, A10E, A10F, A10G

Disclaimer: 1. All dimensions are in metric, measured to wall finishes. 2. All materials, dimensions & drawings are approximate. 3. Information is subject to change without notice, at developer's absolute discretion. 4. Actual area may vary from the stated area. 5. Drawing are not to scale. 6. All images used are for illustrative purposes only and do not represent the actual site, fixtures, specifications, fittings and/or materials. 7. The developer reserve the right to make necessary/alterations, at its absolute discretion, without any liability whatsoever.

4 BEDROOM DUPLEX APARTMENT

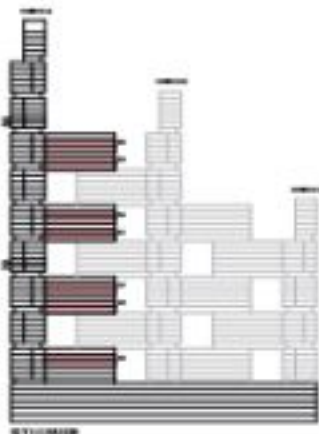
TYPE A (with maid room and powder room + balcony) VARIANT 1

TOTAL SALEABLE AREA

SUITE - 2,172.85 SQ.FT.

BALCONY - 176.25 SQ.FT.

TOTAL - 2,349.10 SQ.FT.



011100000

UNIT



List of unit numbers with this unit plan

VEWS

Sea, Al Khair, Golf Course, Ammanias
A106, A108, A109

Sea, Al Khair, Golf Course
A106, A108, A109, A109

Disclaimer: 1. All dimensions are in metric, measured to wall finishes. 2. All materials, dimensions & drawings are approximate. 3. Information is subject to change without notice, at developer's absolute discretion. 4. Actual area may vary from the stated area. 5. Drawing are not to scale. 6. All images used are for illustrative purposes only and do not represent the actual site, fixtures, specifications, fittings and/or fittings. 7. The developer reserve the right to make necessary/alterations, at its absolute discretion, without any liability whatsoever.

4 BEDROOM DUPLEX APARTMENT

TYPE A (with maid room and powder room + balcony) VARIANT 1

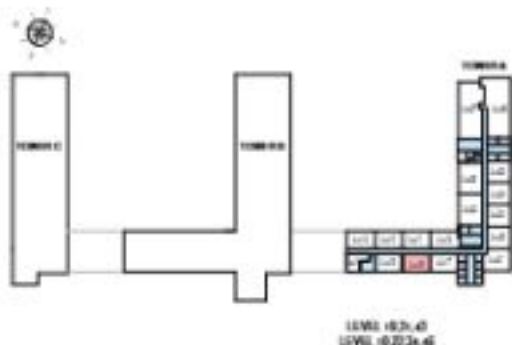
TOTAL SALEABLE AREA

SUITE - 2,072.85 SQ.FT.

BALCONY - 176.25 SQ.FT.

TOTAL - 2,349.10 SQ.FT.

UNIT



List of unit numbers with this unit plan

VEWS

See A100a, Golf Course, Amenities
A100, A100a, A100b

See A100a, Golf Course
A100, A100a, A100b, A100c

Disclaimer: 1. All dimensions are in metric, measured to wall finishes. 2. All materials, dimensions & drawings are approximate. 3. Information is subject to change without notice, at developer's absolute discretion. 4. Actual area may vary from the stated area. 5. Drawing are not to scale. 6. All images used are for illustrative purposes only and do not represent the actual site, fixtures, specifications, fittings and/or materials. 7. The developer may use the right to make necessary/alterations, at its absolute discretion, without any liability whatsoever.

4 BEDROOM DUPLEX APARTMENT

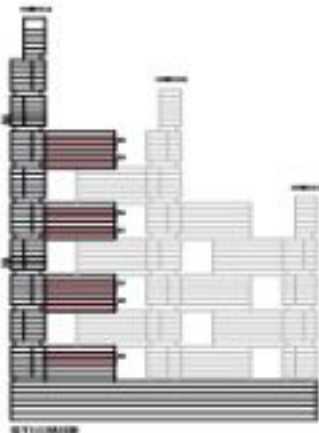
TYPE A1 (with maid room and powder room + balcony)

TOTAL SALEABLE AREA

SUITE - 2,227.74 SQ.FT.

BALCONY - 173.33 SQ.FT.

TOTAL - 2,401.07 SQ.FT.



0111-00000



LOW LEVEL

List of unit numbers with this unit plan

VEWS

Star A/R/Roe, Golf Course, Americas
A311, A341, A321

Star A/R/Roe, Golf Course
A311, A341, A321, A401

Disclaimer: 1. All dimensions are in metric, measured to wall finishes. 2. All materials, dimensions & drawings are approximate. 3. Information is subject to change without notice, at developer's absolute discretion. 4. Actual area may vary from the stated area. 5. Drawing are not to scale. 6. All images used are for illustrative purposes only and do not represent the actual site, features, specifications, fittings and/or finishes. 7. The developer reserve the right to make necessary/alter others, at its absolute discretion, without any liability whatsoever.

4 BEDROOM DUPLEX APARTMENT
TYPE A1 (with maid room and powder room + balcony)

TOTAL SALEABLE AREA
SUITE - 2,227.74 SQ.FT.
BALCONY - 173.33 SQ.FT.
TOTAL - 2,401.07 SQ.FT.

 UNIT



List of unit numbers with this unit plan

VEWS

Box A100a, Golf Course, Amenities
A101, A102, A2017

Box A100a, Golf Course
A311, A3407, A4017, A4027

Disclaimer: 1. All dimensions are in metric, measured to wall finishes. 2. All materials, dimensions & drawings are approximate. 3. Information is subject to change without notice, at developer's absolute discretion. 4. Actual area may vary from the stated area. 5. Drawing are not to scale. 6. All images used are for illustrative purposes only and do not represent the actual site, fixtures, specifications, fittings and/or materials. 7. The developer may use the right to make necessary/alterations, at its absolute discretion, without any liability whatsoever.

TOWER B
UNIT PLAN LAYOUTS

1 BEDROOM APARTMENT

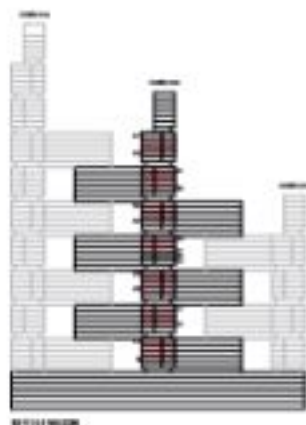
TYPE D (with balcony)

TOTAL SALEABLE AREA

SUITE - 490.21 SQ.F.T.

BALCONY - 49.51 SQ.F.T.

TOTAL - 539.72 SQ.F.T.



8711/8712



List of unit numbers with this unit plan

VIEWS

Sea Al Khay, Golf Course, Amman
8806, 8906, 9106, 9306, 9406, 9506, 9606, 9706, 9806, 9906, 10106, 10206, 10306

Sea Al Khay, Golf Course, Water Body
87706, 87806, 87906, 88206, 88306, 88406, 88506

Sea Al Khay, Golf Course
82806, 82906, 8406, 8416, 84406, 84506, 84606

Disclaimer: 1. All dimensions are in metric, measured to wall finishes. 2. All materials, dimensions & drawings are approximate. 3. Information is subject to change without notice, at developer's absolute discretion. 4. Actual area may vary from the stated area. 5. Drawing are not to scale. 6. All images used are for illustrative purposes only and do not represent the actual site, fixtures, specifications, fittings and/or finishes. 7. The developer reserve the right to make necessary/alterations, at its absolute discretion, without any liability whatsoever.

1 BEDROOM APARTMENT

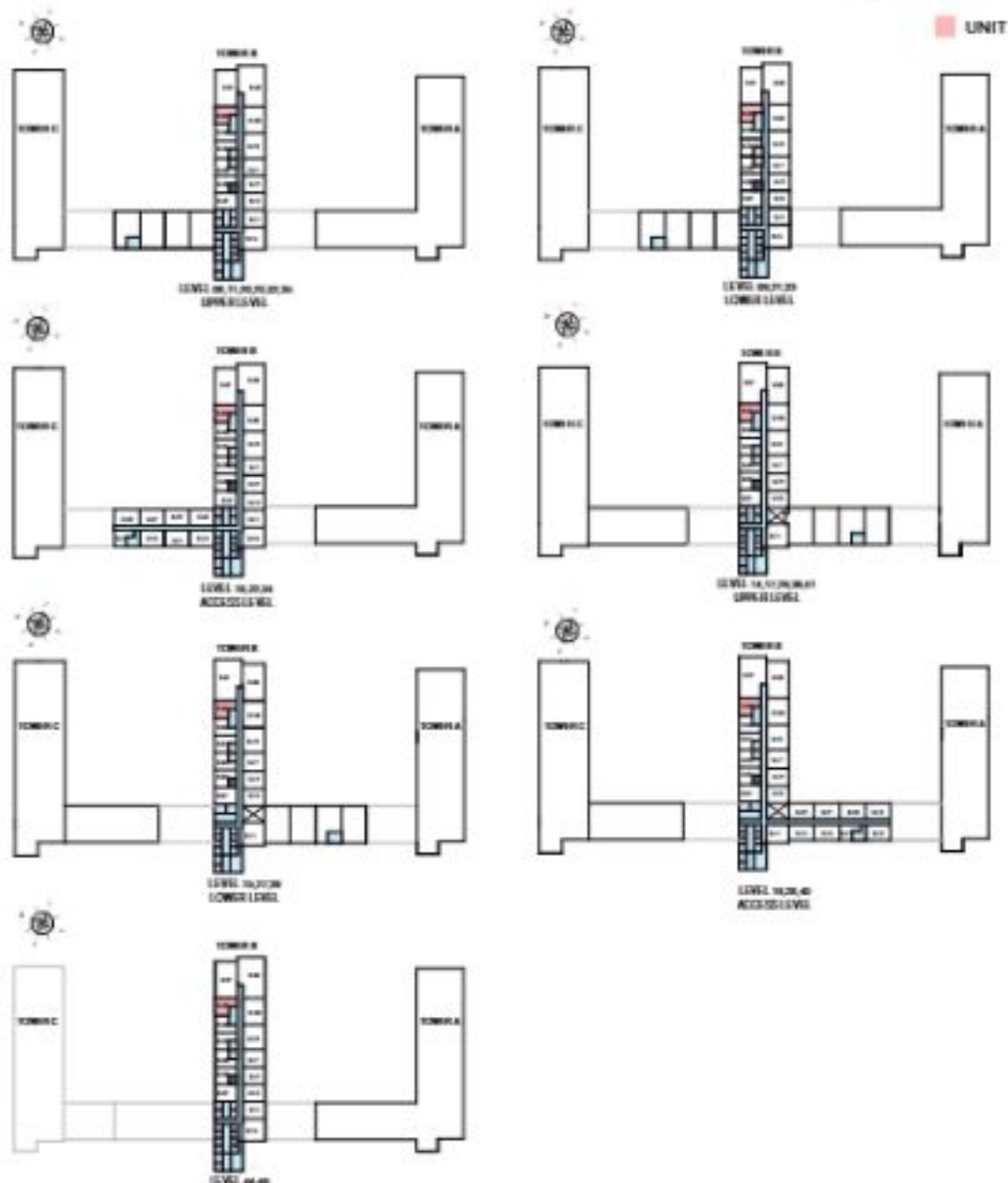
TYPE D (with balcony)

TOTAL SALEABLE AREA

SUITE - 490.21 SQ.FT.

BALCONY - 49.51 SQ.FT.

TOTAL - 539.72 SQ.FT.



List of unit numbers with this unit plan:

VIEWS

Sea Al Khay, Golf Course, Amman

8106, 8206, 8306, 8406, 8506, 8606, 8706, 8806, 8906, 9006, 9106, 9206, 9306, 9406

Sea Al Khay, Golf Course, Water Body

8706, 87806, 87906, 88706, 88806, 89406, 89506

Sea Al Khay, Golf Course

82806, 82906, 8406, 84806, 84906, 85806, 8606

Disclaimer: 1. All dimensions are in metric, measured to wall finishes. 2. All materials, dimensions & drawings are approximate. 3. Information is subject to change without notice, at developer's absolute discretion. 4. Actual area may vary from the stated area. 5. Drawing are not to scale. 6. All images used are for illustrative purposes only and do not represent the actual site, fixtures, specifications, fittings and/or fittings. 7. The developer reserve the right to make necessary alterations, at its absolute discretion, without any liability whatsoever.

1 BEDROOM APARTMENT

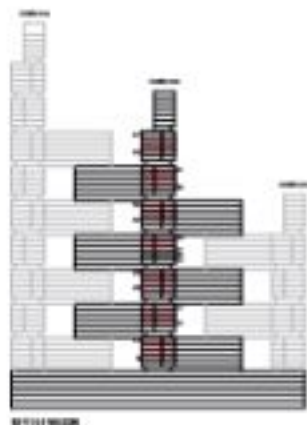
TYPE D (with balcony) VARIANT 1

TOTAL SALEABLE AREA

SUITE - 491.58 SQ.FT.

BALCONY - 46.05 SQ.FT.

TOTAL - 537.63 SQ.FT.



01/11/2020

UNIT



List of unit numbers with this unit plan:

VIEWS

Sea Al Khay, Golf Course, Amman

0805, 0905, 08005, 0805, 08405, 08505, 08605, 08705, 087005, 08765, 087005, 087005

Sea Al Khay, Golf Course, Water Body

08705, 087005, 087005, 08705, 08705, 08705, 08705

Sea Al Khay, Golf Course

02805, 02805, 04005, 04005, 04405, 04405, 04405

Disclaimer: 1. All dimensions are in metric, measured to wall finishes. 2. All materials, dimensions & drawings are approximate. 3. Information is subject to change without notice, at developer's absolute discretion. 4. Actual area may vary from the stated area. 5. Drawing are not to scale. 6. All images used are for illustrative purposes only and do not represent the actual site, fixtures, specifications, fittings and/or settings. 7. The developer reserves the right to make necessary alterations, at its absolute discretion, without any liability whatsoever.

1 BEDROOM APARTMENT

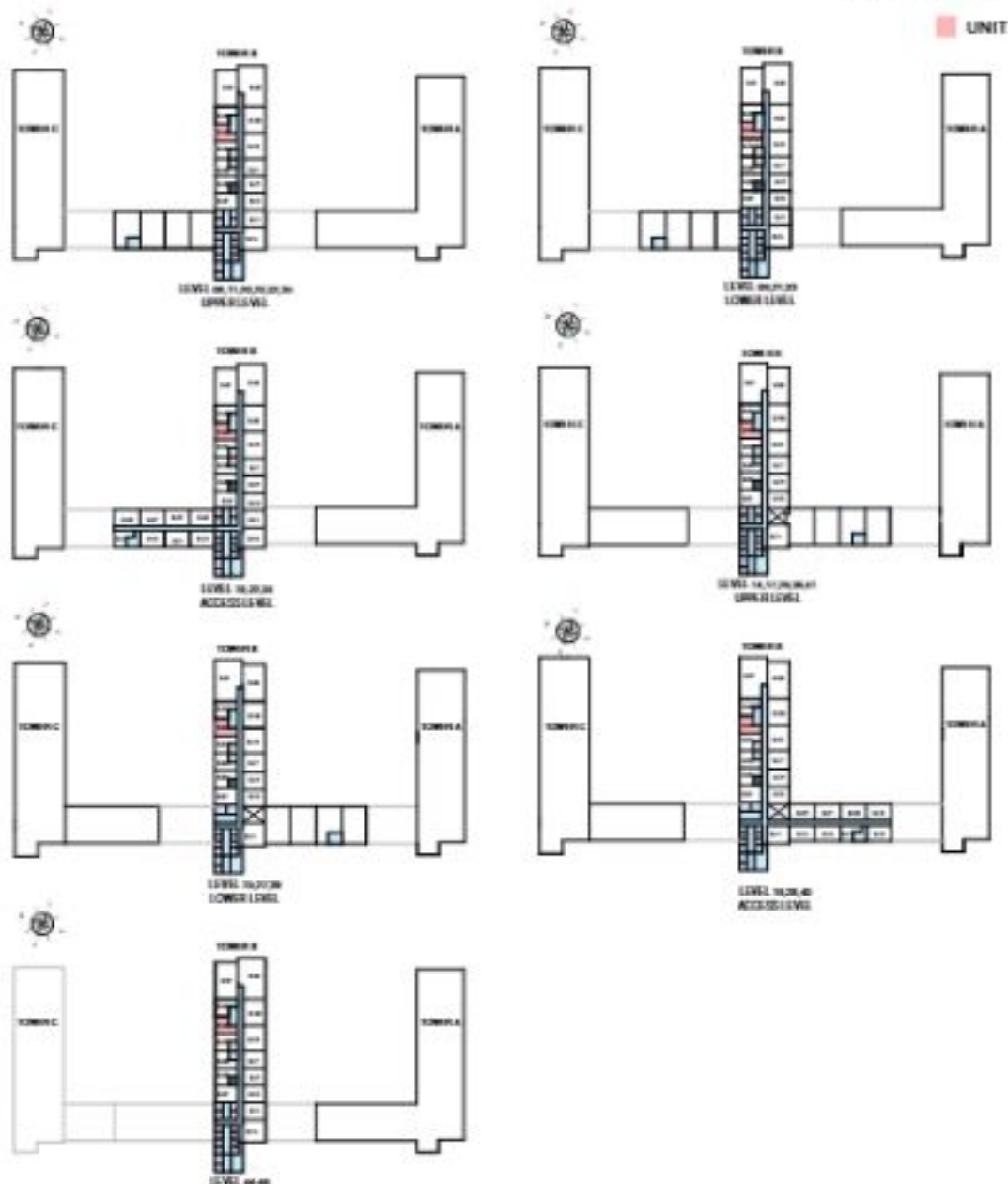
TYPE D (with balcony) VARIANT 1

TOTAL SALEABLE AREA

SUITE - 491.58 SQ.FT.

BALCONY - 46.05 SQ.FT.

TOTAL - 537.63 SQ.FT.



List of unit numbers with this unit plan:

VIEWS

Sea Al Khay, Golf Course, Amman

0805, 0905, 08005, 0805, 08405, 08005, 08005, 08705, 08005, 08705, 08705, 08205

Sea Al Khay, Golf Course, Water Body

08705, 08905, 08905, 08205, 08305, 08405, 08505

Sea Al Khay, Golf Course

08905, 08905, 08405, 08405, 08405, 08405, 08405

Disclaimer: 1. All dimensions are in metric, measured to wall finishes. 2. All materials, dimensions & drawings are approximate. 3. Information is subject to change without notice, at developer's absolute discretion. 4. Actual area may vary from the stated area. 5. Drawing are not to scale. 6. All images used are for illustrative purposes only and do not represent the actual site, fixtures, specifications, fittings and/or fittings. 7. The developer reserve the right to make necessary alterations, at its absolute discretion, without any liability whatsoever.

1 BEDROOM APARTMENT

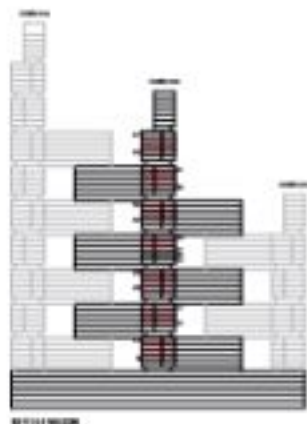
TYPE E (with balcony)

TOTAL SALEABLE AREA

SUITE - 503.94 SQ.FT.

BALCONY - 45.08 SQ.FT.

TOTAL - 549.02 SQ.FT.



8111/8108

UNIT



List of unit numbers with this unit plan:

VIEWS

Ras Al Khay, Amman
8803, 8903, 8903

Ras Al Khay, Golf Course, Amman
81903, 81403, 81503, 81603, 81700, 82003, 82103, 82203, 82303

Ras Al Khay, Golf Course, Water Body
82703, 82803, 82903, 83003, 83103, 83203, 83303, 83403, 83503

Ras Al Khay, Golf Course
83603, 83703, 84003, 84103, 84403, 84503, 84603

Disclaimer: 1. All dimensions are in metric, measured to wall finishes. 2. All materials, dimensions & drawings are approximate. 3. Information is subject to change without notice, at developer's absolute discretion. 4. Actual area may vary from the stated area. 5. Drawing are not to scale. 6. All images used are for illustrative purposes only and do not represent the actual site, fixtures, specifications, fittings and/or settings. 7. The developer reserve the right to make necessary/alterations, at its absolute discretion, without any liability whatsoever.

1 BEDROOM APARTMENT

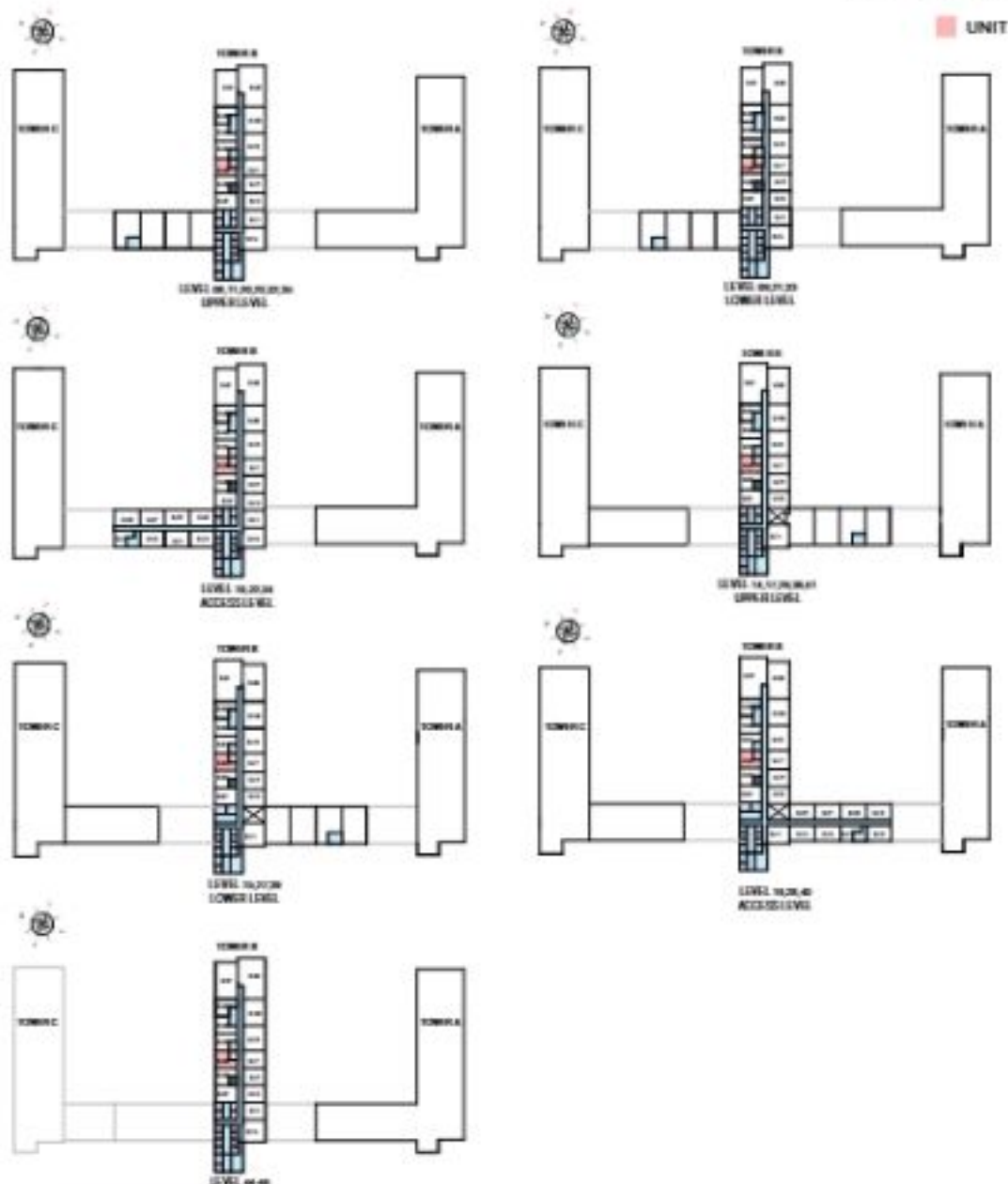
TYPE E (with balcony)

TOTAL SALEABLE AREA

SUITE - 503.94 SQ.FT.

BALCONY - 45.08 SQ.FT.

TOTAL - 549.02 SQ.FT.



List of unit numbers with this unit plan:

VEWS

Ras Al Khay, Amman
08003, 09003, 08002

Ras Al Khay, Golf Course, Amman
09103, 09403, 09503, 09603, 09703, 09803, 09903, 09203, 09303, 09202

Ras Al Khay, Golf Course, Water Body
02703, 02903, 02902, 02702, 02303, 02403, 02503

Ras Al Khay, Golf Course
02803, 02902, 04003, 04103, 04403, 04503, 04603

Disclaimer: 1. All dimensions are in metric, measured to wall finishes. 2. All materials, dimensions & drawings are approximate. 3. Information is subject to change without notice, at developer's absolute discretion. 4. Actual area may vary from the stated area. 5. Drawing are not to scale. 6. All images used are for illustrative purposes only and do not represent the actual site, fixtures, specifications, fittings and/or materials. 7. The developer reserves the right to make necessary alterations, at its absolute discretion, without any liability whatsoever.

1 BEDROOM APARTMENT

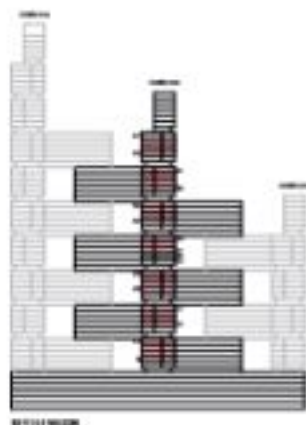
TYPE E (with balcony) VARIANT 1

TOTAL SALEABLE AREA

SUITE - 503.04 SQ.FT.

BALCONY - 45.08 SQ.FT.

TOTAL - 548.02 SQ.FT.



01/11/2020

UNIT



List of unit numbers with this unit plan:

VIEWS

Sea At/Khor, Amman
01012, 01002, 01007

Sea At/Khor, Golf Course, Amman
01102, 01402, 01502, 01602, 01702, 01802, 01902, 02002, 02102

Sea At/Khor, Golf Course

02702, 02802, 02902, 03002, 03102, 03202, 03302, 03402, 03502, 03602, 03702, 03802, 03902, 04002, 04102, 04202, 04302, 04402

Disclaimer: 1. All dimensions are in metric, measured to wall finishes. 2. All materials, dimensions & drawings are approximate. 3. Information is subject to change without notice, at developer's absolute discretion. 4. Actual area may vary from the stated area. 5. Drawing are not to scale. 6. All images used are for illustrative purposes only and do not represent the actual site, fixtures, specifications, fittings and/or finishes. 7. The developer reserve the right to make necessary/alterations, at its absolute discretion, without any liability whatsoever.

1 BEDROOM APARTMENT

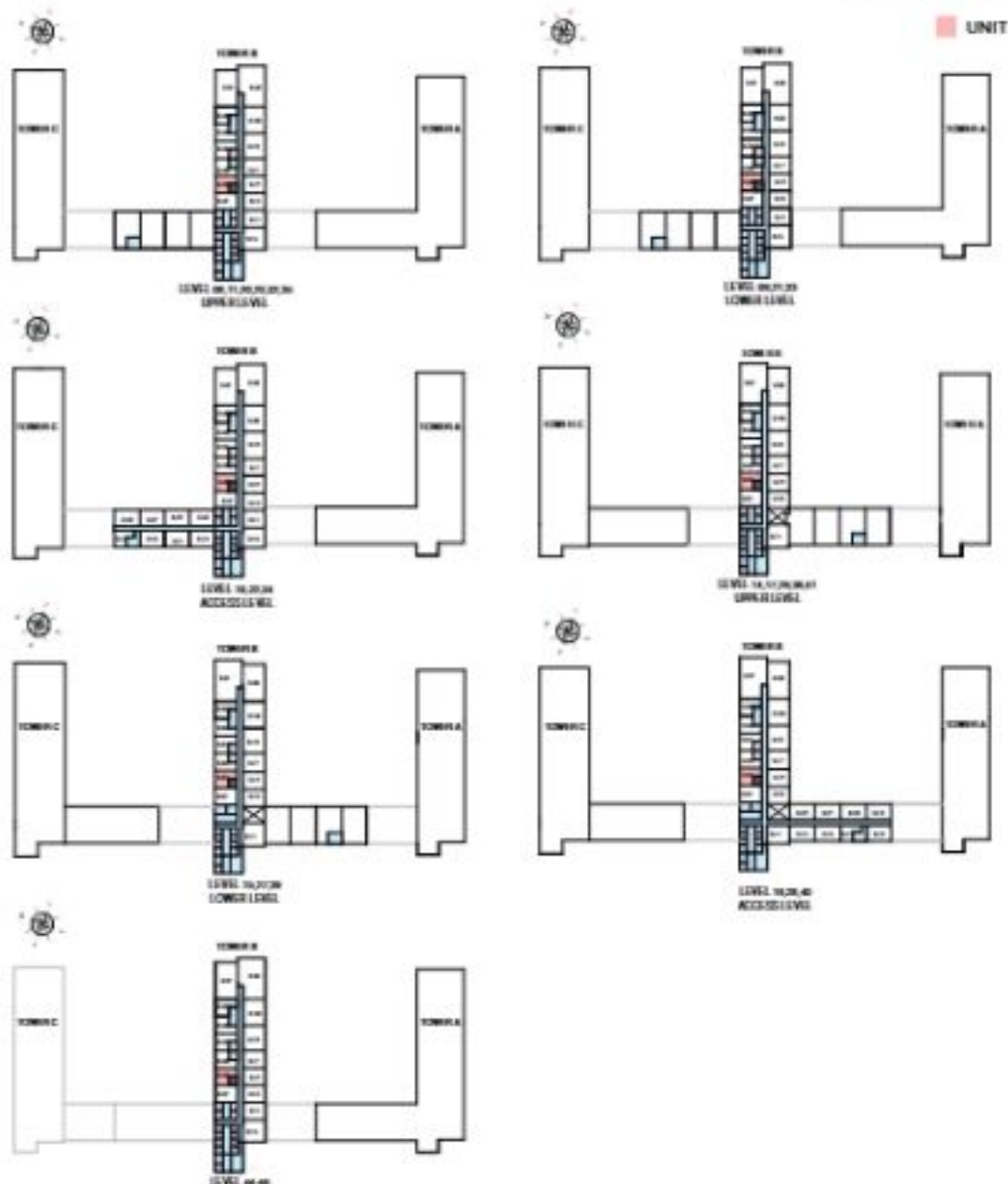
TYPE E (with balcony) VARIANT 1

TOTAL SALEABLE AREA

SUITE - 503.94 SQ.FT.

BALCONY - 45.08 SQ.FT.

TOTAL - 549.02 SQ.FT.



List of unit numbers with this unit plan:

VIEWS

Sea At/Khor, Amman
B0107, B0607, B1007

Sea At/Khor, Golf Course, Amman
B0102, B1402, B1502, B1602, B1702, B2002, B2102, B2202, B2302

Sea At/Khor, Golf Course

B2702, B2902, B2907, B3202, B3302, B3402, B3502, B3802, B3902, B4002, B4102, B4402, B4502, B4602

Disclaimer: 1. All dimensions are in metric, measured to wall finishes. 2. All materials, dimensions & drawings are approximate. 3. Information is subject to change without notice, at developer's absolute discretion. 4. Actual area may vary from the stated area. 5. Drawing are not to scale. 6. All images used are for illustrative purposes only and do not represent the actual site, fixtures, specifications, fittings and/or fittings. 7. The developer reserves the right to make necessary alterations, at its absolute discretion, without any liability whatsoever.

1 BEDROOM APARTMENT

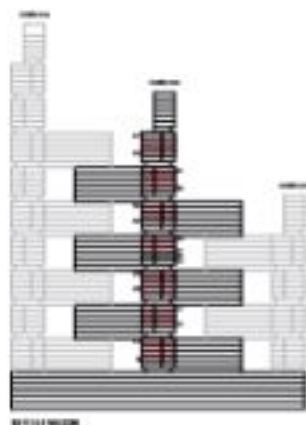
TYPE F (with balcony)

TOTAL SALEABLE AREA

SUITE - 508.06 SQ.FT.

BALCONY - 45.35 SQ.FT.

TOTAL - 553.41 SQ.FT.



01/11/2020

UNIT



List of unit numbers with this unit plan:

VIEWS

Ras Al Khair, Amman
0104, 0204, 0304

Ras Al Khair, Golf Course, Amman
0114, 0144, 0154, 0164, 0174, 0184, 0194, 0204, 0214, 0224, 0234

Ras Al Khair, Golf Course, White Sky
0274, 0284, 0294, 0304, 0314, 0324, 0334, 0344, 0354

Ras Al Khair, Golf Course
0364, 0394, 0404, 0414, 0444, 0454, 0464

Disclaimer: 1. All dimensions are in metric, measured to wall finishes. 2. All materials, dimensions & drawings are approximate. 3. Information is subject to change without notice, at developer's absolute discretion. 4. Actual area may vary from the stated area. 5. Drawing are not to scale. 6. All images used are for illustrative purposes only and do not represent the actual site, fixtures, specifications, fittings and/or finishes. 7. The developer reserves the right to make necessary alterations, at its absolute discretion, without any liability whatsoever.

1 BEDROOM APARTMENT

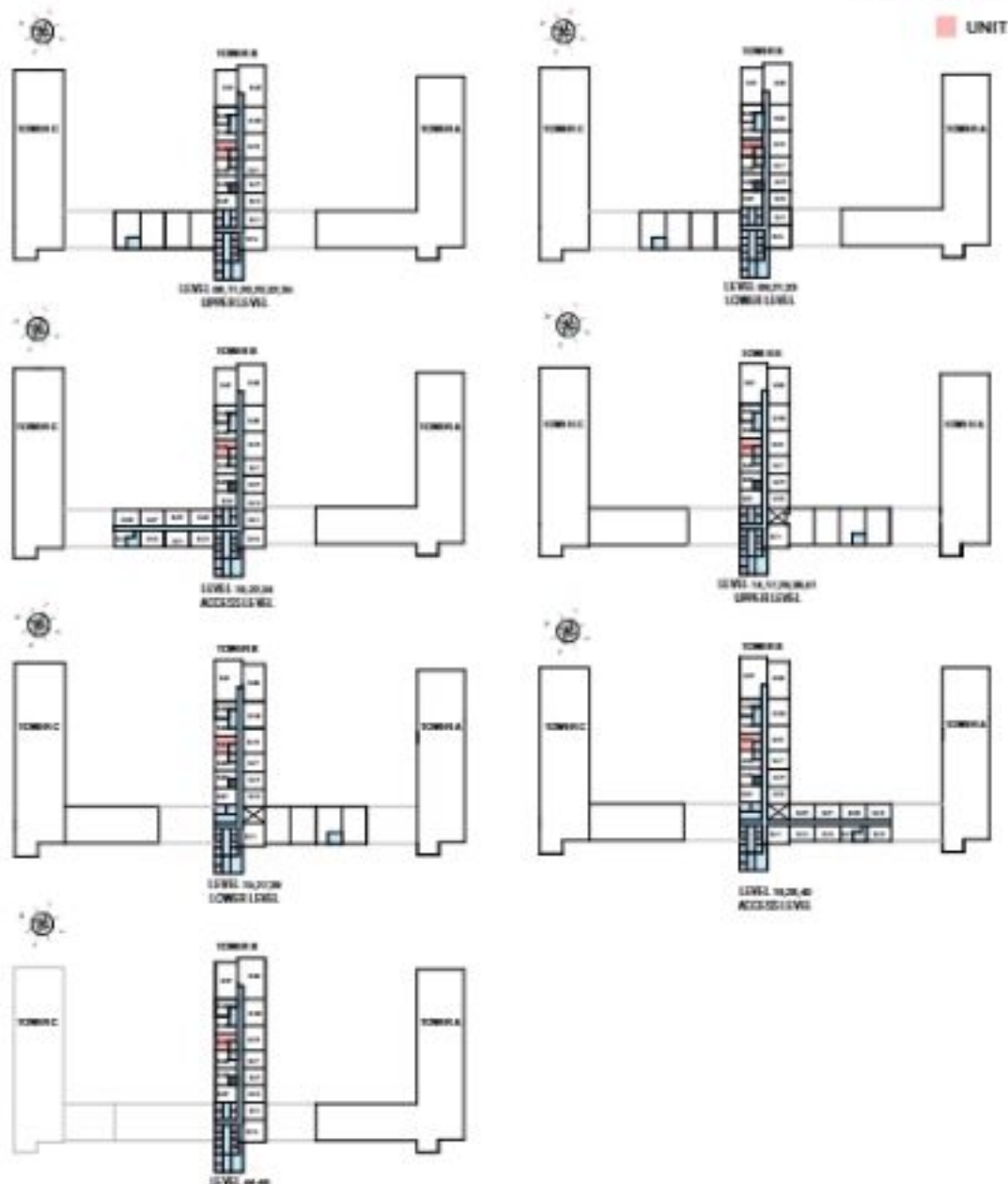
TYPE F (with balcony)

TOTAL SALEABLE AREA

SUITE - 508.06 SQ.FT.

BALCONY - 45.35 SQ.FT.

TOTAL - 553.41 SQ.FT.



List of unit numbers with this unit plan:

VIEWS

Ras Al Khair, Amman
B104, B204, B304

Ras Al Khair, Golf Course, Amman
B1104, B1404, B1504, B1604, B1704, B1804, B1904, B2104, B2204, B2304

Ras Al Khair, Golf Course, White Lady
B2704, B2804, B2904, B3004, B3104, B3204, B3304, B3404, B3504

Ras Al Khair, Golf Course
B3604, B3904, B4004, B4104, B4404, B4504, B4604

Disclaimer: 1. All dimensions are in metric, measured to wall finishes. 2. All materials, dimensions & drawings are approximate. 3. Information is subject to change without notice, at developer's absolute discretion. 4. Actual area may vary from the stated area. 5. Drawing are not to scale. 6. All images used are for illustrative purposes only and do not represent the actual site, fixtures, specifications, fittings and/or fittings. 7. The developer reserves the right to make necessary alterations, at its absolute discretion, without any liability whatsoever.

1 BEDROOM APARTMENT

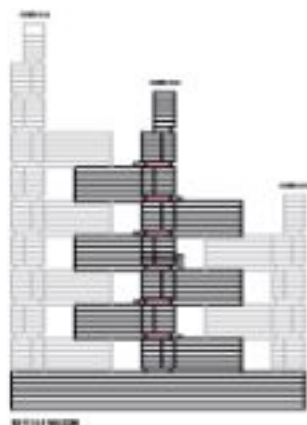
TYPE G (with yard)

TOTAL SALEABLE AREA

SUITE - 452.24 SQ.F.T.

YARD - 119.05 SQ.F.T.

TOTAL - 571.29 SQ.F.T.



8/11/2020

UNIT



List of unit numbers with this unit plan

VIEWS

0101, 0102
0103, 0104

0105, 0106
0107, 0108

0109, 0110
0111, 0112

0113, 0114
0115, 0116

Disclaimer: 1. All dimensions are in metric, measured to wall finishes. 2. All materials, dimensions & drawings are approximate. 3. Information is subject to change without notice, at developer's absolute discretion. 4. Actual area may vary from the stated area. 5. Drawing are not to scale. 6. All images used are for illustrative purposes only and do not represent the actual site, features, specifications, fittings and/or finishes. 7. The developer may use the right to make necessary alterations, at its absolute discretion, without any liability whatsoever.

1 BEDROOM APARTMENT

TYPE G (with yard)

TOTAL SALEABLE AREA

SUITE - 482.24 SQ.FT.

YARD - 119.05 SQ.FT.

TOTAL - 601.29 SQ.FT.

UNIT



List of unit numbers with this unit plan

VIEWS

Sea Alkhor, Golf Course, Ammaniac
1200, 8100

Sea Alkhor, Golf Course, Ammaniac, Water Body
2400

Sea Alkhor, Golf Course, Water Body
3000, 3000

Sea Alkhor, Golf Course
4700

Disclaimer: 1. All dimensions are in metric, measured to wall finishes. 2. All materials, dimensions & drawings are approximate. 3. Information is subject to change without notice, at developer's absolute discretion. 4. Actual area may vary from the stated area. 5. Drawing are not to scale. 6. All images used are for illustrative purposes only and do not represent the actual site, features, specifications, fittings and/or finishes. 7. The developer reserves the right to make necessary/alterations, at its absolute discretion, without any liability whatsoever.

1 BEDROOM APARTMENT

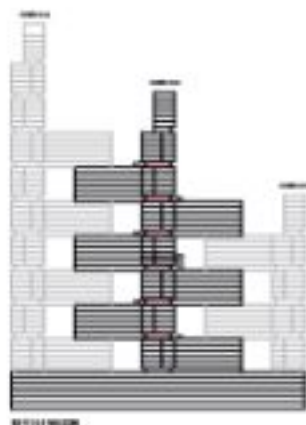
TYPE G (with yard) VARIANT 1

TOTAL SALEABLE AREA

SUITE - 483.39 SQ.F.T.

YARD - 119.05 SQ.F.T.

TOTAL - 602.44 SQ.F.T.



8111/8128

UNIT



List of unit numbers with this unit plan

VIEWS

Sea, Al Khbar, Golf Course, Amenities
81205, 81805

Sea, Al Khbar, Golf Course, Amenities, Water Body
81405

Sea, Al Khbar, Golf Course, Water Body
81305, 81805

Sea, Al Khbar, Golf Course
81705

Disclaimer: 1. All dimensions are in metric, measured to wall finishes. 2. All materials, dimensions & drawings are approximate. 3. Information is subject to change without notice, at developer's absolute discretion. 4. Actual area may vary from the stated area. 5. Drawing are not to scale. 6. All images used are for illustrative purposes only and do not represent the actual site, fixtures, specifications, fittings and/or finishes. 7. The developer reserves the right to make necessary/alterations, at its absolute discretion, without any liability whatsoever.

1 BEDROOM APARTMENT

TYPE G (with yard) VARIANT 1

TOTAL SALEABLE AREA

SUITE - 483.39 SQ.FT.

YARD - 119.05 SQ.FT.

TOTAL - 602.44 SQ.FT.

UNIT



List of unit numbers with this unit plan

VIEWS

Has Al Khair, Golf Course, Amenities
S205, S205

Has Al Khair, Golf Course, Amenities, Water Body
S2405

Has Al Khair, Golf Course, Water Body
S2005, S2005

Has Al Khair, Golf Course
S405

Disclaimer: 1. All dimensions are in metric, measured to wall finishes. 2. All materials, dimensions & drawings are approximate. 3. Information is subject to change without notice, at developer's absolute discretion. 4. Actual area may vary from the stated area. 5. Drawing are not to scale. 6. All images used are for illustrative purposes only and do not represent the actual site, features, specifications, fittings and/or finishes. 7. The developer reserves the right to make necessary/alterations, at its absolute discretion, without any liability whatsoever.

1 BEDROOM APARTMENT

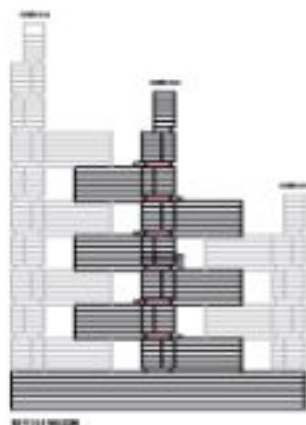
TYPE H (with yard)

TOTAL SALEABLE AREA

SUITE - 408.04 SQ.F.T.

YARD - 115.17 SQ.F.T.

TOTAL - 523.21 SQ.F.T.



01/11/2020

UNIT



List of unit numbers with this unit plan

VIEWS

See AI/Kher, Golf Course, Amenities
02003, 02003

See AI/Kher, Golf Course, Amenities, Water Body
021403

See AI/Kher, Golf Course, Water Body
023003

See AI/Kher, Golf Course
042003

Disclaimer: 1. All dimensions are in metric, measured to wall finishes. 2. All materials, dimensions & drawings are approximate. 3. Information is subject to change without notice, at developer's absolute discretion. 4. Actual area may vary from the stated area. 5. Drawing are not to scale. 6. All images used are for illustrative purposes only and do not represent the actual site, features, specifications, fittings and/or settings. 7. The developer reserve the right to make necessary/alterations, at its absolute discretion, without any liability whatsoever.

1 BEDROOM APARTMENT

TYPE H (with yard)

TOTAL SALEABLE AREA

SUITE - 408.04 SQ.FT.

YARD - 115.17 SQ.FT.

TOTAL - 523.21 SQ.FT.

 UNIT



List of unit numbers with this unit plan

VIEWS

See AI/Kher, Golf Course, Amenities
0200, 11000

See AI/Kher, Golf Course, Amenities, Water Body
02400

See AI/Kher, Golf Course, Water Body
03000

See AI/Kher, Golf Course
04200

Disclaimer: 1. All dimensions are in metric, measured to wall finishes. 2. All materials, dimensions & drawings are approximate. 3. Information is subject to change without notice, at developer's absolute discretion. 4. Actual area may vary from the stated area. 5. Drawing are not to scale. 6. All images used are for illustrative purposes only and do not represent the actual site, features, specifications, fittings and/or fittings. 7. The developer reserves the right to make necessary/alterations, at its absolute discretion, without any liability whatsoever.

1 BEDROOM APARTMENT

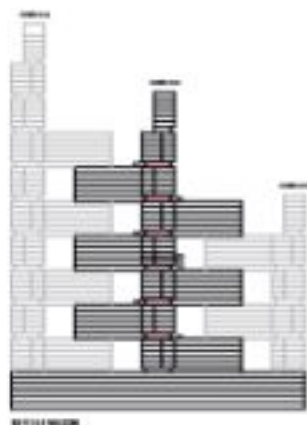
TYPE H (with yard) VARIANT 1

TOTAL SALEABLE AREA

SUITE - 408.04 SQ.FT.

YARD - 115.17 SQ.FT.

TOTAL - 523.21 SQ.FT.



02/11/2020

UNIT



List of unit numbers with this unit plan

VIEWS

Has Air/Bar, Golf Course, Amenities
0202, 0203

Has Air/Bar, Golf Course, Amenities, Water Body
02402

Has Air/Bar, Golf Course
03002, 03003, 04702

Disclaimer: 1. All dimensions are in metric, measured to wall finishes. 2. All materials, dimensions & drawings are approximate. 3. Information is subject to change without notice, at developer's absolute discretion. 4. Actual area may vary from the stated area. 5. Drawing are not to scale. 6. All images used are for illustrative purposes only and do not represent the actual site, features, specifications, fittings and/or finishes. 7. The developer reserves the right to make necessary/alterations, at its absolute discretion, without any liability whatsoever.

1 BEDROOM APARTMENT

TYPE H (with yard) VARIANT 1

TOTAL SALEABLE AREA

SUITE - 408.04 SQ.FT.

YARD - 115.17 SQ.FT.

TOTAL - 523.21 SQ.FT.

 UNIT



List of unit numbers with this unit plan

VIEWS

Has Air/Sea, Golf Course, Amenities
0202, 11002

Has Air/Sea, Golf Course, Amenities, Water Body
02402

Has Air/Sea, Golf Course
03002, 03002, 04702

Disclaimer: 1. All dimensions are in metric, measured to wall finishes. 2. All materials, dimensions & drawings are approximate. 3. Information is subject to change without notice, at developer's absolute discretion. 4. Actual area may vary from the stated area. 5. Drawing are not to scale. 6. All images used are for illustrative purposes only and do not represent the actual site, fixtures, specifications, fittings and/or finishes. 7. The developer reserves the right to make necessary/alterations, at its absolute discretion, without any liability whatsoever.

1 BEDROOM APARTMENT

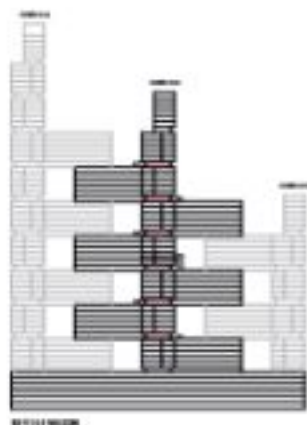
TYPE J (with yard)

TOTAL SALEABLE AREA

SUITE - 502.84 SQ.FT.

YARD - 115.17 SQ.FT.

TOTAL - 618.01 SQ.FT.



02/11/2020

UNIT



List of unit numbers with this unit plan

VIEWS

Sea View, Golf Course, Amenity
02704, 02804

Sea View, Golf Course, Amenity, Water Body
02404

Sea View, Golf Course, Water Body
02004, 02604

Sea View, Golf Course
04004

Disclaimer: 1. All dimensions are in metric, measured to wall finishes. 2. All materials, dimensions & drawings are approximate. 3. Information is subject to change without notice, at developer's absolute discretion. 4. Actual area may vary from the stated area. 5. Drawing are not to scale. 6. All images used are for illustrative purposes only and do not represent the actual site, fixtures, specifications, fittings and/or settings. 7. The developer may use the right to make necessary alterations, at its absolute discretion, without any liability whatsoever.

1 BEDROOM APARTMENT

TYPE J (with yard)

TOTAL SALEABLE AREA

SUITE - 502.84 SQ.FT.

YARD - 115.17 SQ.FT.

TOTAL - 618.01 SQ.FT.

 UNIT



List of unit numbers with this unit plan

VIEWS

Sea View, Golf Course, Amenity
S204, S224

Sea View, Golf Course, Amenity, Water Body
S244

Sea View, Golf Course, Water Body
S200-4, S220-4

Sea View, Golf Course
S404

Disclaimer: 1. All dimensions are in metric, measured to wall finishes. 2. All materials, dimensions & drawings are approximate. 3. Information is subject to change without notice, at developer's absolute discretion. 4. Actual area may vary from the stated area. 5. Drawing are not to scale. 6. All images used are for illustrative purposes only and do not represent the actual site, features, specifications, fittings and/or finishes. 7. The developer reserves the right to make necessary/alterations, at its absolute discretion, without any liability whatsoever.

1 BEDROOM APARTMENT

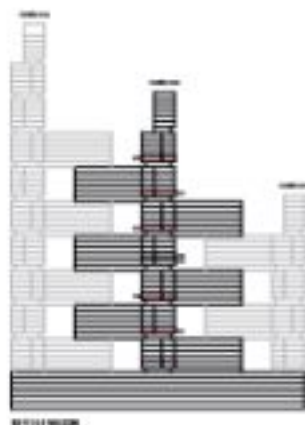
TYPE K (with yard)

TOTAL SALEABLE AREA

SUITE - 490.21 SQ.F.T.

YARD - 110.95 SQ.F.T.

TOTAL - 601.16 SQ.F.T.



8/11/18/0208

UNIT



List of unit numbers with this unit plan

VIEWS

View A/R/Kar, Golf Course, Amenities
8100, 8100

View A/R/Kar, Golf Course, Water Body
8100

View A/R/Kar, Golf Course
8170K, 8400K

Disclaimer: 1. All dimensions are in metric, measured to wall finishes. 2. All materials, dimensions & drawings are approximate. 3. Information is subject to change without notice, at developer's absolute discretion. 4. Actual area may vary from the stated area. 5. Drawing are not to scale. 6. All images used are for illustrative purposes only and do not represent the actual site, features, specifications, fittings and/or finishes. 7. The developer reserve the right to make necessary/alterations, at its absolute discretion, without any liability whatsoever.

1 BEDROOM APARTMENT

TYPE K (with yard)

TOTAL SALEABLE AREA

SUITE - 490.21 SQ.FT.

YARD - 110.05 SQ.FT.

TOTAL - 600.26 SQ.FT.

UNIT



List of unit numbers with this unit plan

VIEWS

the AlRhan, Golf Course, Amman
0206, 01006

the AlRhan, Golf Course, Water Body
0206

the AlRhan, Golf Course
0206, 04006

Disclaimer: 1. All dimensions are in metric, measured to wall finishes. 2. All materials, dimensions & drawings are approximate. 3. Information is subject to change without notice, at developer's absolute discretion. 4. Actual area may vary from the stated area. 5. Drawing are not to scale. 6. All images used are for illustrative purposes only and do not represent the actual site, features, specifications, fittings and/or finishes. 7. The developer reserves the right to make necessary/alterations, at its absolute discretion, without any liability whatsoever.

1 BEDROOM APARTMENT

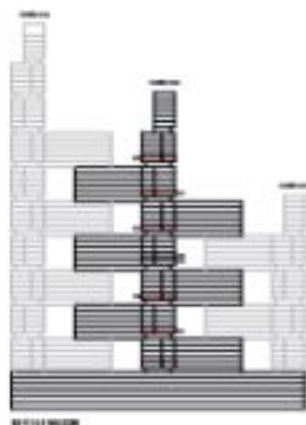
TYPE K (with yard) VARIANT 1

TOTAL SALEABLE AREA

SUITE - 491.58 SQ.FT.

YARD - 110.95 SQ.FT.

TOTAL - 602.53 SQ.FT.



01/11/2020

UNIT



List of unit numbers with this unit plan

VIEWS

View A/R/Kar, Golf Course, Amman
0305, 0306

View A/R/Kar, Golf Course, Water Body
0305

View A/R/Kar, Golf Course
0305, 0405

Disclaimer: 1. All dimensions are in metric, measured to wall finishes. 2. All materials, dimensions & drawings are approximate. 3. Information is subject to change without notice, at developer's absolute discretion. 4. Actual area may vary from the stated area. 5. Drawing are not to scale. 6. All images used are for illustrative purposes only and do not represent the actual site, features, specifications, fittings and/or settings. 7. The developer reserve the right to make necessary/alterations, at its absolute discretion, without any liability whatsoever.

1 BEDROOM APARTMENT

TYPE K (with yard) VARIANT 1

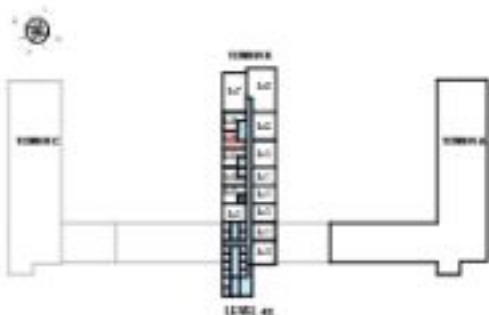
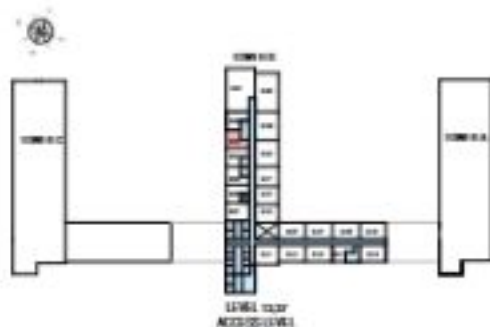
TOTAL SALEABLE AREA

SUITE - 491.58 SQ.FT.

YARD - 110.95 SQ.FT.

TOTAL - 602.53 SQ.FT.

UNIT



List of unit numbers with this unit plan

VIEWS

the AlRhan, Golf Course, Amman
0305, 0405

the AlRhan, Golf Course, Water Body
0305

the AlRhan, Golf Course
0305, 0405

Disclaimer: 1. All dimensions are in metric, measured to wall finishes. 2. All materials, dimensions & drawings are approximate. 3. Information is subject to change without notice, at developer's absolute discretion. 4. Actual area may vary from the stated area. 5. Drawing are not to scale. 6. All images used are for illustrative purposes only and do not represent the actual site, features, specifications, fittings and/or finishes. 7. The developer reserves the right to make necessary/alterations, at its absolute discretion, without any liability whatsoever.

1 BEDROOM APARTMENT

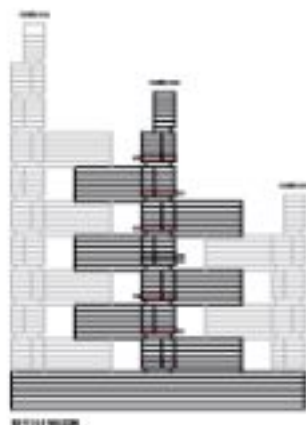
TYPE L (with yard)

TOTAL SALEABLE AREA

SUITE - 503.04 SQ.FT.

YARD - 100.00 SQ.FT.

TOTAL - 603.04 SQ.FT.



01/11/2020

UNIT



List of unit numbers with this unit plan

VEWS

View Al Khay, Golf Course, Amman
0300, 0400

View Al Khay, Golf Course, Water Study
0300

View Al Khay, Golf Course
0300, 0400

Disclaimer: 1. All dimensions are in metric, measured to wall finishes. 2. All materials, dimensions & drawings are approximate. 3. Information is subject to change without notice, at developer's absolute discretion. 4. Actual area may vary from the stated area. 5. Drawing are not to scale. 6. All images used are for illustrative purposes only and do not represent the actual site, features, specifications, fittings and/or finishes. 7. The developer reserve the right to make necessary/alterations, at its absolute discretion, without any liability whatsoever.

1 BEDROOM APARTMENT

TYPE L (with yard)

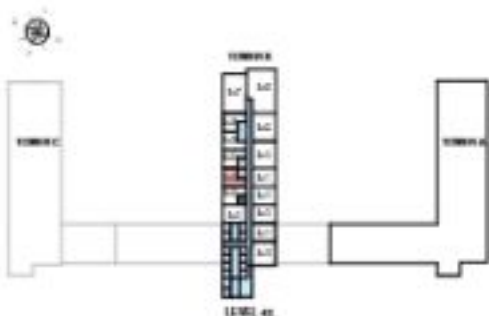
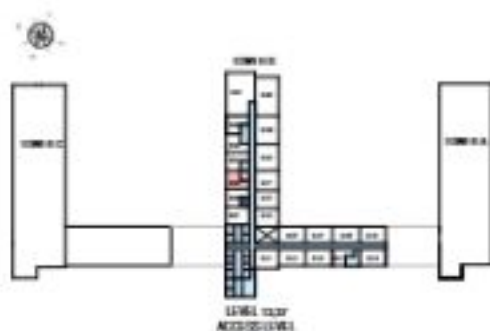
TOTAL SALEABLE AREA

SUITE - 503.04 SQ.FT.

YARD - 100.00 SQ.FT.

TOTAL - 603.04 SQ.FT.

UNIT



List of unit numbers with this unit plan

VIEWS

View A/R/Rear, Golf Course, Amenities
02302, 04302

View A/R/Rear, Golf Course, Water Study
02302

View A/R/Rear, Golf Course
02302, 04302

Disclaimer: 1. All dimensions are in metric, measured to wall finishes. 2. All materials, dimensions & drawings are approximate. 3. Information is subject to change without notice, at developer's absolute discretion. 4. Actual area may vary from the stated area. 5. Drawing are not to scale. 6. All images used are for illustrative purposes only and do not represent the actual site, features, specifications, fittings and/or finishes. 7. The developer reserves the right to make necessary/alterations, at its absolute discretion, without any liability whatsoever.

1 BEDROOM APARTMENT

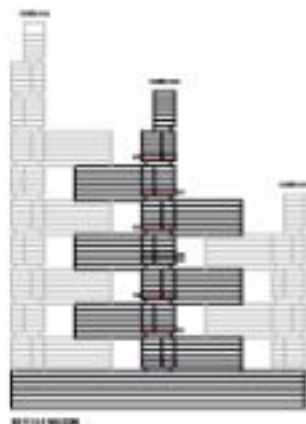
TYPE L (with yard) VARIANT 1

TOTAL SALEABLE AREA

SUITE - 503.04 SQ.FT.

YARD - 100.00 SQ.FT.

TOTAL - 603.04 SQ.FT.



01/11/2020

UNIT



List of unit numbers with this unit plan

VIEWS

Sea, Al Khbar, Golf Course, Amman

03002, 03007

Sea, Al Khbar, Golf Course

03000, 03100, 04007

Disclaimer: 1. All dimensions are in metric, measured to wall finishes. 2. All materials, dimensions & drawings are approximate. 3. Information is subject to change without notice, at developer's absolute discretion. 4. Actual area may vary from the stated area. 5. Drawing are not to scale. 6. All images used are for illustrative purposes only and do not represent the actual site, features, specifications, fittings and/or finishes. 7. The developer reserve the right to make necessary/alterations, at its absolute discretion, without any liability whatsoever.

1 BEDROOM APARTMENT

TYPE L (with yard) VARIANT 1

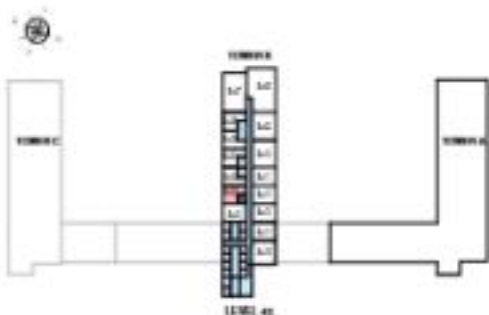
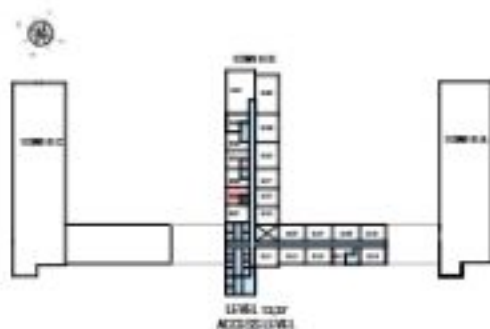
TOTAL SALEABLE AREA

SUITE - 503.04 SQ.FT.

YARD - 100.00 SQ.FT.

TOTAL - 603.04 SQ.FT.

UNIT



List of unit numbers with this unit plan

VEWS

View A/R/K/S, Golf Course, Amenity

0300, 03002

View A/R/K/S, Golf Course

0300, 03100, 04002

Disclaimer: 1. All dimensions are in metric, measured to wall finishes. 2. All materials, dimensions & drawings are approximate. 3. Information is subject to change without notice, at developer's absolute discretion. 4. Actual area may vary from the stated area. 5. Drawing are not to scale. 6. All images used are for illustrative purposes only and do not represent the actual site, fixtures, specifications, fittings and/or finishes. 7. The developer reserves the right to make necessary/alterations, at its absolute discretion, without any liability whatsoever.

1 BEDROOM APARTMENT

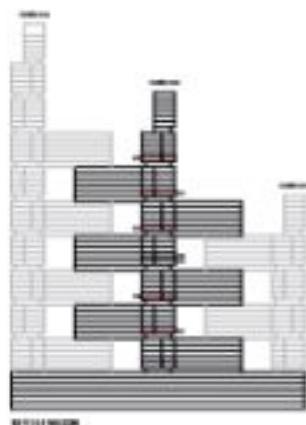
TYPE M (with yard)

TOTAL SALEABLE AREA

SUITE - 508.06 SQ.F.T.

YARD - 110.29 SQ.F.T.

TOTAL - 618.35 SQ.F.T.



82101 82102

UNIT



List of unit numbers with this unit plan

VIEWS

Sea, Al Khay, Golf Course, Amman
82304, 81904

Sea, Al Khay, Golf Course, Water Study
82304

Sea, Al Khay, Golf Course
82704, 84304

Disclaimer: 1. All dimensions are in metric, measured to wall finishes. 2. All materials, dimensions & drawings are approximate. 3. Information is subject to change without notice, at developer's absolute discretion. 4. Actual area may vary from the stated area. 5. Drawing are not to scale. 6. All images used are for illustrative purposes only and do not represent the actual site, features, specifications, fittings and/or finishes. 7. The developer reserve the right to make necessary alterations, at its absolute discretion, without any liability whatsoever.

1 BEDROOM APARTMENT

TYPE M (with yard)

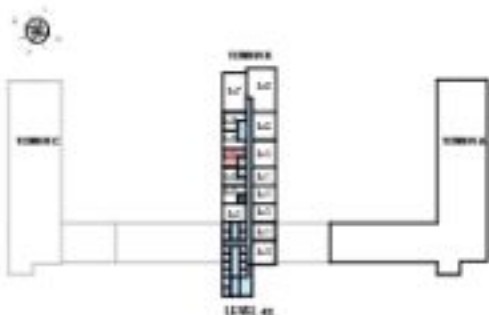
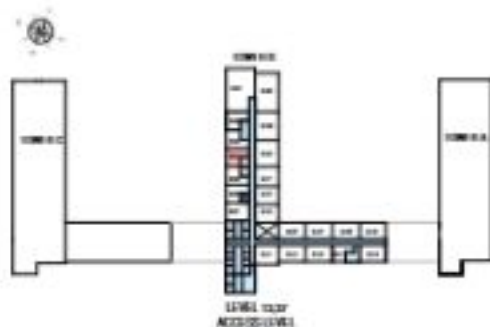
TOTAL SALEABLE AREA

SUITE - 508.06 SQ.FT.

YARD - 110.29 SQ.FT.

TOTAL - 618.35 SQ.FT.

 UNIT



List of unit numbers with this unit plan

VIEWS

View A/R/Rear, Golf Course, Amenity
B2304, B1904

View A/R/Rear, Golf Course, Water Study
B2304

View A/R/Rear, Golf Course
B2704, B4004

Disclaimer: 1. All dimensions are in metric, measured to wall finishes. 2. All materials, dimensions & drawings are approximate. 3. Information is subject to change without notice, at developer's absolute discretion. 4. Actual area may vary from the stated area. 5. Drawing are not to scale. 6. All images used are for illustrative purposes only and do not represent the actual site, fixtures, specifications, fittings and/or finishes. 7. The developer reserves the right to make necessary/alterations, at its absolute discretion, without any liability whatsoever.

1.5 BEDROOM APARTMENT

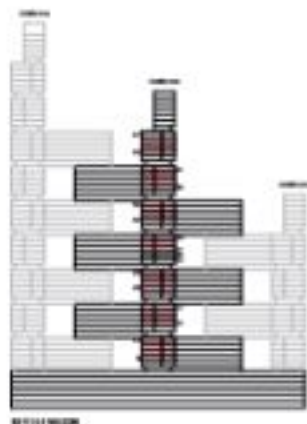
TYPE A (with study room + balcony)

TOTAL SALEABLE AREA

SUITE - 630.98 SQ.F.T.

BALCONY - 45.99 SQ.F.T.

TOTAL - 676.98 SQ.F.T.



01/11/2020

UNIT



List of unit numbers with this unit plan

VIEWS

Amesites, Creek

001, 0012, 0015, 0017, 0018, 0019

Golf Course, Amesites, Creek

0011, 0013, 0016, 0019, 0021, 0022, 0023, 0024, 0025, 0026, 0027, 0028, 0029, 0030, 0031, 0032, 0033, 0034, 0035, 0036, 0037, 0038, 0039, 0040, 0041, 0042, 0043, 0044, 0045, 0046, 0047, 0048, 0049

Golf Course, Creek

0070, 0071, 0072, 0073, 0074, 0075, 0076, 0077, 0078, 0079, 0080, 0081, 0082, 0083, 0084, 0085, 0086, 0087, 0088, 0089, 0090, 0091, 0092, 0093, 0094, 0095, 0096, 0097, 0098, 0099

Disclaimer: 1. All dimensions are in metric, measured to wall finishes. 2. All materials, dimensions & drawings are approximate. 3. Information is subject to change without notice, at developer's absolute discretion. 4. Actual area may vary from the stated area. 5. Drawing are not to scale. 6. All images used are for illustrative purposes only and do not represent the actual site, features, specifications, fittings and/or finishes. 7. The developer reserves the right to make necessary alterations, at its absolute discretion, without any liability whatsoever.

1.5 BEDROOM APARTMENT

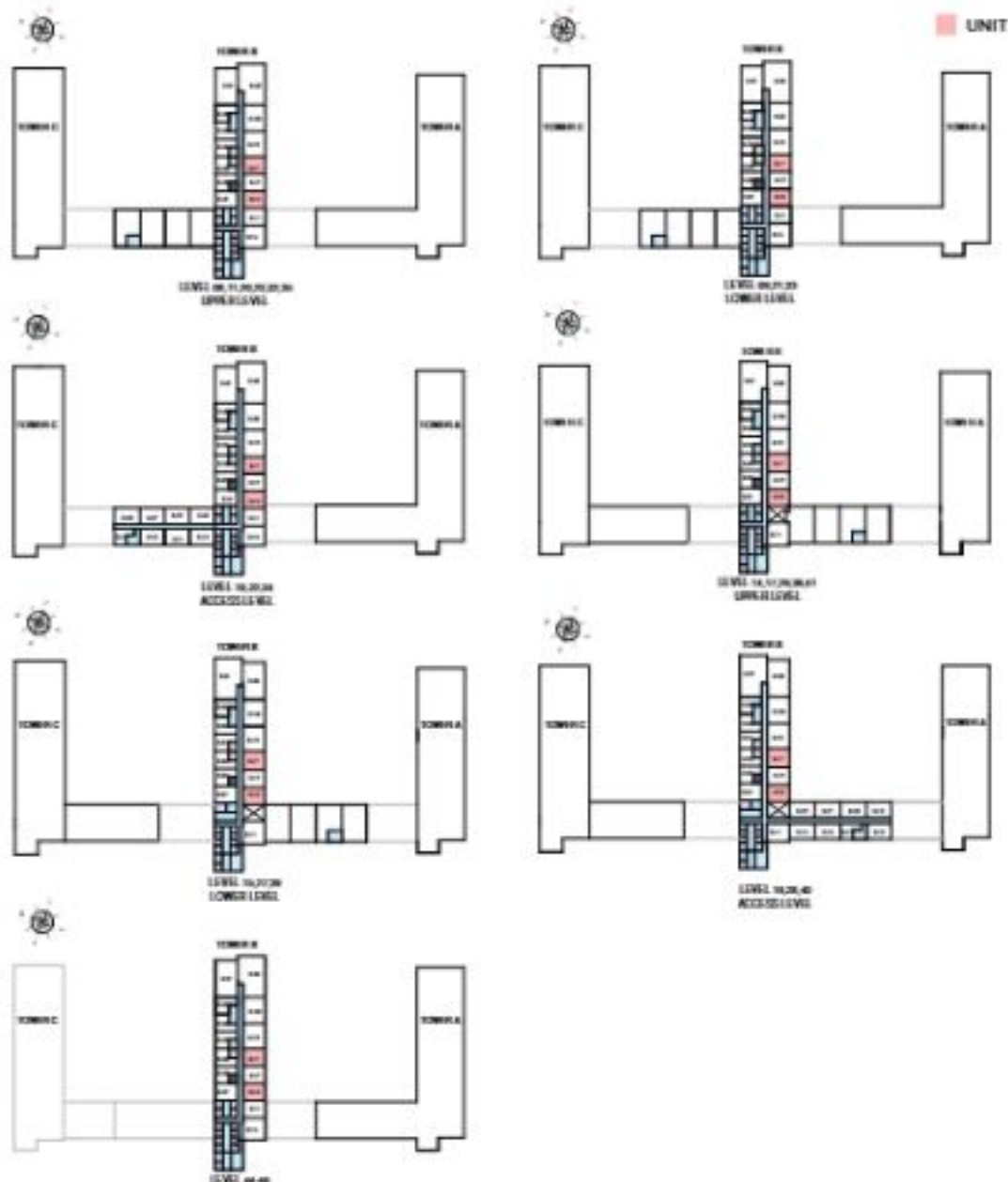
TYPE A (with study room + balcony)

TOTAL SALEABLE AREA

SUITE - 830.99 SQ.FT.

BALCONY - 45.99 SQ.FT.

TOTAL - 876.98 SQ.FT.



List of unit numbers with this unit plan

VIEWS

Amesites Creek

8801, 8813, 8825, 8837, 8849, 8861, 8873

Golf Course, Amesites Creek

8911, 8913, 8945, 8947, 8951, 8953, 8957, 8961, 8963, 8975, 8977, 8979, 8981, 8983, 8985, 8987, 8989, 8991, 8993, 8995, 8997, 8999, 9001, 9003

Golf Course, Creek

9275, 9277, 9291, 9293, 9295, 9297, 9301, 9303, 9305, 9307, 9309, 9311, 9313, 9315, 9317, 9319, 9321, 9323, 9325, 9327, 9329, 9331, 9333, 9335, 9337, 9339, 9341, 9343, 9345, 9347, 9349, 9351, 9353, 9355, 9357, 9359, 9361, 9363, 9365, 9367, 9369, 9371, 9373, 9375, 9377, 9379, 9381, 9383, 9385, 9387, 9389, 9391, 9393, 9395, 9397, 9399, 9401, 9403, 9405, 9407, 9409, 9411, 9413, 9415, 9417, 9419, 9421, 9423, 9425, 9427, 9429, 9431, 9433, 9435

Disclaimer: 1. All dimensions are in metric, measured to wall finishes. 2. All materials, dimensions & drawings are approximate. 3. Information is subject to change without notice, at developer's absolute discretion. 4. Actual area may vary from the stated area. 5. Drawing are not to scale. 6. All images used are for illustrative purposes only and do not represent the actual site, features, specifications, fittings and/or materials. 7. The developer reserves the right to make necessary/alterations, at its absolute discretion, without any liability whatsoever.

1.5 BEDROOM APARTMENT

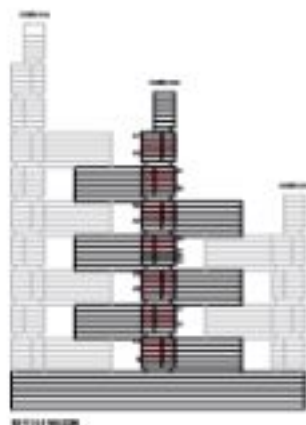
TYPE A (with study room + balcony) VARIANT 1

TOTAL SALEABLE AREA

SUITE - 630.98 SQ.FT.

BALCONY - 45.99 SQ.FT.

TOTAL - 676.98 SQ.FT.



8/11/2020

UNIT



List of unit numbers with this unit plan:

VIEWS

Aspenia, Creek
8002, 8002, 8102

Golf Course, Aspenia, Creek
8112, 8142, 8152, 8162, 8172, 8202, 8212, 8212, 8232

Golf Course, Creek
8272, 8292, 8292, 8322, 8332, 8342, 8352, 8362, 8362, 8402, 8412, 8412,
8452, 8452

Disclaimer: 1. All dimensions are in metric, measured to wall finishes. 2. All materials, dimensions & drawings are approximate. 3. Information is subject to change without notice, at developer's absolute discretion. 4. Actual area may vary from the stated area. 5. Drawing are not to scale. 6. All images used are for illustrative purposes only and do not represent the actual site, features, specifications, fittings and/or finishes. 7. The developer reserves the right to make necessary alterations, at its absolute discretion, without any liability whatsoever.

1.5 BEDROOM APARTMENT

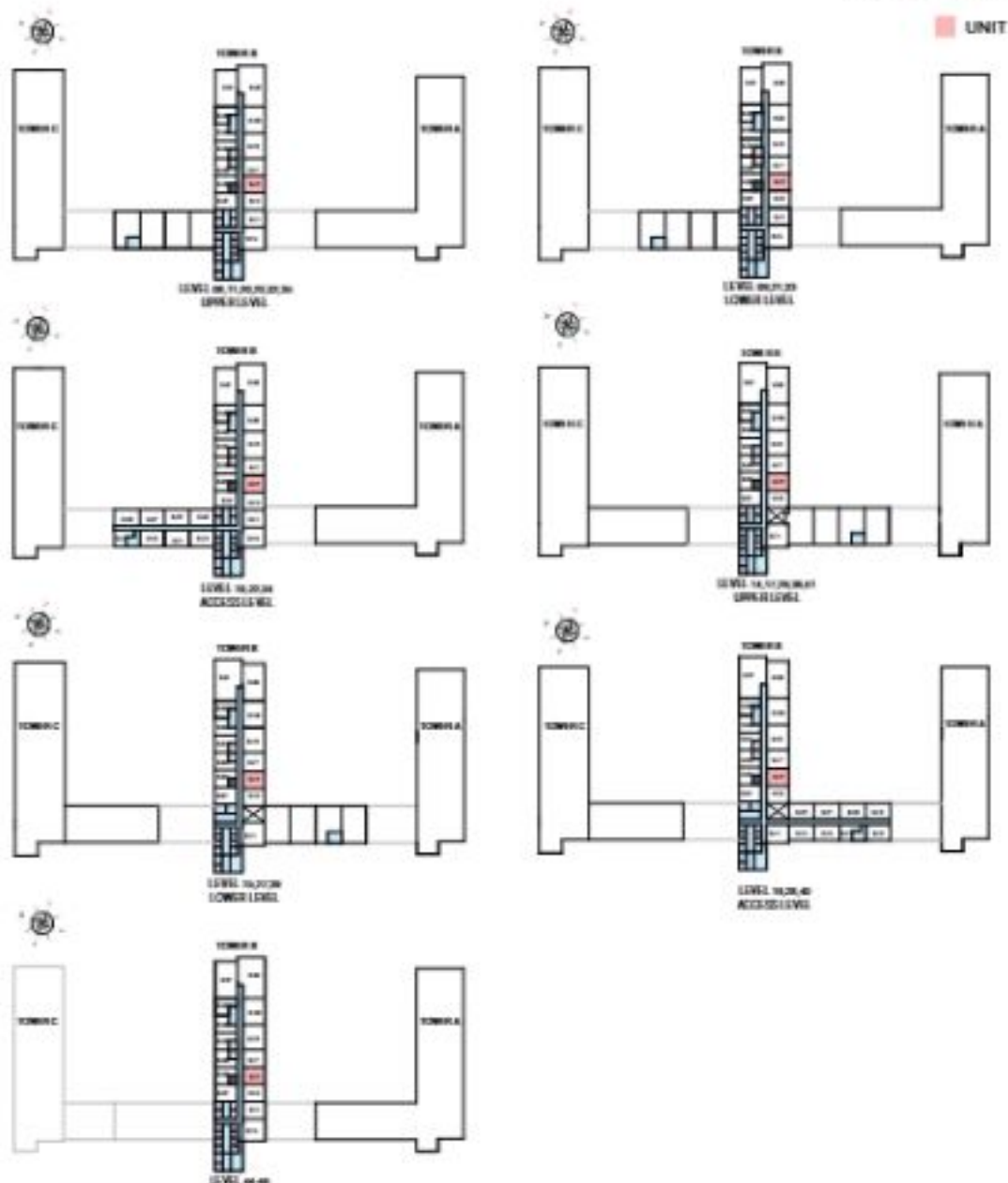
TYPE A (with study room + balcony) VARIANT 1

TOTAL SALEABLE AREA

SUITE - 630.99 SQ.FT.

BALCONY - 45.99 SQ.FT.

TOTAL - 676.98 SQ.FT.



List of unit numbers with this unit plan:

VIEWS

Asentias, Creek
 B0102, B0103, B0107

Golf Course, Asentias, Creek
 B0102, B0103, B0107, B0108, B0109, B0110, B0111, B0112, B0113, B0114, B0115

Golf Course, Creek
 B02102, B02103, B02107, B02108, B02109, B02110, B02111, B02112, B02113, B02114, B02115, B02116, B02117

Disclaimer: 1. All dimensions are in metric, measured to wall finishes. 2. All materials, dimensions & drawings are approximate. 3. Information is subject to change without notice, at developer's absolute discretion. 4. Actual area may vary from the stated area. 5. Drawing are not to scale. 6. All images used are for illustrative purposes only and do not represent the actual site, features, specifications, fittings and/or settings. 7. The developer reserves the right to make necessary alterations, at its absolute discretion, without any liability whatsoever.

1.5 BEDROOM APARTMENT

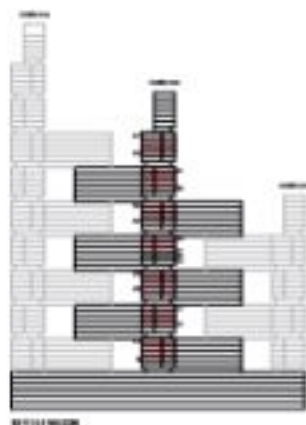
TYPE A (with study room + balcony) VARIANT 2

TOTAL SALEABLE AREA

SUITE - 635.38 SQ.FT.

BALCONY - 45.90 SQ.FT.

TOTAL - 681.28 SQ.FT.



8111/8128

UNIT



List of unit numbers with this unit plan:

VIEWS

Sea At/River, Ametities
8101, 8101, 8101

Sea At/River, Golf Course, Ametities
8101, 8140, 8150, 8160, 8170, 8180, 8190, 8200, 8210, 8220, 8230

Sea At/River, Golf Course
8270, 8280, 8290, 8300, 8310, 8320, 8330, 8340, 8350, 8360, 8370, 8400, 8410, 8420,
8430, 8440

Disclaimer: 1. All dimensions are in metric, measured to wall finishes. 2. All materials, dimensions & drawings are approximate. 3. Information is subject to change without notice, at developer's absolute discretion. 4. Actual area may vary from the stated area. 5. Drawing are not to scale. 6. All images used are for illustrative purposes only and do not represent the actual site, features, specifications, fittings and/or settings. 7. The developer reserves the right to make necessary alterations, at its absolute discretion, without any liability whatsoever.

1.5 BEDROOM APARTMENT

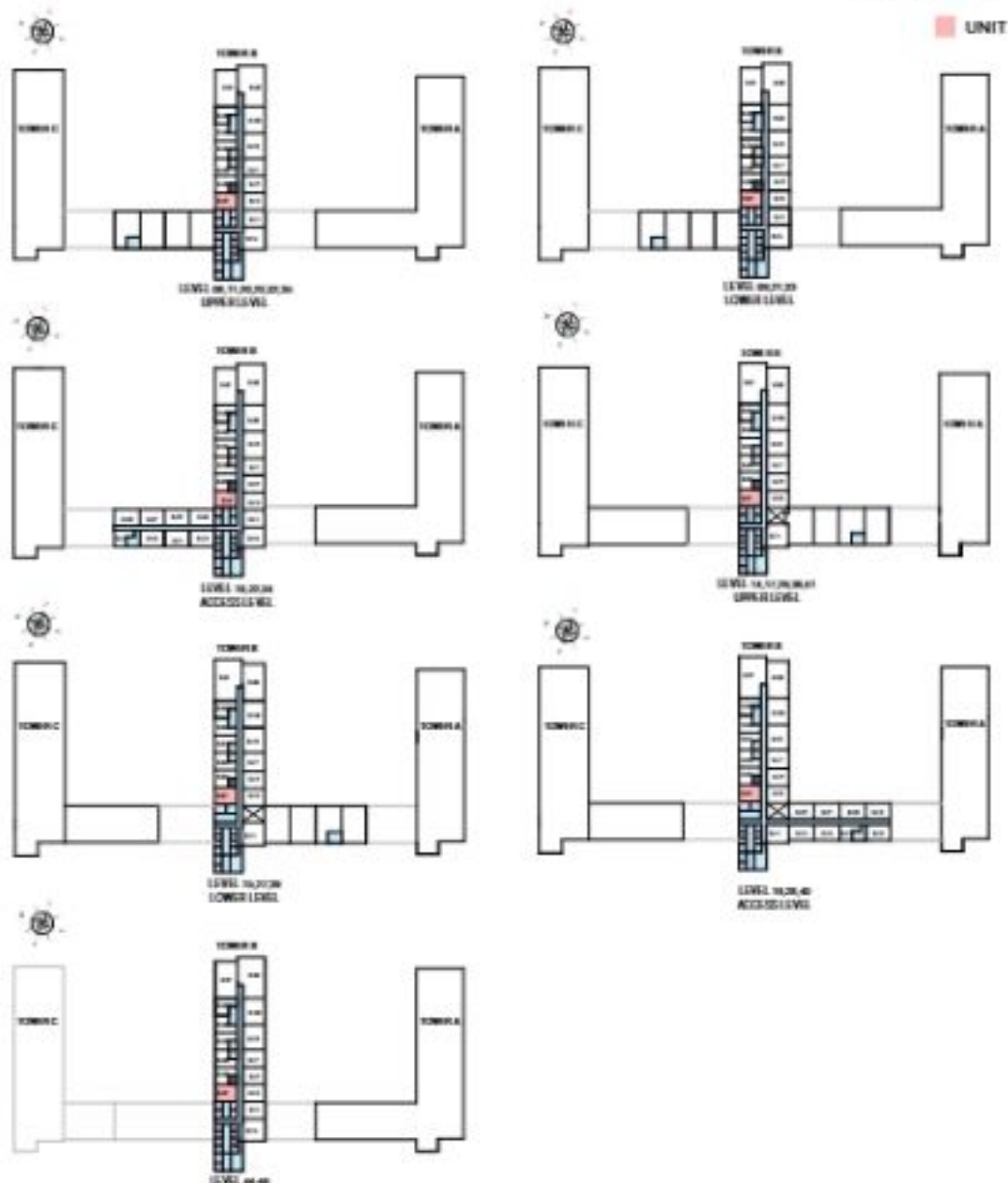
TYPE A (with study room + balcony) VARIANT 2

TOTAL SALEABLE AREA

SUITE - 635.38 SQ.FT.

BALCONY - 45.90 SQ.FT.

TOTAL - 681.28 SQ.FT.



List of unit numbers with this unit plan:

VIEWS

Sea At Her, Ametities

8101, 81401, 81401

Sea At Her, Golf Course, Ametities

8101, 81401, 82501, 83001, 81701, 82001, 82101, 82201, 82301

Sea At Her, Golf Course

82701, 82901, 82901, 83201, 83301, 83401, 82501, 83801, 83901, 84001, 84101, 84401, 84501, 84501

Disclaimer: 1. All dimensions are in metric, measured to wall finishes. 2. All materials, dimensions & drawings are approximate. 3. Information is subject to change without notice, at developer's absolute discretion. 4. Actual area may vary from the stated area. 5. Drawing are not to scale. 6. All images used are for illustrative purposes only and do not represent the actual site, fixtures, specifications, fittings and/or fittings. 7. The developer reserve the right to make necessary/ alterations, at its absolute discretion, without any liability whatsoever.

1.5 BEDROOM APARTMENT

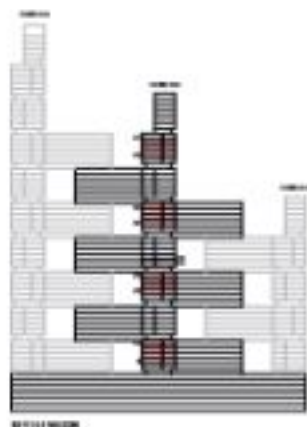
TYPE B (with store room + balcony)

TOTAL SALEABLE AREA

SUITE - 616.17 SQ.F.T.

BALCONY - 46.00 SQ.F.T.

TOTAL - 662.17 SQ.F.T.



00111/00108

UNIT



List of unit numbers with this unit plan:

VIEWS

Amesites, Creek
0014, 0014, 0014

Golf Course, Amesites, Creek
0014, 0014, 0014, 0014, 0014

Golf Course, Creek
0014, 0014, 0014, 0014, 0014, 0014

Disclaimer: 1. All dimensions are in metric, measured to wall finishes. 2. All materials, dimensions & drawings are approximate. 3. Information is subject to change without notice, at developer's absolute discretion. 4. Actual area may vary from the stated area. 5. Drawing are not to scale. 6. All images used are for illustrative purposes only and do not represent the actual site, features, specifications, fittings and/or settings. 7. The developer may use the right to make necessary alterations, at its absolute discretion, without any liability whatsoever.

1.5 BEDROOM APARTMENT

TYPE B (with store room + balcony)

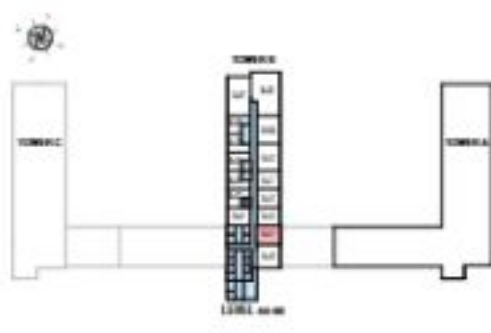
TOTAL SALEABLE AREA

SUITE - 616.17 SQ.FT.

BALCONY - 46.00 SQ.FT.

TOTAL - 662.17 SQ.FT.

 UNIT



List of unit numbers with this unit plan:

VEWS

Amesites, Creek
B214, B214, B214

Golf Course, Creek
B224, B224, B244, B224, B444, B444, B444

Golf Course, Amesites, Creek
B214, B214, B214, B214, B214

Disclaimer: 1. All dimensions are in metric, measured to wall finishes. 2. All materials, dimensions & drawings are approximate. 3. Information is subject to change without notice, at developer's absolute discretion. 4. Actual area may vary from the stated area. 5. Drawing are not to scale. 6. All images used are for illustrative purposes only and do not represent the actual site, fixtures, specifications, fittings and/or finishes. 7. The developer reserves the right to make necessary/alterations, at its absolute discretion, without any liability whatsoever.

1.5 BEDROOM APARTMENT

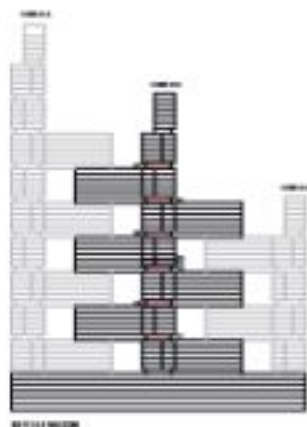
TYPE C (with store room + yard)

TOTAL SALEABLE AREA

SUITE - 625.77 SQ.FT.

YARD - 115.80 SQ.FT.

TOTAL - 741.57 SQ.FT.



8111/8128

UNIT



List of unit numbers with this unit plan

VIEWS

Golf Course, Arabian, Creek
8270, 8271, 8301, 8312, 8240, 8241

Golf Course, Creek
8201, 8203, 8261, 8262, 8470, 8471

Disclaimer: 1. All dimensions are in metric, measured to wall finishes. 2. All materials, dimensions & drawings are approximate. 3. Information is subject to change without notice, at developer's absolute discretion. 4. Actual area may vary from the stated area. 5. Drawing are not to scale. 6. All images used are for illustrative purposes only and do not represent the actual site, features, specifications, fittings and/or finishes. 7. The developer reserves the right to make necessary alterations, at its absolute discretion, without any liability whatsoever.

1.5 BEDROOM APARTMENT

TYPE C (with store room + yard)

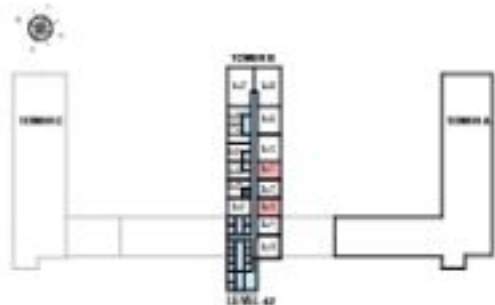
TOTAL SALEABLE AREA

SUITE - 625.77 SQ.FT.

YARD - 115.80 SQ.FT.

TOTAL - 741.57 SQ.FT.

 UNIT



List of unit numbers with this unit plan:

VIEWS

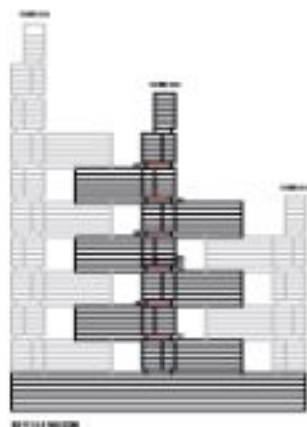
Golf Course, Arabian, Creek
0270, 0271, 0301, 0312, 0240, 0243

Golf Course, Creek
0301, 0303, 0351, 0362, 0471, 0473

Disclaimer: 1. All dimensions are in metric, measured to wall finishes. 2. All materials, dimensions & drawings are approximate. 3. Information is subject to change without notice, at developer's absolute discretion. 4. Actual area may vary from the stated area. 5. Drawing are not to scale. 6. All images used are for illustrative purposes only and do not represent the actual site, features, specifications, fittings and/or finishes. 7. The developer reserves the right to make necessary/alterations, at its absolute discretion, without any liability whatsoever.

1.5 BEDROOM APARTMENT
TYPE C (with store room + yard) VARIANT 1

TOTAL SALEABLE AREA
SUITE - 625.77 SQ.FT.
YARD - 115.80 SQ.FT.
TOTAL - 741.57 SQ.FT.



82112/82128

UNIT



List of unit numbers with this unit plan:

VIEWS

Golf Course, Araratian, Creek
82120, 82127, 82142

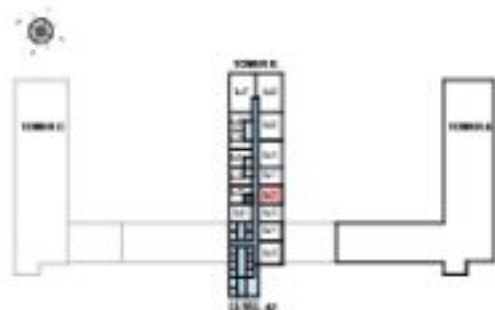
Golf Course, Creek
82012, 82010, 84212

Disclaimer: 1. All dimensions are in metric, measured to wall finishes. 2. All materials, dimensions & drawings are approximate. 3. Information is subject to change without notice, at developer's absolute discretion. 4. Actual area may vary from the stated area. 5. Drawing are not to scale. 6. All images used are for illustrative purposes only and do not represent the actual site, features, specifications, fittings and/or settings. 7. The developer reserves the right to make necessary alterations, at its absolute discretion, without any liability whatsoever.

1.5 BEDROOM APARTMENT
TYPE C (with store room + yard) VARIANT 1

TOTAL SALEABLE AREA
 SUITE - 625.77 SQ.FT.
 YARD - 115.80 SQ.FT.
 TOTAL - 741.57 SQ.FT.

 UNIT



List of unit numbers with this unit plan:

VEWS

Golf Course, Amenity, Creek
 B2102, B2103, B2107

Golf Course, Creek
 B2101, B2104, B4212

Disclaimer: 1. All dimensions are in metric, measured to wall finishes. 2. All materials, dimensions & drawings are approximate. 3. Information is subject to change without notice, at developer's absolute discretion. 4. Actual area may vary from the stated area. 5. Drawing are not to scale. 6. All images used are for illustrative purposes only and do not represent the actual site, features, specifications, fittings and/or finishes. 7. The developer reserves the right to make necessary/alterations, at its absolute discretion, without any liability whatsoever.

1.5 BEDROOM APARTMENT

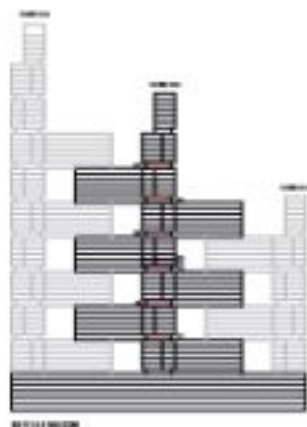
TYPE C (with store room + yard) VARIANT 2

TOTAL SALEABLE AREA

SUITE - 630.16 SQ.F.T.

YARD - 115.00 SQ.F.T.

TOTAL - 745.16 SQ.F.T.



0011101020

UNIT



List of unit numbers with this unit plan

VIEWS

Sea Al Khor, Golf Course, Amenities
0201, 0203

Sea Al Khor, Golf Course, Amenities, Water Body
02401

Sea Al Khor, Golf Course
02001, 02003, 04001

Disclaimer: 1. All dimensions are in metric, measured to wall finishes. 2. All materials, dimensions & drawings are approximate. 3. Information is subject to change without notice, at developer's absolute discretion. 4. Actual area may vary from the stated area. 5. Drawing are not to scale. 6. All images used are for illustrative purposes only and do not represent the actual site, features, specifications, fittings and/or settings. 7. The developer reserves the right to make necessary alterations, at its absolute discretion, without any liability whatsoever.

1.5 BEDROOM APARTMENT
TYPE C (with store room + yard) VARIANT 2

TOTAL SALEABLE AREA
SUITE - 630.16 SQ.FT.
YARD - 115.00 SQ.FT.
TOTAL - 745.16 SQ.FT.

 UNIT



List of unit numbers with this unit plan

VIEWS

Sea, Al Khor, Golf Course, Amenities
S201, S202

Sea, Al Khor, Golf Course, Amenities, Water Body
S2-N2

Sea, Al Khor, Golf Course
S2001, S2002, S4C201

Disclaimer: 1. All dimensions are in metric, measured to wall finishes. 2. All materials, dimensions & drawings are approximate. 3. Information is subject to change without notice, at developer's absolute discretion. 4. Actual area may vary from the stated area. 5. Drawing are not to scale. 6. All images used are for illustrative purposes only and do not represent the actual site, fixtures, specifications, fittings and/or finishes. 7. The developer reserve the right to make necessary/ alterations, at its absolute discretion, without any liability whatsoever.

1.5 BEDROOM APARTMENT

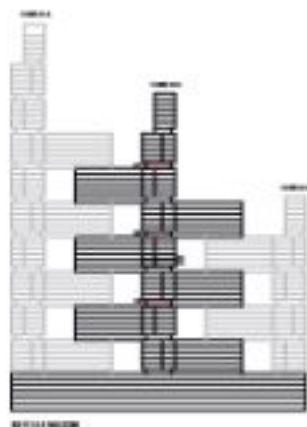
TYPE D (with store room + yard)

TOTAL SALEABLE AREA

SUITE - 615.24 SQ.F.T.

YARD - 115.91 SQ.F.T.

TOTAL - 731.15 SQ.F.T.



82014-01028



List of unit numbers with this unit plan

VIEWS

Golf Course, Araratton, Creek
82014

Golf Course, Creek
82014, 84254

Disclaimer: 1. All dimensions are in metric, measured to wall finishes. 2. All materials, dimensions & drawings are approximate. 3. Information is subject to change without notice, at developer's absolute discretion. 4. Actual area may vary from the stated area. 5. Drawing are not to scale. 6. All images used are for illustrative purposes only and do not represent the actual site, features, specifications, fittings and/or settings. 7. The developer reserves the right to make necessary/alterations, at its absolute discretion, without any liability whatsoever.

1.5 BEDROOM APARTMENT

TYPE D (with store room + yard)

TOTAL SALEABLE AREA

SUITE - 615.24 SQ.F.T.

YARD - 115.91 SQ.F.T.

TOTAL - 731.15 SQ.F.T.

 UNIT



List of unit numbers with this unit plan:

VEWS

Golf Course, Araratia, Creek

82014

Golf Course, Creek

82014, 84254

Disclaimer: 1. All dimensions are in metric, measured to wall finishes. 2. All materials, dimensions & drawings are approximate. 3. Information is subject to change without notice, at developer's absolute discretion. 4. Actual area may vary from the stated area. 5. Drawing are not to scale. 6. All images used are for illustrative purposes only and do not represent the actual site, features, specifications, fittings and/or finishes. 7. The developer reserves the right to make necessary alterations, at its absolute discretion, without any liability whatsoever.

1.5 BEDROOM APARTMENT

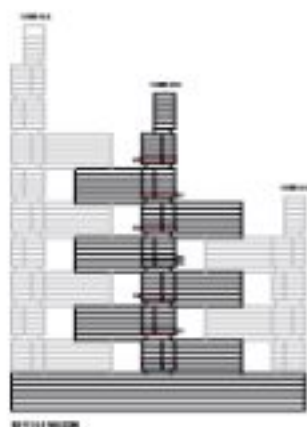
TYPE E (with store room + yard)

TOTAL SALEABLE AREA

SUITE - 630.86 SQ.F.T.

YARD - 110.76 SQ.F.T.

TOTAL - 741.62 SQ.F.T.



8211/8228

UNIT



List of unit numbers with this unit plan

VIEWS

Golf Course, Araratia, Creek
8228, 8241, 8263

Golf Course, Creek
8288, 8212, 8271, 8438, 8420

Disclaimer: 1. All dimensions are in metric, measured to wall finishes. 2. All materials, dimensions & drawings are approximate. 3. Information is subject to change without notice, at developer's absolute discretion. 4. Actual area may vary from the stated area. 5. Drawing are not to scale. 6. All images used are for illustrative purposes only and do not represent the actual site, features, specifications, fittings and/or finishes. 7. The developer reserves the right to make necessary alterations, at its absolute discretion, without any liability whatsoever.

1.5 BEDROOM APARTMENT

TYPE E (with store room + yard)

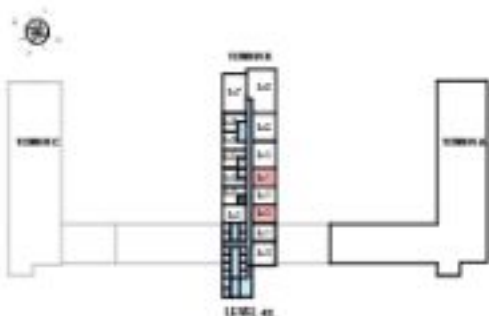
TOTAL SALEABLE AREA

SUITE - 830.86 SQ.F.T.

YARD - 110.76 SQ.F.T.

TOTAL - 941.62 SQ.F.T.

 UNIT



List of unit numbers with this unit plan:

VIEWS

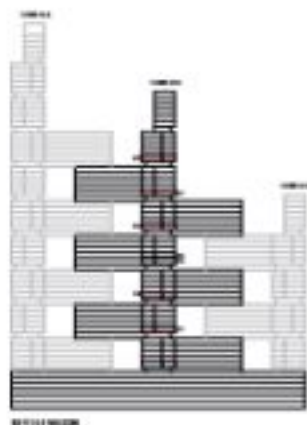
Golf Course, Arabian, Creek
B230, B240, B250

Golf Course, Creek
B260, B270, B280, B290

Disclaimer: 1. All dimensions are in metric, measured to wall finishes. 2. All materials, dimensions & drawings are approximate. 3. Information is subject to change without notice, at developer's absolute discretion. 4. Actual area may vary from the stated area. 5. Drawing are not to scale. 6. All images used are for illustrative purposes only and do not represent the actual site, fixtures, specifications, fittings and/or finishes. 7. The developer reserves the right to make necessary/alterations, at its absolute discretion, without any liability whatsoever.

1.5 BEDROOM APARTMENT
TYPE E (with store room + yard) VARIANT 1

TOTAL SALEABLE AREA
SUITE - 630.98 SQ.F.T.
YARD - 110.33 SQ.F.T.
TOTAL - 741.31 SQ.F.T.



82111/82128

UNIT



List of unit numbers with this unit plan:

VIEWS

Golf Course, Araratton, Creek
82102, 84302

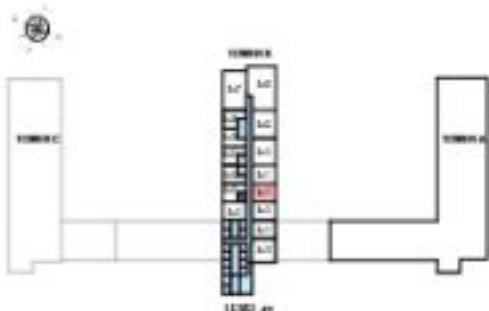
Golf Course, Creek
82102, 82310, 84310

Disclaimer: 1. All dimensions are in metric, measured to wall finishes. 2. All materials, dimensions & drawings are approximate. 3. Information is subject to change without notice, at developer's absolute discretion. 4. Actual area may vary from the stated area. 5. Drawing are not to scale. 6. All images used are for illustrative purposes only and do not represent the actual site, features, specifications, fittings and/or finishes. 7. The developer reserves the right to make necessary alterations, at its absolute discretion, without any liability whatsoever.

1.5 BEDROOM APARTMENT
TYPE E (with store room + yard) VARIANT 1

TOTAL SALEABLE AREA
 SUITE – 630.98 SQ.FT.
 YARD – 110.33 SQ.FT.
 TOTAL – 741.31 SQ.FT.

 UNIT



List of unit numbers with this unit plan:

VEWS

Golf Course, Araratton, Creek
 B2302, B4302

Golf Course, Creek
 B2307, B2307, B4307

Disclaimer: 1. All dimensions are in metric, measured to wall finishes. 2. All materials, dimensions & drawings are approximate. 3. Information is subject to change without notice, at developer's absolute discretion. 4. Actual area may vary from the stated area. 5. Drawing are not to scale. 6. All images used are for illustrative purposes only and do not represent the actual site, features, specifications, fittings and/or finishes. 7. The developer reserves the right to make necessary alterations, at its absolute discretion, without any liability whatsoever.

1.5 BEDROOM APARTMENT

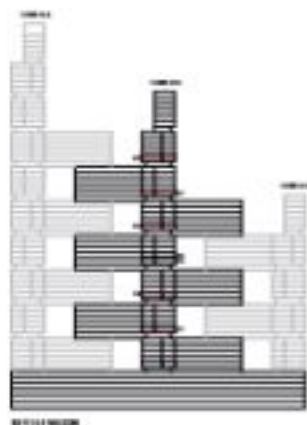
TYPE E (with store room + yard) VARIANT 2

TOTAL SALEABLE AREA

SUITE - 635.38 SQ.F.T.

YARD - 110.65 SQ.F.T.

TOTAL - 746.03 SQ.F.T.



02/11/2020

UNIT



List of unit numbers with this unit plan

VIEWS

Sea Arkhor, Golf Course, Amenity
0201, 0202

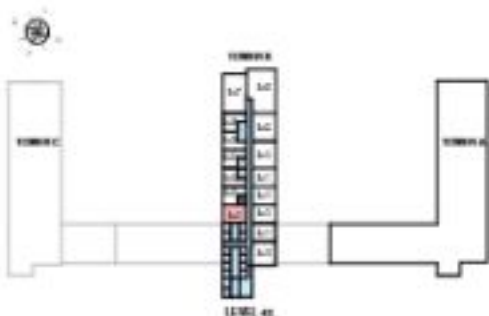
Sea Arkhor, Golf Course
0201, 02101, 04001

Disclaimer: 1. All dimensions are in metric, measured to wall finishes. 2. All materials, dimensions & drawings are approximate. 3. Information is subject to change without notice, at developer's absolute discretion. 4. Actual area may vary from the stated area. 5. Drawing are not to scale. 6. All images used are for illustrative purposes only and do not represent the actual site, features, specifications, fittings and/or finishes. 7. The developer reserve the right to make necessary/alterations, at its absolute discretion, without any liability whatsoever.

1.5 BEDROOM APARTMENT
TYPE E (with store room + yard) VARIANT 2

TOTAL SALEABLE AREA
 SUITE - 635.38 SQ.FT.
 YARD - 110.65 SQ.FT.
 TOTAL - 746.03 SQ.FT.

 UNIT



List of unit numbers with this unit plan:

VEWS

Sea Arkhe, Golf Course, Amantia
 0201, 0301

Sea Arkhe, Golf Course
 0201, 02701, 04001

Disclaimer: 1. All dimensions are in metric, measured to wall finishes. 2. All materials, dimensions & drawings are approximate. 3. Information is subject to change without notice, at developer's absolute discretion. 4. Actual area may vary from the stated area. 5. Drawing are not to scale. 6. All images used are for illustrative purposes only and do not represent the actual site, features, specifications, fittings and/or finishes. 7. The developer reserve the right to make necessary/ alterations, at its absolute discretion, without any liability whatsoever.

1.5 BEDROOM APARTMENT

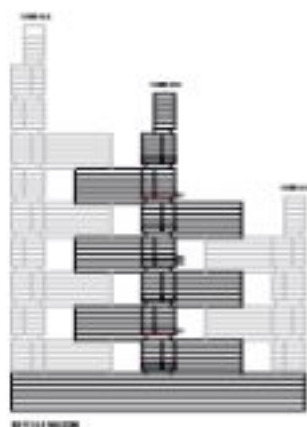
TYPE E (with store room + yard) VARIANT 3

TOTAL SALEABLE AREA

SUITE - 630.98 SQ.F.T.

YARD - 107.21 SQ.F.T.

TOTAL - 738.19 SQ.F.T.



82711/82702

UNIT



List of unit numbers with this unit plan

VIEWS

Golf Course, Araratia, Creek
82702

Golf Course, Creek
82703

Disclaimer: 1. All dimensions are in metric, measured to wall finishes. 2. All materials, dimensions & drawings are approximate. 3. Information is subject to change without notice, at developer's absolute discretion. 4. Actual area may vary from the stated area. 5. Drawing are not to scale. 6. All images used are for illustrative purposes only and do not represent the actual site, features, specifications, fittings and/or finishes. 7. The developer reserves the right to make necessary alterations, at its absolute discretion, without any liability whatsoever.

1.5 BEDROOM APARTMENT
TYPE E (with store room + yard) VARIANT 3

TOTAL SALEABLE AREA
SUITE - 630.96 SQ.FT.
YARD - 107.21 SQ.FT.
TOTAL - 738.19 SQ.FT.

 **UNIT**



List of unit numbers with this unit plan:

VEWS

Golf Course, Arambito, Creek
8323

Golf Course, Creek
8370

Disclaimer: 1. All dimensions are in metric, measured to wall finishes. 2. All materials, dimensions & drawings are approximate. 3. Information is subject to change without notice, at developer's absolute discretion. 4. Actual area may vary from the stated area. 5. Drawing are not to scale. 6. All images used are for illustrative purposes only and do not represent the actual site, features, specifications, fittings and/or finishes. 7. The developer reserve the right to make necessary/ alterations, at its absolute discretion, without any liability whatsoever.

1.5 BEDROOM APARTMENT

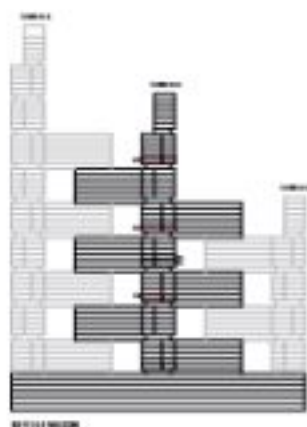
TYPE F (with store room + yard)

TOTAL SALEABLE AREA

SUITE - 618.77 SQ.F.T.

YARD - 110.37 SQ.F.T.

TOTAL - 729.14 SQ.F.T.



8/11/2020

UNIT



List of unit numbers with this unit plan

VIEWS

Golf Course, Araratia, Creek
B204

Golf Course, Creek
B204, B4204

Disclaimer: 1. All dimensions are in metric, measured to wall finishes. 2. All materials, dimensions & drawings are approximate. 3. Information is subject to change without notice, at developer's absolute discretion. 4. Actual area may vary from the stated area. 5. Drawing are not to scale. 6. All images used are for illustrative purposes only and do not represent the actual site, features, specifications, fittings and/or settings. 7. The developer reserves the right to make necessary/alterations, at its absolute discretion, without any liability whatsoever.

1.5 BEDROOM APARTMENT

TYPE F (with store room + yard)

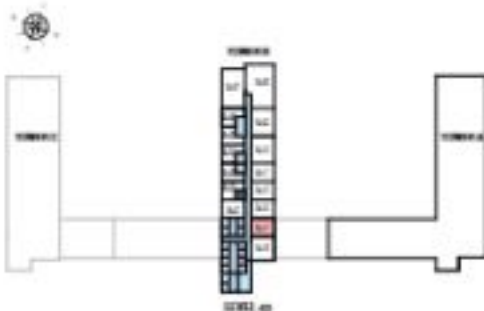
TOTAL SALEABLE AREA

SUITE - 618.77 SQ.FT.

YARD - 110.37 SQ.FT.

TOTAL - 729.14 SQ.FT.

 UNIT



List of unit numbers with this unit plan:

VEWS

Golf Course, Arambito, Creek
B204

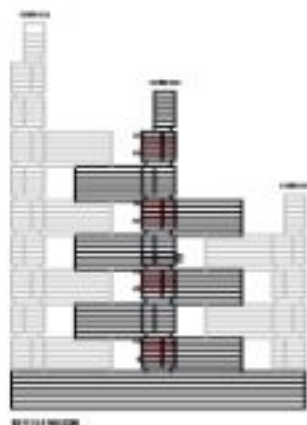
Golf Course, Creek
B204, B404

Disclaimer: 1. All dimensions are in metric, measured to wall finishes. 2. All materials, dimensions & drawings are approximate. 3. Information is subject to change without notice, at developer's absolute discretion. 4. Actual area may vary from the stated area. 5. Drawing are not to scale. 6. All images used are for illustrative purposes only and do not represent the actual site, features, specifications, fittings and/or finishes. 7. The developer reserves the right to make necessary/ alterations, at its absolute discretion, without any liability whatsoever.

2 BEDROOM APARTMENT

TYPE C (with maid room + balcony)

TOTAL SALEABLE AREA
SUITE - 1,330.77 SQ.F.T.
BALCONY - 208.47 SQ.F.T.
TOTAL - 1,458.04 SQ.F.T.



8/11/17/01/02

UNIT



List of unit numbers with this unit plan

VIEWS

Downtown, Ras Al Khaym, Golf Course, Ammanah, Creek, Water Body
8807, 8907, 9007, 9107, 92007, 9307, 9407, 9507, 9607

Downtown, Ras Al Khaym, Golf Course, Water Body, Creek
9207, 9307, 3407, 9507

Downtown, Ras Al Khaym, Golf Course, Creek
9407, 9507, 9607

Disclaimer: 1. All dimensions are in metric, measured to wall finishes. 2. All materials, dimensions & drawings are approximate. 3. Information is subject to change without notice, at developer's absolute discretion. 4. Actual area may vary from the stated area. 5. Drawing are not to scale. 6. All images used are for illustrative purposes only and do not represent the actual site, fixtures, specifications, fittings and/or fittings. 7. The developer reserves the right to make necessary alterations, at its absolute discretion, without any liability whatsoever.

2 BEDROOM APARTMENT

TYPE C (with maid room + balcony)

TOTAL SALEABLE AREA

SUITE - 1,531.77 SQ.F.T.

BALCONY - 268.47 SQ.F.T.

TOTAL - 1,458.64 SQ.F.T.

UNIT



List of unit numbers with this unit plan

VIEWS

Downtown, Ras Al Khaym, Golf Course, Ammanah, Creek, Water Body
8807, 8907, 9007, 9107, 92007, 92907, 93707, 94707

Downtown, Ras Al Khaym, Golf Course, Water Body, Creek
92707, 93307, 3407, 92507

Downtown, Ras Al Khaym, Golf Course, Creek
94907, 94507, 94607

Disclaimer: 1. All dimensions are in metric, measured to wall finishes. 2. All materials, dimensions & drawings are approximate. 3. Information is subject to change without notice, at developer's absolute discretion. 4. Actual area may vary from the stated area. 5. Drawing are not to scale. 6. All images used are for illustrative purposes only and do not represent the actual site, fixtures, specifications, fittings and/or finishes. 7. The developer reserves the right to make necessary alterations, at its absolute discretion, without any liability whatsoever.

2 BEDROOM APARTMENT

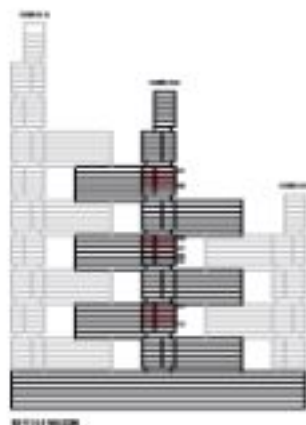
TYPE C (with maid room + balcony) VARIANT 1

TOTAL SALEABLE AREA

SUITE - 1,303.77 SQ.FT.

BALCONY - 269.47 SQ.FT.

TOTAL - 1,458.04 SQ.FT.



01/11/2020

UNIT



List of unit numbers with this unit plan:

VIEWS

Downtown, Max At Khor, Golf Course, Amman, Dead
01400, 01500, 01600, 01700

Downtown, Max At Khor, Golf Course, Dead
01700, 01800, 01900, 02000, 02100, 04000, 04100

Disclaimer: 1. All dimensions are in metric, measured to wall finishes. 2. All materials, dimensions & drawings are approximate. 3. Information is subject to change without notice, at developer's absolute discretion. 4. Actual area may vary from the stated area. 5. Drawing are not to scale. 6. All images used are for illustrative purposes only and do not represent the actual site, features, specifications, fittings and/or settings. 7. The developer reserves the right to make necessary alterations, at its absolute discretion, without any liability whatsoever.

2 BEDROOM APARTMENT

TYPE C (with maid room + balcony) VARIANT 1

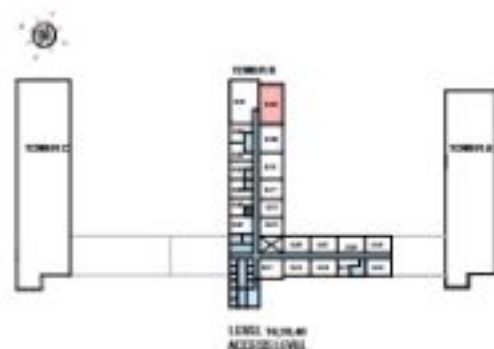
TOTAL SALEABLE AREA

SUITE - 1,530.77 SQ.FT.

BALCONY - 203.47 SQ.FT.

TOTAL - 1,458.04 SQ.FT.

 UNIT



List of unit numbers with this unit plan:

VIEWS

Downtown, Max Atkies, Golf Course, Amerties, Creek
B403, B203, B303, B103

Downtown, Max Atkies, Golf Course, Creek
B703, B2903, B2903, B3903, B4003, B4103

Disclaimer: 1. All dimensions are in metric, measured to wall finishes. 2. All materials, dimensions & drawings are approximate. 3. Information is subject to change without notice, at developer's absolute discretion. 4. Actual area may vary from the stated area. 5. Drawing are not to scale. 6. All images used are for illustrative purposes only and do not represent the actual site, features, specifications, fittings and/or finishes. 7. The developer reserves the right to make necessary alterations, at its absolute discretion, without any liability whatsoever.

2 BEDROOM APARTMENT
TYPE D (with powder room + balcony)

TOTAL SALEABLE AREA
 SUITE - 968.11 SQ.F.T.
 BALCONY - 49.13 SQ.F.T.
TOTAL - 1,016.24 SQ.F.T.



8111/8128

UNIT



List of unit numbers with this unit plan

VIEWS

Golf Course, Americas, Creek
 8809, 8909, 8909

Americas, Creek
 8810, 8940, 8910

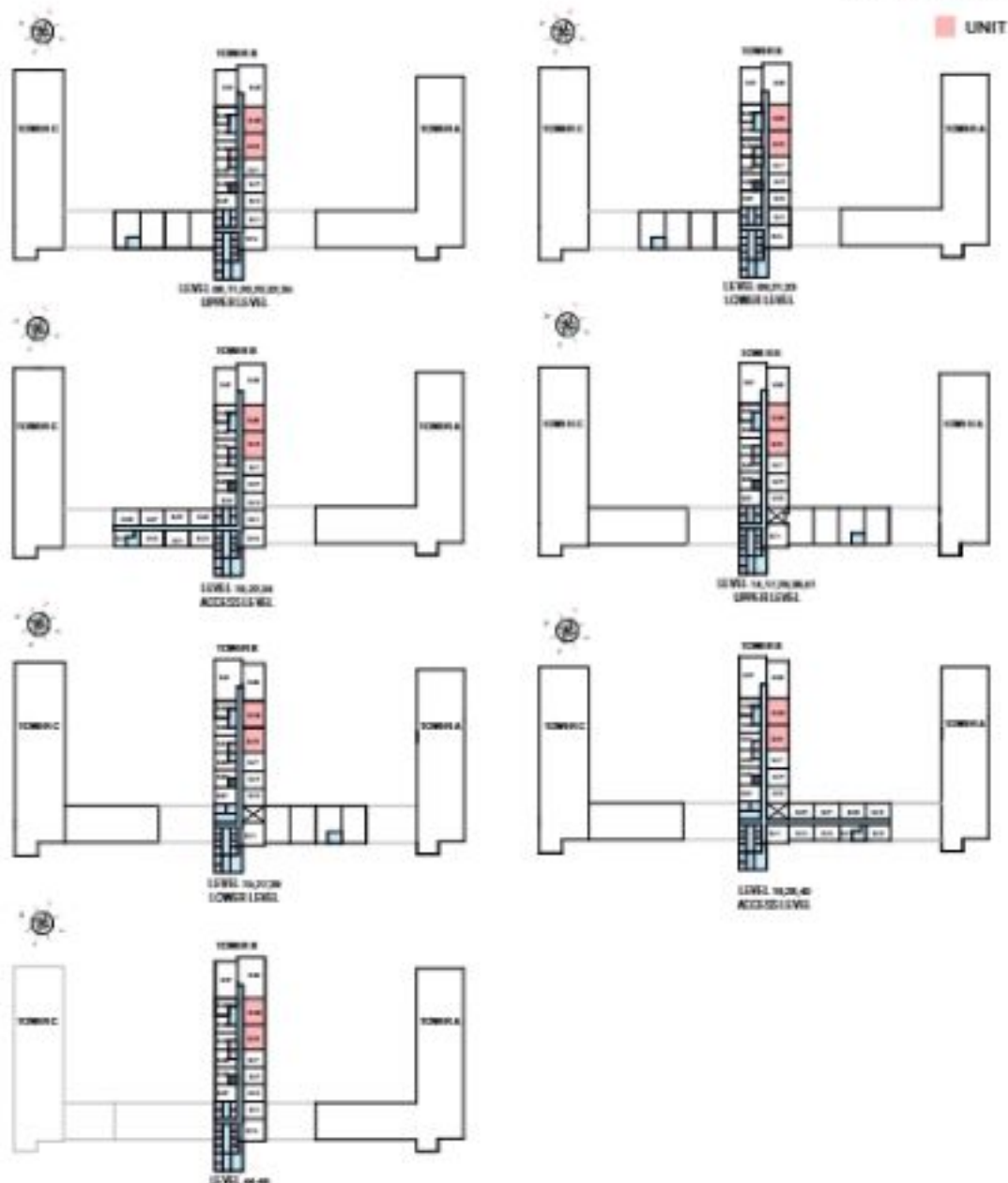
Golf Course, Americas, Creek
 8108, 8110, 81408, 81410, 81508, 81510, 81608, 81610, 81708, 81710, 81808, 82010, 82108, 82110, 82208, 82210, 82308, 82310

Golf Course, Creek
 82708, 82710, 82808, 82810, 82908, 82910, 83008, 83010, 83108, 83110, 83208, 83210, 83308, 83310, 83408, 83410, 83508, 83510, 83608, 83610, 83708, 83710, 83808, 83810, 83908, 83910, 84008, 84010, 84108, 84110, 84208, 84410, 84508, 84510, 84608, 84610

Disclaimer: 1. All dimensions are in metric, measured to wall finishes. 2. All materials, dimensions & drawings are approximate. 3. Information is subject to change without notice, at developer's absolute discretion. 4. Actual area may vary from the stated area. 5. Drawing are not to scale. 6. All images used are for illustrative purposes only and do not represent the actual site, features, specifications, fittings and/or fittings. 7. The developer reserves the right to make necessary alterations, at its absolute discretion, without any liability whatsoever.

2 BEDROOM APARTMENT
TYPE D (with powder room + balcony)

TOTAL SALEABLE AREA
 SUITE - 968.11 SQ.FT.
 BALCONY - 49.13 SQ.FT.
TOTAL - 1,016.24 SQ.FT.



List of unit numbers with this unit plan

VIEWS

Golf Course, Americas, Creek
 B209, B208, B205

Golf Course, Americas, Creek
 B108, B110, B140, B141, B106, B114, B109, B112, B107, B111, B105, B201, B204, B210, B206, B212, B203, B211

Americas, Creek
 B310, B240, B101

Golf Course, Creek
 B2709, B2710, B2909, B2910, B2908, B2911, B2708, B2711, B2309, B2310, B3409, B3410, B2509, B2510, B3309, B3310, B3308, B3311, B4009, B4010, B4109, B4110, B4409, B4410, B4509, B4510, B4609, B4610

Disclaimer: 1. All dimensions are in metric, measured to wall finishes. 2. All materials, dimensions & drawings are approximate. 3. Information is subject to change without notice, at developer's absolute discretion. 4. Actual area may vary from the stated area. 5. Drawing are not to scale. 6. All images used are for illustrative purposes only and do not represent the actual site, features, specifications, fittings and/or fixtures. 7. The developer reserves the right to make necessary alterations, at its absolute discretion, without any liability whatsoever.

2 BEDROOM APARTMENT

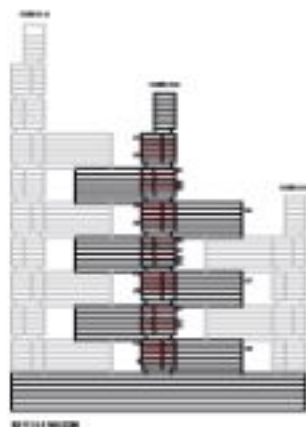
TYPE F (with maid room + balcony)

TOTAL SALEABLE AREA

SUITE - 1,024.28 SQ.F.T.

BALCONY - 48.76 SQ.F.T.

TOTAL - 1,073.04 SQ.F.T.



01/11/2020

UNIT



List of unit numbers with this unit plan

VIEWS

Armenian, Creek

B205, B210, B105, B115

Golf Course, Armenian, Creek

B205, B210, B215, B225

Golf Course, Creek

B225, B230, B345, B355

Golf Course, Creek

B445, B455, B465

Disclaimer: 1. All dimensions are in metric, measured to wall finishes. 2. All materials, dimensions & drawings are approximate. 3. Information is subject to change without notice, at developer's absolute discretion. 4. Actual area may vary from the stated area. 5. Drawing are not to scale. 6. All images used are for illustrative purposes only and do not represent the actual site, features, specifications, fittings and/or materials. 7. The developer may use the right to make necessary/alterations, at its absolute discretion, without any liability whatsoever.

2 BEDROOM APARTMENT

TYPE F (with maid room + balcony)

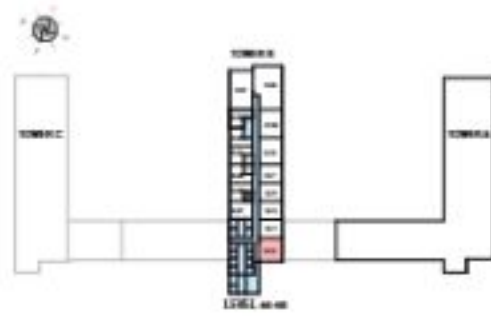
TOTAL SALEABLE AREA

SUITE - 1,024.28 SQ.FT.

HAJ CONY - 48.76 SQ.FT.

TOTAL - 1,073.04 SQ.FT.

UNIT



List of unit numbers with this unit plan

VIEWS

Amertitas, Creek

B015, B030, B1015, B115

Golf Course, Amertitas, Creek

B2015, B2105, B2215, B2315

Golf Course, Creek

B3215, B3315, B3415, B3515

Golf Course, Creek

B445, B455, B465

Disclaimer: 1. All dimensions are in metric, measured to wall finishes. 2. All materials, dimensions & drawings are approximate. 3. Information is subject to change without notice, at developer's absolute discretion. 4. Actual area may vary from the stated area. 5. Drawing are not to scale. 6. All images used are for illustrative purposes only and do not represent the actual site, features, specifications, fittings and/or materials. 7. The developer reserve the right to make necessary/alterations, at its absolute discretion, without any liability whatsoever.

2 BEDROOM APARTMENT

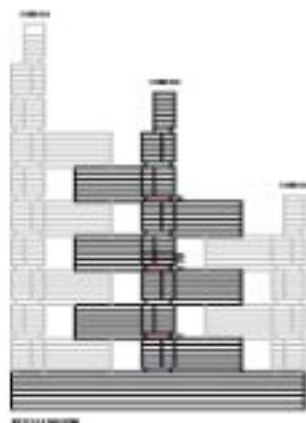
TYPE J (with maid room + yard)

TOTAL SALEABLE AREA

SUITE - 1,200.78 SQ.F.T.

YARD - 494.49 SQ.F.T.

TOTAL - 1,695.27 SQ.F.T.



8271190108

UNIT



List of unit numbers with this unit plan

VIEWS

Downtown, The Al Khay, Golf Course, Amenity, Creek, Water Body
8207, 82437

Downtown, The Al Khay, Golf Course, Water Body, Creek
82007

Disclaimer: 1. All dimensions are in metric, measured to wall finishes. 2. All materials, dimensions & drawings are approximate. 3. Information is subject to change without notice, at developer's absolute discretion. 4. Actual area may vary from the stated area. 5. Drawing are not to scale. 6. All images used are for illustration purpose only and do not represent the actual site, features, specifications, fittings and/or finishes. 7. The developer reserves the right to make necessary alterations, at its absolute discretion, without any liability whatsoever.

2 BEDROOM APARTMENT

TYPE J (with maid room + yard)

TOTAL SALEABLE AREA

SUITE - 1,200.78 SQ.F.T.

YARD - 494.49 SQ.F.T.

TOTAL - 1,695.27 SQ.F.T.

 UNIT



List of unit numbers with this unit plan

VIEWS

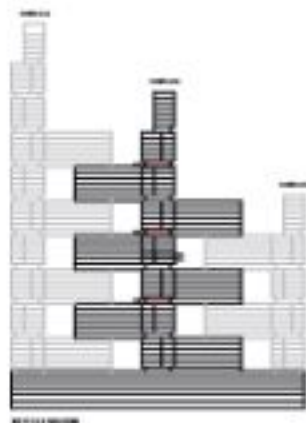
Downview, Sea Al Khay, Golf Course, Amenity, Creek, Water Body
B207, B2407

Downview, Sea Al Khay, Golf Course, Water Body, Creek
B207

Disclaimer: 1. All dimensions are in metric, measured to wall finishes. 2. All materials, dimensions & drawings are approximate. 3. Information is subject to change without notice, at developer's absolute discretion. 4. Actual area may vary from the stated area. 5. Drawing are not to scale. 6. All images used are for illustration purpose only and do not represent the actual site, features, specifications, fittings and/or finishes. 7. The developer reserve the right to make necessary/ alterations, at its absolute discretion, without any liability whatsoever.

2 BEDROOM APARTMENT
TYPE J (with maid room + yard) VARIANT 1

TOTAL SALEABLE AREA
 SUITE - 1,200.78 SQ.F.T.
 YARD - 404.49 SQ.F.T.
 TOTAL - 1,605.27 SQ.F.T.



List of unit numbers with this unit plan

VIEWS

Downtown, Ras Al Khaym, Golf Course, Amenities, Creek, Water Body
 02000, 02000

Downtown, Ras Al Khaym, Golf Course, Water Body, Creek
 02000

Downtown, Ras Al Khaym, Golf Course, Creek
 04000

Disclaimer: 1. All dimensions are in metric, measured to wall finishes. 2. All materials, dimensions & drawings are approximate. 3. Information is subject to change without notice, at developer's absolute discretion. 4. Actual area may vary from the stated area. 5. Drawing are not to scale. 6. All images used are for illustration purpose only and do not represent the actual site, location, specifications, fittings used for ceilings. 7. This developer reserve the right to make necessary alterations, at its absolute discretion, without any liability whatsoever.

2 BEDROOM APARTMENT
TYPE J (with maid room + yard) VARIANT 1

TOTAL SALEABLE AREA
 SUITE - 1,200.78 SQ.F.T.
 YARD - 494.49 SQ.F.T.
 TOTAL - 1,695.27 SQ.F.T.

 UNIT



List of unit numbers with this unit plan

VIEWS

Downtown, Ras Al Khaym, Golf Course, Amenities, Creek, Water Body
 0000, 11000

Downtown, Ras Al Khaym, Golf Course, Water Body, Creek
 02000

Downtown, Ras Al Khaym, Golf Course, Creek
 04000

Disclaimer: 1. All dimensions are in metric, measured to wall finishes. 2. All materials, dimensions & drawings are approximate. 3. Information is subject to change without notice, at developer's absolute discretion. 4. Actual area may vary from the stated area. 5. Drawing are not to scale. 6. All images used are for illustrative purpose only and do not represent the actual use, features, specifications, fittings used or materials. 7. This developer reserves the right to make necessary alterations, at its absolute discretion, without any liability whatsoever.

2 BEDROOM APARTMENT

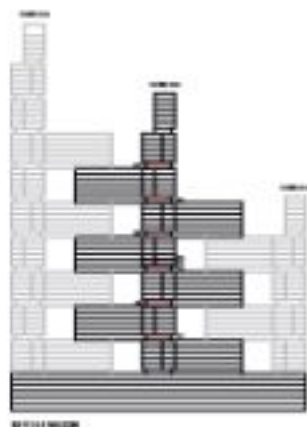
TYPE L (with powder room + yard)

TOTAL SALEABLE AREA

SUITE - 957.96 SQ.FT.

YARD - 154.89 SQ.FT.

TOTAL - 1112.85 SQ.FT.



8/11/2020

UNIT



List of unit numbers with this unit plan:

VIEWS

Golf Course, Amenities, Creek
82209, 82740, 83008, 83610, 82409, 82480

Golf Course, Creek
82008, 82010, 82808, 82610, 84708, 84710

Disclaimer: 1. All dimensions are in metric, measured to wall finishes. 2. All materials, dimensions & drawings are approximate. 3. Information is subject to change without notice, at developer's absolute discretion. 4. Actual area may vary from the stated area. 5. Drawing are not to scale. 6. All images used are for illustrative purposes only and do not represent the actual site, features, specifications, fittings and/or finishes. 7. The developer reserves the right to make necessary/alterations, at its absolute discretion, without any liability whatsoever.

2 BEDROOM APARTMENT

TYPE L (with powder room + yard)

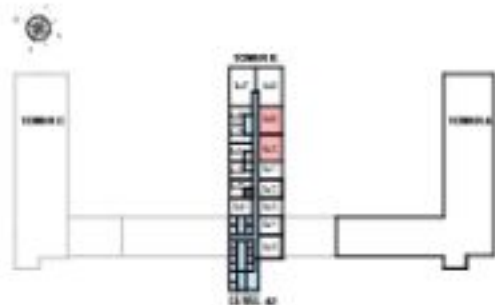
TOTAL SALEABLE AREA

SUITE - 957.96 SQ.FT.

YARD - 854.89 SQ.FT.

TOTAL - 1,812.85 SQ.FT.

 UNIT



List of unit numbers with this unit plan:

VEWS

Golf Course, American, Creek

82209, 82710, 83009, 83510, 82409, 82410

Golf Course, Creek

82009, 82010, 82809, 82610, 84709, 84710

Disclaimer: 1. All dimensions are in metric, measured to wall finishes. 2. All materials, dimensions & drawings are approximate. 3. Information is subject to change without notice, at developer's absolute discretion. 4. Actual area may vary from the stated area. 5. Drawing are not to scale. 6. All images used are for illustrative purposes only and do not represent the actual site, features, specifications, fittings and/or finishes. 7. The developer reserves the right to make necessary alterations, at its absolute discretion, without any liability whatsoever.

2 BEDROOM APARTMENT

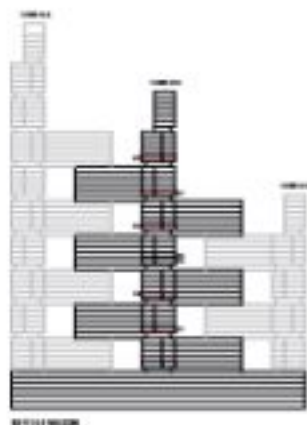
TYPE S (with powder room + yard)

TOTAL SALEABLE AREA

SUITE - 908.11 SQ.F.T.

YARD - 145.45 SQ.F.T.

TOTAL - 1,053.56 SQ.F.T.



8/11/2020

UNIT



List of unit numbers with this unit plan:

VEWS

Golf Course, Amenities, Creek
B2309, B2310, B3006, B3010

Golf Course, Creek
B2309, B2310, B2706, B2710, B4306, B4310

Disclaimer: 1. All dimensions are in metric, measured to wall finishes. 2. All materials, dimensions & drawings are approximate. 3. Information is subject to change without notice, at developer's absolute discretion. 4. Actual area may vary from the stated area. 5. Drawing are not to scale. 6. All images used are for illustrative purposes only and do not represent the actual site, features, specifications, fittings and/or settings. 7. The developer reserves the right to make necessary alterations, at its absolute discretion, without any liability whatsoever.

3 BEDROOM APARTMENT

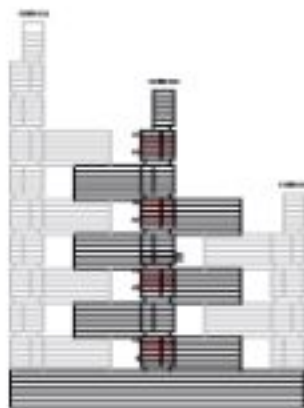
TYPE B (with maid room + balcony)

TOTAL SALEABLE AREA

SUITE - 1,515.13 SQ.FT.

BALCONY - 125.13 SQ.FT.

TOTAL - 1,640.26 SQ.FT.



01/11/2020

 UNIT



List of unit numbers with this unit plan

VIEWS

Downtown, Sea Al Khair, Golf Course, Amalties, Water Body, Creek
04401, 04402, 04403, 04404, 04405, 04406, 04407, 04408, 04409

Downtown, Sea Al Khair, Golf Course, Creek
04408, 04409, 04410

Downtown, Sea Al Khair, Golf Course, Water Body, Creek
02306, 02307, 02308, 02309

Disclaimer: 1. All dimensions are in metric, measured to wall finishes. 2. All materials, dimensions & drawings are approximate. 3. Information is subject to change without notice, at developer's absolute discretion. 4. Actual area may vary from the stated area. 5. Drawing are not to scale. 6. All images used are for illustrative purposes only and do not represent the actual site, fixtures, specifications, fittings and/or fittings. 7. The developer reserves the right to make necessary alterations, at its absolute discretion, without any liability whatsoever.

3 BEDROOM APARTMENT

TYPE B (with maid room + balcony)

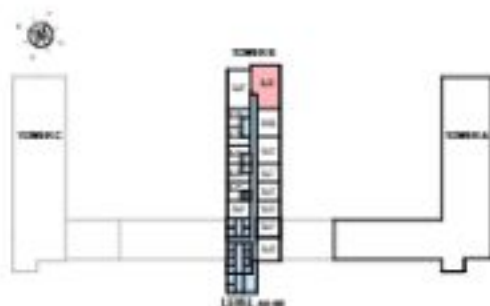
TOTAL SALEABLE AREA

SUITE - 1,515.13 SQ.FT.

BALCONY - 125.13 SQ.FT.

TOTAL - 1,640.26 SQ.FT.

 UNIT



List of unit numbers with this unit plan

VEWS

Downtown, Sea Al Khair, Golf Course, Amenities, Water Body, Creek
B804, B904, B1004, B1104, B1204, B1304, B1404, B1504

Downtown, Sea Al Khair, Golf Course, Creek
B4404, B4504, B4604

Downtown, Sea Al Khair, Golf Course, Water Body, Creek
B2704, B2804, B2904, B3004

Disclaimer: 1. All dimensions are in metric, measured to wall finishes. 2. All materials, dimensions & drawings are approximate. 3. Information is subject to change without notice, at developer's absolute discretion. 4. Actual area may vary from the stated area. 5. Drawing are not to scale. 6. All images used are for illustrative purposes only and do not represent the actual site, fixtures, specifications, fittings and/or finishes. 7. The developer reserves the right to make necessary alterations, at its absolute discretion, without any liability whatsoever.

3 BEDROOM APARTMENT

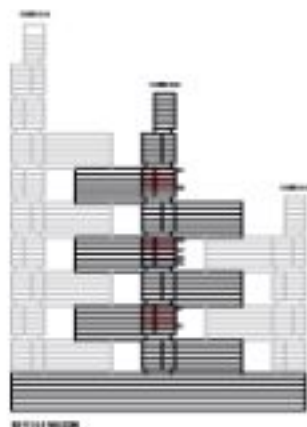
TYPE B (with maid room + balcony) VARIANT 1

TOTAL SALEABLE AREA

SUITE - 1,515.13 SQ.FT.

BALCONY - 125.13 SQ.FT.

TOTAL - 1,640.26 SQ.FT.



02/11/2020

UNIT



List of unit numbers with this unit plan

VIEWS

Downtown, Ras Al Khay, Golf Course, Amalties, Creek, Water Body
B3407, B3507, B3607, B3707

Downtown, Ras Al Khay, Golf Course, Creek, Water body
B3707, B3907, B3907

Downtown, Ras Al Khay, Golf Course, Creek
B3807, B3907, B4007, B4107

Disclaimer: 1. All dimensions are in metric, measured to wall finishes. 2. All materials, dimensions & drawings are approximate. 3. Information is subject to change without notice, at developer's absolute discretion. 4. Actual area may vary from the stated area. 5. Drawing are not to scale. 6. All images used are for illustrative purposes only and do not represent the actual site, fixtures, specifications, fittings and/or fittings. 7. The developer reserves the right to make necessary/alterations, at its absolute discretion, without any liability whatsoever.

3 BEDROOM APARTMENT

TYPE B (with maid room + balcony) VARIANT 1

TOTAL SALEABLE AREA

SUITE - 1,515.13 SQ.FT.

BALCONY - 125.13 SQ.FT.

TOTAL - 1,640.26 SQ.FT.

UNIT



List of unit numbers with this unit plan

VIEWS

Downtown, Sea Al Khay, Golf Course, Amman, Creek, Water Body
B3407, B3507, B3607, B3707

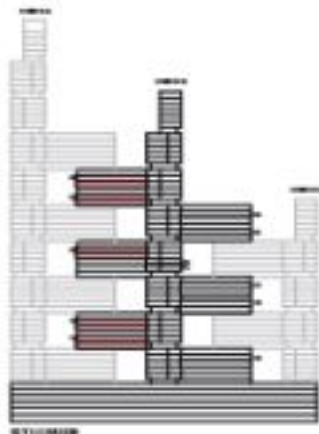
Downtown, Sea Al Khay, Golf Course, Creek, Water body
B3707, B3807, B3907

Downtown, Sea Al Khay, Golf Course, Creek
B3807, B3907, B4007, B4107

Disclaimer: 1. All dimensions are in metric, measured to wall finishes. 2. All materials, dimensions & drawings are approximate. 3. Information is subject to change without notice, at developer's absolute discretion. 4. Actual area may vary from the stated area. 5. Drawing are not to scale. 6. All images used are for illustrative purposes only and do not represent the actual site, fixtures, specifications, fittings and/or ratings. 7. The developer reserve the right to make necessary/alterations, at its absolute discretion, without any liability whatsoever.

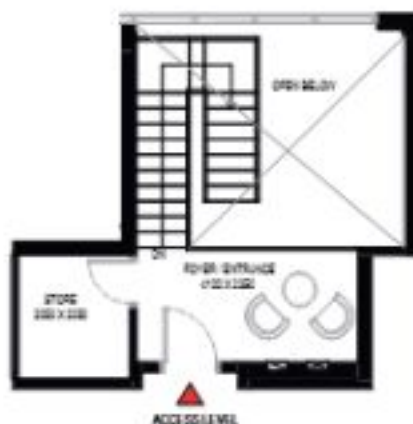
2 BEDROOM DUPLEX APARTMENT
TYPE A (with store room and maid room + balcony)

TOTAL SALEABLE AREA
 SUITE - 1,704.76 SQ.FT.
 BALCONY - 179.96 SQ.FT.
TOTAL - 1,884.72 SQ.FT.



011104028

UNIT



LOWER LEVEL

List of unit numbers with this unit plan

VEWS

Golf Course, Amenities, Creek
 B2017, B2017

Sea AirView, Golf Course
 B2017, B2017, B4017

Disclaimer: 1. All dimensions are in metric, measured to wall finishes. 2. All materials, dimensions & drawings are approximate. 3. Information is subject to change without notice, at developer's absolute discretion. 4. Actual area may vary from the stated area. 5. Drawing are not to scale. 6. All images used are for illustration purposes only and do not represent the actual site, fixtures, specifications, fittings and/or fittings. 7. The developer reserve the right to make necessary/alterations, at its absolute discretion, without any liability whatsoever.

2 BEDROOM DUPLEX APARTMENT
TYPE A (with store room and maid room + balcony)

TOTAL SALEABLE AREA
SUITE - 1,704.76 SQ.FT.
BALCONY - 179.96 SQ.FT.
TOTAL - 1,884.72 SQ.FT.

 UNIT



Lot of unit numbers with this unit plan

VEWS

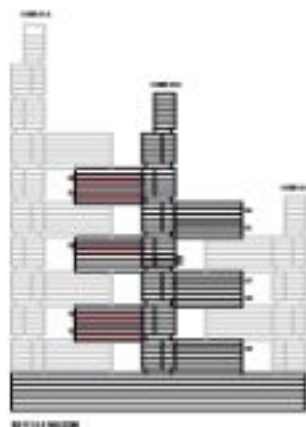
Golf Course, Amenities, Creek
B2317, B2317

Sea AirView, Golf Course
B2317, B2317, B2317

Disclaimer: 1. All dimensions are in metric, measured to wall finishes. 2. All materials, dimensions & drawings are approximate. 3. Information is subject to change without notice, at developer's absolute discretion. 4. Actual area may vary from the stated area. 5. Drawing are not to scale. 6. All images used are for illustrative purposes only and do not represent the actual site, features, specifications, fittings and/or fittings. 7. The developer reserve the right to make necessary/ alterations, at its absolute discretion, without any liability whatsoever.

4 BEDROOM DUPLEX APARTMENT
TYPE A (with maid room and powder room + balcony)

TOTAL SALEABLE AREA
 SUITE - 2,176.53 SQ.FT.
 BALCONY - 176.25 SQ.FT.
TOTAL - 2,352.78 SQ.FT.



01/11/2020

UNIT



LOWER LEVEL

List of unit numbers with this unit plan

VEWS

Golf Course, American, Creek
 0206, 01206, 0306, 0406

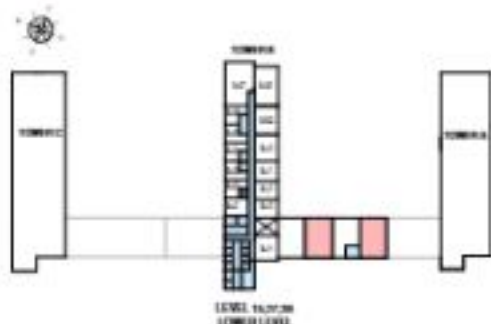
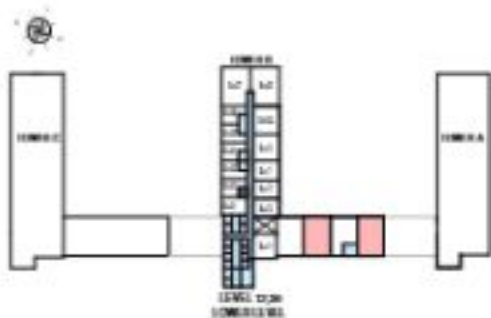
Roe At Her, Golf Course
 0206, 0206A, 0206B, 0206C, 0406, 0406A

Disclaimer: 1. All dimensions are in metric, measured to wall finishes. 2. All materials, dimensions & drawings are approximate. 3. Information is subject to change without notice, at developer's absolute discretion. 4. Actual area may vary from the stated area. 5. Drawing are not to scale. 6. All images used are for illustrative purposes only and do not represent the actual site, features, specifications, fittings and/or materials. 7. The developer reserve the right to make necessary/alterations, at its absolute discretion, without any liability whatsoever.

4 BEDROOM DUPLEX APARTMENT
TYPE A (with maid room and powder room + balcony)

TOTAL SALEABLE AREA
 SUITE - 2,176.53 SQ.F.T.
 BALCONY - 176.25 SQ.F.T.
 TOTAL - 2,352.78 SQ.F.T.

 UNIT



List of unit numbers with this unit plan

VEWS

Golf Course, American, Creek
 0206, 01206, 0306, 0406

Riverview, Golf Course
 0206, 0206A, 0206B, 0206C, 0406, 0406A

Disclaimer: 1. All dimensions are in metric, measured to wall finishes. 2. All materials, dimensions & drawings are approximate. 3. Information is subject to change without notice, at developer's absolute discretion. 4. Actual area may vary from the stated area. 5. Drawing are not to scale. 6. All images used are for illustrative purposes only and do not represent the actual site, features, specifications, fittings and/or finishes. 7. The developer reserve the right to make necessary/alterations, at its absolute discretion, without any liability whatsoever.

4 BEDROOM DUPLEX APARTMENT

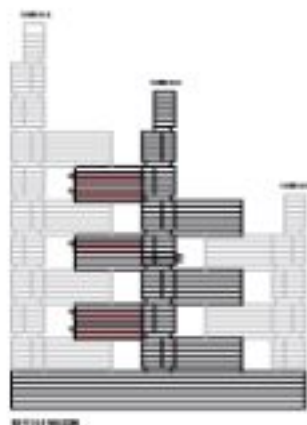
TYPE A1 (with maid room and powder room + balcony) VARIANT 1

TOTAL SALEABLE AREA

SUITE - 2,240.98 SQ.FT.

BALCONY - 859.85 SQ.FT.

TOTAL - 2,410.83 SQ.FT.



8111/8128

UNIT



List of unit numbers with this unit plan

VEWS

Golf Course, Amenities, Creek
8120, 8125

Road A/Road, Golf Course
8125, 8130, 8135

Disclaimer: 1. All dimensions are in metric, measured to wall finishes. 2. All materials, dimensions & drawings are approximate. 3. Information is subject to change without notice, at developer's absolute discretion. 4. Actual area may vary from the stated area. 5. Drawing are not to scale. 6. All images used are for illustrative purposes only and do not represent the actual site, features, specifications, fittings and/or finishes. 7. The developer reserve the right to make necessary/alter others, at its absolute discretion, without any liability whatsoever.

4 BEDROOM DUPLEX APARTMENT

TYPE A1 (with maid room and powder room + balcony) VARIANT 1

TOTAL SALEABLE AREA

SUITE - 2,240.98 SQ.FT.

BAL CONY - 859.85 SQ.FT.

TOTAL - 2,410.83 SQ.FT.

 UNIT



List of unit numbers with this unit plan

VEWS

Golf Course, Amenities, Creek
8200, 8100

Roe Aikhe, Golf Course
8200, 8270, 8400

Disclaimer: 1. All dimensions are in metric, measured to wall finishes. 2. All materials, dimensions & drawings are approximate. 3. Information is subject to change without notice, at developer's absolute discretion. 4. Actual area may vary from the stated area. 5. Drawing are not to scale. 6. All images used are for illustrative purposes only and do not represent the actual site, features, specifications, fittings and/or finishes. 7. The developer reserve the right to make necessary/alterations, at its absolute discretion, without any liability whatsoever.



SOBHA ONE

SOBHA
REALTY